



# SZABO SCANDIC

Part of Europa Biosite

## Produktinformation



Forschungsprodukte & Biochemikalien



Zellkultur & Verbrauchsmaterial



Diagnostik & molekulare Diagnostik



Laborgeräte & Service

Weitere Information auf den folgenden Seiten!  
See the following pages for more information!



### Lieferung & Zahlungsart

siehe unsere [Liefer- und Versandbedingungen](#)

### Zuschläge

- Mindermengenzuschlag
- Trockeneiszuschlag
- Gefahrgutzuschlag
- Expressversand

### SZABO-SCANDIC HandelsgmbH

Quellenstraße 110, A-1100 Wien

T. +43(0)1 489 3961-0

F. +43(0)1 489 3961-7

[mail@szabo-scandic.com](mailto:mail@szabo-scandic.com)

[www.szabo-scandic.com](http://www.szabo-scandic.com)

[linkedin.com/company/szaboscandic](https://www.linkedin.com/company/szaboscandic) 



## CFHR1 monoclonal antibody (M01), clone 4D7

Catalog # : H00003078-M01

規格 : [ 100 ug ]

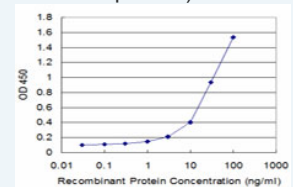
[List All](#)


### Specification

<b>Product Description:</b>	Mouse monoclonal antibody raised against a full-length recombinant CFHR1.
<b>Immunogen:</b>	CFHR1 (AAH16755.1, 19 a.a. ~ 330 a.a) full-length recombinant protein with GST tag. MW of the GST tag alone is 26 KDa.
<b>Sequence:</b>	EATFCDFPKINHGILYDEEKYKPFQVPTGEVFYYSCEYNFVSPSKSFWT RITCTEEGWSPTPKCLRLCFFPFVENGHSESSGQTHLEGDTVQIICNTGY RLQNNENNISCVERGWSTPPKCRSTDTSCVNPPTVQNAHILSRQMSKYP SGERVRYECSRPEYEMFGDEEVMCLNGNWTEPPQCKDSTGKCGPPPI DNGDITSFPLSVYAPASSVEYQCQNLYQLEGNKRITCRNGQWSEPPKCL HPCVISREIMENYNIALRWTAKQKLYLRTGESAEFVCKRGYRLSSRSHTL RTTCWDGKLEYPTCAKR
<b>Host:</b>	Mouse
<b>Reactivity:</b>	Human
<b>Isotype:</b>	IgG2b Kappa
<b>Quality Control Testing:</b>	Antibody Reactive Against Recombinant Protein.
<b>Storage Buffer:</b>	In 1x PBS, pH 7.4
<b>Storage Instruction:</b>	Store at -20°C or lower. Aliquot to avoid repeated freezing and thawing.
<b>MSDS:</b>	 <a href="#">Download</a>
<b>Datasheet:</b>	 <a href="#">Download</a>

### Application Image

Sandwich ELISA (Recombinant protein)

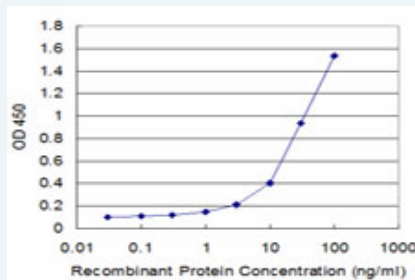


 [enlarge](#)

ELISA

### Applications

Sandwich ELISA (Recombinant protein)



Detection limit for recombinant GST tagged CFHR1 is approximately 1ng/ml as a capture antibody.

 [Protocol Download](#)

ELISA

[Gene Information](#)

Entrez GeneID: [3078](#)

GeneBank [BC016755](#)  
Accession#:

Protein [AAH16755.1](#)  
Accession#:

Gene Name: CFHR1

Gene Alias: CFHL,CFHL1,CFHL1P,CFHR1P,FHR1,H36-1,H36-2,HFL1,HFL2,MGC104329

Gene Description: complement factor H-related 1

Omim ID: [134371](#)

Gene Ontology: [Hyperlink](#)

Other Designations: H factor (complement)-like 1,H factor (complement)-like 2,OTTHUMP00000034408,complement factor H-related 1 pseudogene

#### Related Disease

[Cardiovascular Diseases](#) [Diabetes Mellitus, Type 2](#) [Edema](#)  
[Genetic Predisposition to Disease](#) [Hemolytic-Uremic Syndrome](#) [Lymphoma, Non-Hodgkin](#)  
[Macular Degeneration](#)

[服務條款](#) | [隱私權政策](#) | [著作及商標](#) | [網站地圖](#)

©2016 亞諾法生技股份有限公司 Abnova Corporation. 版權所有.