



# SZABO SCANDIC

Part of Europa Biosite

## Produktinformation



Forschungsprodukte & Biochemikalien



Zellkultur & Verbrauchsmaterial



Diagnostik & molekulare Diagnostik



Laborgeräte & Service

Weitere Information auf den folgenden Seiten!  
See the following pages for more information!



### Lieferung & Zahlungsart

siehe unsere [Liefer- und Versandbedingungen](#)

### Zuschläge

- Mindermengenzuschlag
- Trockeneiszuschlag
- Gefahrgutzuschlag
- Expressversand

### SZABO-SCANDIC HandelsgmbH

Quellenstraße 110, A-1100 Wien

T. +43(0)1 489 3961-0

F. +43(0)1 489 3961-7

[mail@szabo-scandic.com](mailto:mail@szabo-scandic.com)

[www.szabo-scandic.com](http://www.szabo-scandic.com)



[linkedin.com/company/szaboscandic](https://www.linkedin.com/company/szaboscandic) 

**CFHL2 MaxPab mouse polyclonal antibody (B01)** MaxPab®

Catalog # : H00003080-B01

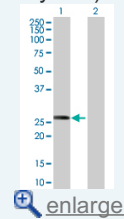
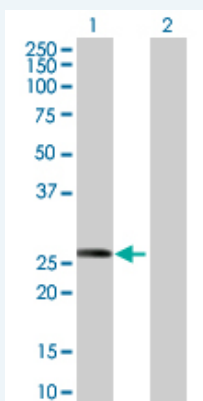
規格 : [ 50 uL ]

[List All](#)
**Specification**

<b>Product Description:</b>	Mouse polyclonal antibody raised against a full-length human CFHL2 protein.
<b>Immunogen:</b>	CFHL2 (AAH22283, 19 a.a. ~ 270 a.a) full-length human protein.
<b>Sequence:</b>	EAMFCDFPKINHILYDEEKYKPFVPTGEVFFYSCEYNFVSPSKSFWT RITCAEEGWSPTPKCLRLCFFPFVENGHSESSGQTHLEGDTVQIICNTGY RLQNNENNISCVERGWSTPPKCRSTISAEKCGPPPIDNGDITSFLLSVYA PGSSVEYQCQNLYQLEGNNQITCRNGQWSEPPKCLDPCVISQEIMEKYNI KLKWTNQKLYSRTGDMEFVCKSGYHPTKSHSFRAMCQNGKLVYPSC EEK
<b>Host:</b>	Mouse
<b>Reactivity:</b>	Human
<b>Quality Control Testing:</b>	Antibody reactive against mammalian transfected lysate.
<b>Storage Buffer:</b>	No additive
<b>Storage Instruction:</b>	Store at -20°C or lower. Aliquot to avoid repeated freezing and thawing.
<b>Note:</b>	For IHC and IF applications, antibody purification with Protein A will be needed prior to use.
<b>MSDS:</b>	 <a href="#">Download</a>
<b>Datasheet:</b>	 <a href="#">Download</a>

**Application Image**

Western Blot (Transfected lysate)


**Applications**
**Western Blot (Transfected lysate)**


Western Blot analysis of CFHR2 expression in transfected 293T cell line ([H00003080-T01](#)) by CFHR2 MaxPab polyclonal antibody.

Lane 1: CFHL2 transfected lysate(29.81 KDa).  
Lane 2: Non-transfected lysate.

### Gene Information

---

**Entrez GeneID:** [3080](#)

**GeneBank  
Accession#:** [BC022283](#)

**Protein  
Accession#:** [AAH22283](#)

**Gene Name:** CFHR2

**Gene Alias:** CFHL2,FHR2,HFL3

**Gene  
Description:** complement factor H-related 2

**Omim ID:** [600889](#)

**Gene Ontology:** [Hyperlink](#)

**Other  
Designations:** H factor (complement)-like 3,OTTHUMP00000034673, factor H-related gene 2

### Related Disease

---

[Genetic Predisposition to Disease Hemolytic-Uremic Syndrome Macular Degeneration](#)