



SZABO SCANDIC

Part of Europa Biosite

Produktinformation



Forschungsprodukte & Biochemikalien



Zellkultur & Verbrauchsmaterial



Diagnostik & molekulare Diagnostik



Laborgeräte & Service

Weitere Information auf den folgenden Seiten!
See the following pages for more information!



Lieferung & Zahlungsart

siehe unsere [Liefer- und Versandbedingungen](#)

Zuschläge

- Mindermengenzuschlag
- Trockeneiszuschlag
- Gefahrgutzuschlag
- Expressversand

SZABO-SCANDIC HandelsgmbH

Quellenstraße 110, A-1100 Wien

T. +43(0)1 489 3961-0

F. +43(0)1 489 3961-7

mail@szabo-scandic.com

www.szabo-scandic.com

[linkedin.com/company/szaboscandic](https://www.linkedin.com/company/szaboscandic) 

NRG1 purified MaxPab rabbit polyclonal antibody (D01P) MaxPab®

Catalog # : H00003084-D01P

規格 : [100 ug]

[List All](#)

Specification

Product Description: Rabbit polyclonal antibody raised against a full-length human NRG1 protein.

Immunogen: NRG1 (NP_039252.1, 1 a.a. ~ 241 a.a) full-length human protein.

Sequence:
 MSERKEGRGKGGKGGKKKERGSGKKPESAAGSQSPALPPQLKEMKSQES
 AAGSKLVLCETSSSEYSSLRFKWFKNGNELNRKNKPQNIQKKPGKSEL
 RINKASLADSGEYMCKVISKLGNDASANITIVESNEITGMPASTEGAYVS
 SESPIRISVSTEGANTSSSTSTTTGTSHLVKCAEKEKTFVNGGECFMV
 KDLSNPSRYLCKCPNEFTGDRCQNYVMASFYSTSTPFLSLPE

Host: Rabbit

Reactivity: Human

Quality Control Testing: Antibody reactive against mammalian transfected lysate.

Storage Buffer: In 1x PBS, pH 7.4

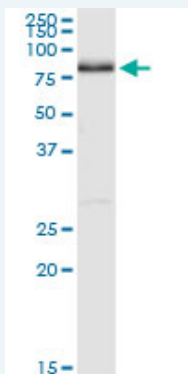
Storage Instruction: Store at -20°C or lower. Aliquot to avoid repeated freezing and thawing.

MSDS:  [Download](#)

Datasheet:  [Download](#)

Applications

Western Blot (Tissue lysate)



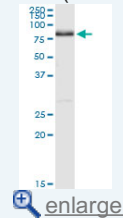
NRG1 MaxPab rabbit polyclonal antibody. Western Blot analysis of NRG1 expression in human placenta.

 [Protocol Download](#)

Western Blot (Transfected lysate)

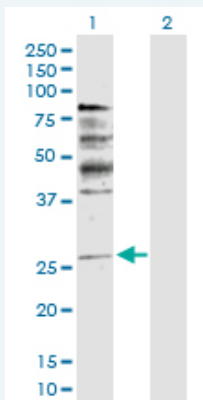
Application Image

Western Blot (Tissue lysate)




Western Blot (Transfected lysate)





Western Blot analysis of NRG1 expression in transfected 293T cell line (H00003084-T03) by NRG1 MaxPab polyclonal antibody.

Lane 1: NRG1 transfected lysate(26.10 KDa).
Lane 2: Non-transfected lysate.

 Protocol Download

Gene Information

Entrez GeneID: [3084](#)

GeneBank Accession#: [NM_013958.1](#)

Protein Accession#: [NP_039252.1](#)

Gene Name: NRG1

Gene Alias: ARIA,GGF,GGF2,HGL,HRG,HRG1,HRGA,NDF,SMDF

Gene Description: neuregulin 1

Omim ID: [142445](#), [603013](#)

Gene Ontology: [Hyperlink](#)

Gene Summary: The protein encoded by this gene was originally identified as a 44-kD glycoprotein that interacts with the NEU/ERBB2 receptor tyrosine kinase to increase its phosphorylation on tyrosine residues. This protein is a signaling protein that mediates cell-cell interactions and plays critical roles in the growth and development of multiple organ systems. It is known that an extraordinary variety of different isoforms are produced from this gene through alternative promoter usage and splicing. These isoforms are tissue-specifically expressed and differ significantly in their structure, and thereby these isoforms are classified into types I, II, III, IV, V and VI. The gene dysregulation has been linked to diseases such as cancer, schizophrenia and bipolar disorder (BPD). [provided by RefSeq]

Other Designations: glial growth factor, heregulin, alpha (45kD, ERBB2 p185-activator), neu differentiation factor, neuregulin 1 isoform HRG-gamma, sensory and motor neuron derived factor

Gene Pathway

[ErbB signaling pathway](#)

Related Disease

[Alzheimer Disease](#) [Alzheimer disease](#) [Amphetamine-Related Disorders](#) [Anoxia](#) [Asthma](#) [Asthma](#) [Atherosclerosis](#) [Atrophy](#) [Attention](#) [Autistic Disorder](#) [Bipolar Disorder](#) [Cardiovascular Diseases](#) [Carotid Artery Diseases](#) [Chronic Disease](#) [Cognition](#) [Cognition Disorders](#) [Depressive Disorder, Major](#) [Diabetes Mellitus, Type 2](#)

[Dominance, Cerebral](#)

[... see more](#)

[服務條款](#) | [隱私權政策](#) | [著作及商標](#) | [網站地圖](#)

©2016 亞諾法生技股份有限公司 Abnova Corporation. 版權所有.