



SZABO SCANDIC

Part of Europa Biosite

Produktinformation



Forschungsprodukte & Biochemikalien



Zellkultur & Verbrauchsmaterial



Diagnostik & molekulare Diagnostik



Laborgeräte & Service

Weitere Information auf den folgenden Seiten!
See the following pages for more information!



Lieferung & Zahlungsart

siehe unsere [Liefer- und Versandbedingungen](#)

Zuschläge

- Mindermengenzuschlag
- Trockeneiszuschlag
- Gefahrgutzuschlag
- Expressversand

SZABO-SCANDIC HandelsgmbH

Quellenstraße 110, A-1100 Wien

T. +43(0)1 489 3961-0

F. +43(0)1 489 3961-7

mail@szabo-scandic.com

www.szabo-scandic.com

[linkedin.com/company/szaboscandic](https://www.linkedin.com/company/szaboscandic)

HLA-A purified MaxPab mouse polyclonal antibody (B01P) MaxPab®

Catalog # : H00003105-B01P

規格 : [50 ug]

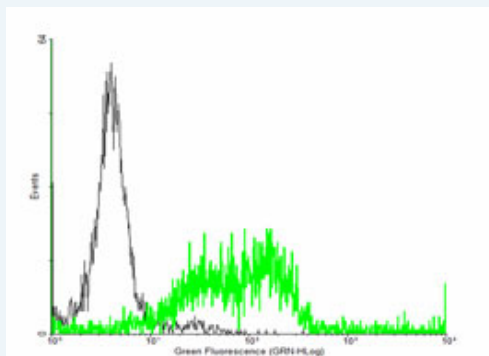
[List All](#)

Specification

Product Description:	Mouse polyclonal antibody raised against a full-length human HLA-A protein.
Immunogen:	HLA-A (NP_002107.3, 1 a.a. ~ 365 a.a) full-length human protein.
Sequence:	MAVMAPRTL L L L L L S G A L A L T Q T W A G S H S M R Y F F T S V S R P G R G E P R F I A V G Y V D D T Q F V R F D S D A A S Q R M E P R A P W I E Q E G P E Y W D Q E T R N V K A Q S Q T D R V D L G T L R G Y Y N Q S E A G S H T I Q I M Y G C D V G S D G R F L R G Y R Q D A Y D G K D Y I A L N E D L R S W T A A D M A A Q I T K R K W E A A H E A E Q L R A Y L D G T C V E W L R R Y L E N G K E T L Q R T D P P K T H M T H P I S D H E A T L R C W A L G F Y P A E I T L T W Q R D G E D Q T Q D T E L V E T R P A G D G T F Q K W A A V V P S G E E Q R Y T C H V Q H E G L P K P L T L R W E L S S Q P T I P I V G I I A G L V L L G A V I T G A V A A V M W R R K S S D R K G G S Y T Q A A S S D S A Q G S D V S L T A C K V
Host:	Mouse
Reactivity:	Human
Quality Control Testing:	Antibody reactive against mammalian transfected lysate.
Storage Buffer:	In 1x PBS, pH 7.4
Storage Instruction:	Store at -20°C or lower. Aliquot to avoid repeated freezing and thawing.
MSDS:	Download
Datasheet:	Download

Applications

Flow Cytometry



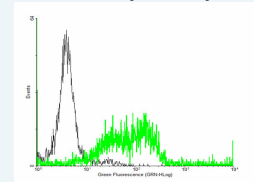
[enlarge this image](#)

FACS analysis of negative control 293 cells (Black) and HLA-A expressing 293 cells (Green) using HLA-A purified MaxPab mouse polyclonal antibody.

Western Blot (Tissue lysate)

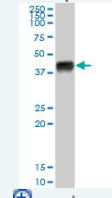
Application Image

Flow Cytometry



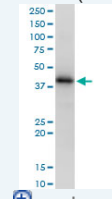
[enlarge](#)

Western Blot (Tissue lysate)



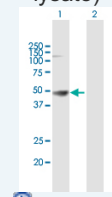
[enlarge](#)

Western Blot (Cell lysate)

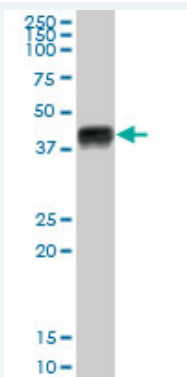


[enlarge](#)

Western Blot (Transfected lysate)



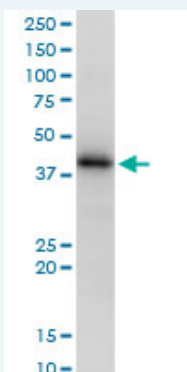
[enlarge](#)



HLA-A MaxPab polyclonal antibody. Western Blot analysis of HLA-A expression in human spleen.

[Protocol Download](#)

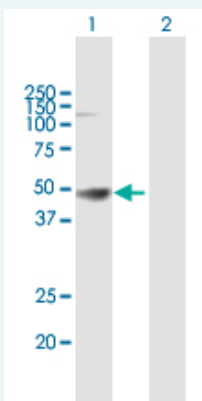
Western Blot (Cell lysate)



HLA-A MaxPab polyclonal antibody. Western Blot analysis of HLA-A expression in A-431.

[Protocol Download](#)

Western Blot (Transfected lysate)



Western Blot analysis of HLA-A expression in transfected 293T cell line (H00003105-T01) by HLA-A MaxPab polyclonal antibody.

Lane 1: HLA-A transfected lysate(40.15 KDa).

Lane 2: Non-transfected lysate.

[Protocol Download](#)

Gene Information

Entrez GeneID: [3105](#)

GeneBank [NM_002116](#)

Accession#:

Protein [NP_002107.3](#)

Accession#:

Gene Name: HLA-A

Gene Alias: HLAA

Gene Description: major histocompatibility complex, class I, A

Omim ID: [106300](#), [142800](#), [608579](#)

Gene Ontology: [Hyperlink](#)

Gene Summary: HLA-A belongs to the HLA class I heavy chain paralogues. This class I molecule is a heterodimer consisting of a heavy chain and a light chain (beta-2 microglobulin). The heavy chain is anchored in the membrane. Class I molecules play a central role in the immune system by presenting peptides derived from the endoplasmic reticulum lumen. They are expressed in nearly all cells. The heavy chain is approximately 45 kDa and its gene contains 8 exons. Exon 1 encodes the leader peptide, exons 2 and 3 encode the alpha1 and alpha2 domains, which both bind the peptide, exon 4 encodes the alpha3 domain, exon 5 encodes the transmembrane region, and exons 6 and 7 encode the cytoplasmic tail. Polymorphisms within exon 2 and exon 3 are responsible for the peptide binding specificity of each class one molecule. Typing for these polymorphisms is routinely done for bone marrow and kidney transplantation. Hundreds of HLA-A alleles have been described. [provided by RefSeq]

Other Designations: HLA class I histocompatibility antigen, A-23 alpha chain, MHC class I antigen HLA-A heavy chain, MHC leukocyte antigen, OTTHUMP00000161059, antigen presenting molecule, leucocyte antigen class I, leukocyte antigen class I-A

Gene Pathway

[Allograft rejection](#) [Antigen processing and presentation](#) [Autoimmune thyroid disease](#) [Cell adhesion molecules \(CAMs\)](#) [Endocytosis](#) [Graft-versus-host disease](#) [Natural killer cell mediated cytotoxicity](#) [Type I diabetes mellitus](#)

Related Disease

[Abortion, Habitual](#) [Abruptio Placentae](#) [Acquired Immunodeficiency Syndrome](#) [Acute Disease](#) [Addison Disease](#) [Adenocarcinoma](#) [Adenovirus Infections, Human](#) [Agranulocytosis](#) [AIDS-Related Opportunistic Infections](#) [Alcoholism](#) [Alopecia Areata](#) [Alveolar Bone Loss](#) [Alzheimer Disease](#) [Alzheimer disease](#) [Anemia](#) [Anemia, Aplastic](#) [Aortic Aneurysm, Abdominal](#) [Aortic Diseases](#) [Arterial Occlusive Diseases](#)

... see more

[服務條款](#) | [隱私權政策](#) | [著作及商標](#) | [網站地圖](#)

©2016 亞諾法生技股份有限公司 Abnova Corporation. 版權所有.