



# SZABO SCANDIC

Part of Europa Biosite

## Produktinformation



Forschungsprodukte & Biochemikalien



Zellkultur & Verbrauchsmaterial



Diagnostik & molekulare Diagnostik



Laborgeräte & Service

Weitere Information auf den folgenden Seiten!  
See the following pages for more information!



### Lieferung & Zahlungsart

siehe unsere [Liefer- und Versandbedingungen](#)

### Zuschläge

- Mindermengenzuschlag
- Trockeneiszuschlag
- Gefahrgutzuschlag
- Expressversand

### SZABO-SCANDIC HandelsgmbH

Quellenstraße 110, A-1100 Wien

T. +43(0)1 489 3961-0

F. +43(0)1 489 3961-7

[mail@szabo-scandic.com](mailto:mail@szabo-scandic.com)

[www.szabo-scandic.com](http://www.szabo-scandic.com)

[linkedin.com/company/szaboscandic](https://www.linkedin.com/company/szaboscandic) 

## HLA-A monoclonal antibody (M01), clone 2D6

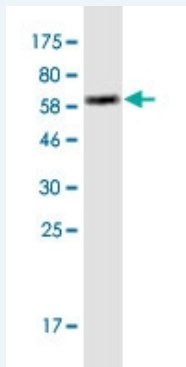
Catalog # : H00003105-M01

規格 : [ 100 ug ]

[List All](#)

### Specification

<b>Product Description:</b>	Mouse monoclonal antibody raised against a full-length recombinant HLA-A.
<b>Immunogen:</b>	HLA-A (AAH03069, 24 a.a. ~ 365 a.a) full-length recombinant protein with GST tag. MW of the GST tag alone is 26 KDa.
<b>Sequence:</b>	AGSHSMRYFFTSVSRPGRGEPFRFIAVGYVDDTQFVRFSDAASQKMEP RAPWIEQEGPEYWDQETRNMKAHSQTDRLNLGTLRGYYNQSEDGSHTI QIMYGCDVGPDGRFLRGYRQDAYDGKDYIALNEDLRSWTAADMAAQIT KRKWEAVHAAEQRRVYLEGRCVDGLRRYLENGKETLQRTDPPKTHMTH HPISDHEATLRCWALGFYPAEITLWQRDGEDQTQDELVETRPAGDG TFQKWAAWVPSGEEQRYTCHVQHEGLPKPLTLRWELSSQPTIPIVGIIA GLVLLGAVITGAVVAVMWRRKSSDRKGGSYTQAASSDSAQGSVDVSLT ACKV
<b>Host:</b>	Mouse
<b>Reactivity:</b>	Human
<b>Isotype:</b>	IgG2a Kappa
<b>Quality Control Testing:</b>	Antibody Reactive Against Recombinant Protein.



Western Blot detection against Immunogen (63.36 KDa) .

**Storage Buffer:** In 1x PBS, pH 7.4

**Storage Instruction:** Store at -20°C or lower. Aliquot to avoid repeated freezing and thawing.

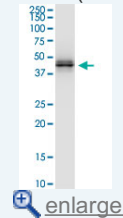
**Datasheet:** [Download](#)

### Applications

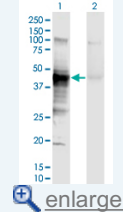
**Western Blot (Cell lysate)**

### Application Image

Western Blot (Cell lysate)

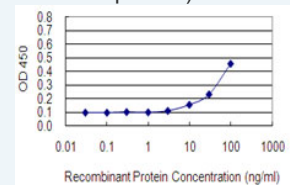


Western Blot (Transfected lysate)

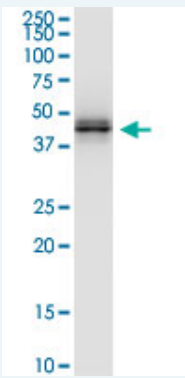


Western Blot (Recombinant protein)

Sandwich ELISA (Recombinant protein)



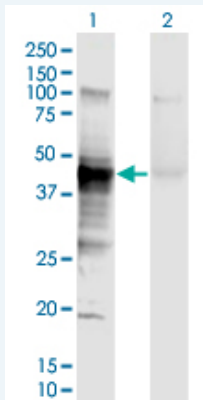
ELISA



HLA-A monoclonal antibody (M01), clone 2D6. Western Blot analysis of HLA-A expression in A-431.

[Protocol Download](#)

#### Western Blot (Transfected lysate)



Western Blot analysis of HLA-A expression in transfected 293T cell line by HLA-A monoclonal antibody (M01), clone 2D6.

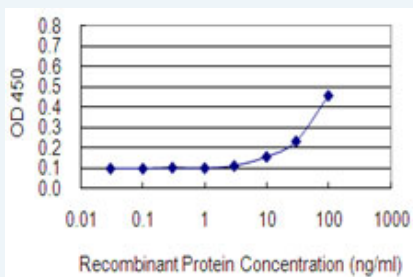
Lane 1: HLA-A transfected lysate (Predicted MW: 40.8 KDa).  
Lane 2: Non-transfected lysate.

[Protocol Download](#)

#### Western Blot (Recombinant protein)

[Protocol Download](#)

#### Sandwich ELISA (Recombinant protein)



Detection limit for recombinant GST tagged HLA-A is 3 ng/ml as a capture antibody.

[Protocol Download](#)

#### ELISA

#### Gene Information

Entrez GeneID: [3105](#)

GeneBank [BC003069](#)

Accession#:

Protein [AAH03069](#)

Accession#:

**Gene Name:** HLA-A

**Gene Alias:** HLAA

**Gene Description:** major histocompatibility complex, class I, A

**Omim ID:** [106300](#), [142800](#), [608579](#)

**Gene Ontology:** [Hyperlink](#)

**Gene Summary:** HLA-A belongs to the HLA class I heavy chain paralogues. This class I molecule is a heterodimer consisting of a heavy chain and a light chain (beta-2 microglobulin). The heavy chain is anchored in the membrane. Class I molecules play a central role in the immune system by presenting peptides derived from the endoplasmic reticulum lumen. They are expressed in nearly all cells. The heavy chain is approximately 45 kDa and its gene contains 8 exons. Exon 1 encodes the leader peptide, exons 2 and 3 encode the alpha1 and alpha2 domains, which both bind the peptide, exon 4 encodes the alpha3 domain, exon 5 encodes the transmembrane region, and exons 6 and 7 encode the cytoplasmic tail. Polymorphisms within exon 2 and exon 3 are responsible for the peptide binding specificity of each class one molecule. Typing for these polymorphisms is routinely done for bone marrow and kidney transplantation. Hundreds of HLA-A alleles have been described. [provided by RefSeq]

**Other Designations:** HLA class I histocompatibility antigen, A-23 alpha chain, MHC class I antigen, HLA-A heavy chain, MHC leukocyte antigen, OTTHUMP00000161059, antigen presenting molecule, leucocyte antigen class I, leukocyte antigen class I-A

### Gene Pathway

[Allograft rejection](#) [Antigen processing and presentation](#) [Autoimmune thyroid disease](#) [Cell adhesion molecules \(CAMs\)](#) [Endocytosis](#) [Graft-versus-host disease](#) [Natural killer cell mediated cytotoxicity](#) [Type I diabetes mellitus](#)

### Related Disease

[Abortion, Habitual](#) [Abruptio Placentae](#) [Acquired Immunodeficiency Syndrome](#) [Acute Disease](#) [Addison Disease](#) [Adenocarcinoma](#) [Adenovirus Infections, Human](#) [Agranulocytosis](#) [AIDS-Related Opportunistic Infections](#) [Alcoholism](#) [Alopecia Areata](#) [Alveolar Bone Loss](#) [Alzheimer Disease](#) [Alzheimer disease](#) [Anemia](#) [Anemia, Aplastic](#) [Aortic Aneurysm, Abdominal](#) [Aortic Diseases](#) [Arterial Occlusive Diseases](#)

... see more