



# SZABO SCANDIC

Part of Europa Biosite

## Produktinformation



Forschungsprodukte & Biochemikalien



Zellkultur & Verbrauchsmaterial



Diagnostik & molekulare Diagnostik



Laborgeräte & Service

Weitere Information auf den folgenden Seiten!  
See the following pages for more information!



### Lieferung & Zahlungsart

siehe unsere [Liefer- und Versandbedingungen](#)

### Zuschläge

- Mindermengenzuschlag
- Trockeneiszuschlag
- Gefahrgutzuschlag
- Expressversand

### SZABO-SCANDIC HandelsgmbH

Quellenstraße 110, A-1100 Wien

T. +43(0)1 489 3961-0

F. +43(0)1 489 3961-7

[mail@szabo-scandic.com](mailto:mail@szabo-scandic.com)

[www.szabo-scandic.com](http://www.szabo-scandic.com)

[linkedin.com/company/szaboscandic](https://www.linkedin.com/company/szaboscandic) 

## HLA-A 293T Cell Transient Overexpression Lysate(Denatured)

Catalog # : H00003105-T01

規格 : [ 100 uL ]

List All

### Specification

**Transfected Cell Line:** 293T

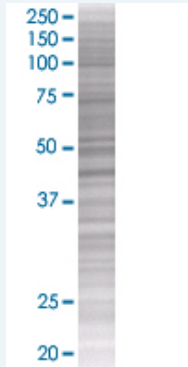
**Plasmid:** pCMV-HLA-A full-length

**Host:** Human

**Theoretical MW (kDa):** 40.26

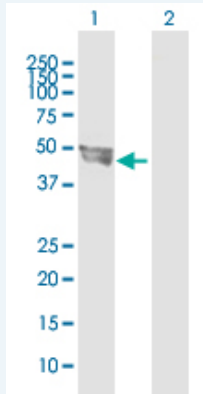
**Quality Control Testing:** Transient overexpression cell lysate was tested with Anti-HLA-A antibody (H00003105-B01) by Western Blots.

#### SDS-PAGE Gel



HLA-A transfected lysate.

#### Western Blot



Lane 1: HLA-A transfected lysate ( 40.8 KDa)

Lane 2: Non-transfected lysate.

**Storage Buffer:** 1X Sample Buffer (50 mM Tris-HCl, 2% SDS, 10% glycerol, 300 mM 2-mercaptoethanol, 0.01% Bromophenol blue)

**Storage Instruction:** Store at -80°C. Aliquot to avoid repeated freezing and thawing.

**MSDS:**  [Download](#)

### Applications

## Western Blot

### Gene Information

Entrez GeneID: [3105](#)

GeneBank Accession#: [NM\\_002116](#)

Protein Accession#: [NP\\_002107](#)

Gene Name: HLA-A

Gene Alias: HLAA

Gene Description: major histocompatibility complex, class I, A

Omim ID: [106300](#), [142800](#), [608579](#)

Gene Ontology: [Hyperlink](#)

**Gene Summary:** HLA-A belongs to the HLA class I heavy chain paralogues. This class I molecule is a heterodimer consisting of a heavy chain and a light chain (beta-2 microglobulin). The heavy chain is anchored in the membrane. Class I molecules play a central role in the immune system by presenting peptides derived from the endoplasmic reticulum lumen. They are expressed in nearly all cells. The heavy chain is approximately 45 kDa and its gene contains 8 exons. Exon 1 encodes the leader peptide, exons 2 and 3 encode the alpha1 and alpha2 domains, which both bind the peptide, exon 4 encodes the alpha3 domain, exon 5 encodes the transmembrane region, and exons 6 and 7 encode the cytoplasmic tail. Polymorphisms within exon 2 and exon 3 are responsible for the peptide binding specificity of each class one molecule. Typing for these polymorphisms is routinely done for bone marrow and kidney transplantation. Hundreds of HLA-A alleles have been described. [provided by RefSeq]

**Other Designations:** HLA class I histocompatibility antigen, A-23 alpha chain, MHC class I antigen HLA-A heavy chain, MHC leukocyte antigen, OTTHUMP00000161059, antigen presenting molecule, leukocyte antigen class I, leukocyte antigen class I-A

### Gene Pathway

[Allograft rejection](#) [Antigen processing and presentation](#) [Autoimmune thyroid disease](#)  
[Cell adhesion molecules \(CAMs\)](#) [Endocytosis](#) [Graft-versus-host disease](#)  
[Natural killer cell mediated cytotoxicity](#) [Type I diabetes mellitus](#)

### Related Disease

[Abortion, Habitual](#) [Abruptio Placentae](#) [Acquired Immunodeficiency Syndrome](#)  
[Acute Disease](#) [Addison Disease](#) [Adenocarcinoma](#) [Adenovirus Infections, Human](#)  
[Agranulocytosis](#) [AIDS-Related Opportunistic Infections](#) [Alcoholism](#) [Alopecia Areata](#)  
[Alveolar Bone Loss](#) [Alzheimer Disease](#) [Alzheimer disease](#) [Anemia](#) [Anemia, Aplastic](#)  
[Aortic Aneurysm, Abdominal](#) [Aortic Diseases](#) [Arterial Occlusive Diseases](#)

... see more