



SZABO SCANDIC

Part of Europa Biosite

Produktinformation



Forschungsprodukte & Biochemikalien



Zellkultur & Verbrauchsmaterial



Diagnostik & molekulare Diagnostik



Laborgeräte & Service

Weitere Information auf den folgenden Seiten!
See the following pages for more information!



Lieferung & Zahlungsart

siehe unsere [Liefer- und Versandbedingungen](#)

Zuschläge

- Mindermengenzuschlag
- Trockeneiszuschlag
- Gefahrgutzuschlag
- Expressversand

SZABO-SCANDIC HandelsgmbH

Quellenstraße 110, A-1100 Wien

T. +43(0)1 489 3961-0

F. +43(0)1 489 3961-7

mail@szabo-scandic.com

www.szabo-scandic.com

[linkedin.com/company/szaboscandic](https://www.linkedin.com/company/szaboscandic) 

HLA-C 293T Cell Transient Overexpression Lysate(Denatured)

Catalog # : H00003107-T01

規格 : [100 uL]

List All

Specification

Transfected Cell Line: 293T

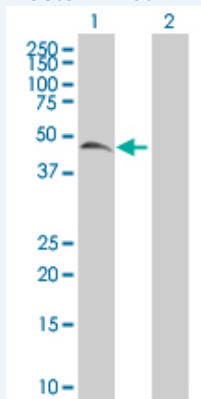
Plasmid: pCMV-HLA-C full-length

Host: Human

Theoretical MW (kDa): 40.37

Quality Control Testing: Transient overexpression cell lysate was tested with Anti-HLA-C antibody ([H00003107-B01](#)) by Western Blots.

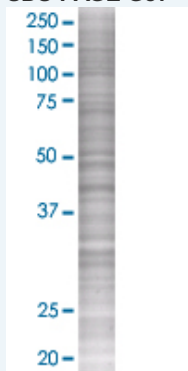
Western Blot



Lane 1: HLA-C transfected lysate (40.8 KDa)

Lane 2: Non-transfected lysate.

SDS-PAGE Gel



HLA-C transfected lysate.

Storage Buffer: 1X Sample Buffer (50 mM Tris-HCl, 2% SDS, 10% glycerol, 300 mM 2-mercaptoethanol, 0.01% Bromophenol blue)

Storage Instruction: Store at -80°C. Aliquot to avoid repeated freezing and thawing.

MSDS:  [Download](#)

Applications

Application Image

Western Blot

Western Blot

Gene Information

Entrez GeneID: [3107](#)

GeneBank [BC002463](#)
Accession#:

Protein [AAH02463](#)
Accession#:

Gene Name: HLA-C

Gene Alias: D6S204, FLJ27082, HLA-Cw, HLA-Cw12, HLA-JY3, HLC-C, PSORS1

Gene Description: major histocompatibility complex, class I, C

Omim ID: [142840](#), [177900](#)

Gene Ontology: [Hyperlink](#)

Gene Summary: HLA-C belongs to the HLA class I heavy chain paralogues. This class I molecule is a heterodimer consisting of a heavy chain and a light chain (beta-2 microglobulin). The heavy chain is anchored in the membrane. Class I molecules play a central role in the immune system by presenting peptides derived from endoplasmic reticulum lumen. They are expressed in nearly all cells. The heavy chain is approximately 45 kDa and its gene contains 8 exons. Exon one encodes the leader peptide, exons 2 and 3 encode the alpha1 and alpha2 domain, which both bind the peptide, exon 4 encodes the alpha3 domain, exon 5 encodes the transmembrane region, and exons 6 and 7 encode the cytoplasmic tail. Polymorphisms within exon 2 and exon 3 are responsible for the peptide binding specificity of each class one molecule. Typing for these polymorphisms is routinely done for bone marrow and kidney transplantation. Over one hundred HLA-C alleles have been described [provided by RefSeq]

Other Designations: HLA class I antigen, HLA class I heavy chain, HLA class I histocompatibility antigen, C alpha chain, HLA-C (Cw*1201), HLA-Cw*050x, MHC class I HLA-C, MHC class I HLA-Cw*0803, MHC class I antigen HLA-C, MHC class I antigen heavy chain HLA-C, MHC class I protein HLA

Gene Pathway

[Allograft rejection](#) [Antigen processing and presentation](#) [Autoimmune thyroid disease](#)
[Cell adhesion molecules \(CAMs\)](#) [Endocytosis](#) [Graft-versus-host disease](#)
[Natural killer cell mediated cytotoxicity](#) [Type I diabetes mellitus](#)

Related Disease

[Abortion, Habitual](#) [Abortion, Spontaneous](#) [Acquired Immunodeficiency Syndrome](#)
[Acute Disease](#) [Adenocarcinoma](#) [Alcoholism](#) [Alopecia Areata](#) [Alveolar Bone Loss](#)
[Anemia, Aplastic](#) [Arthritis, Psoriatic](#) [Arthritis, Reactive](#) [Arthritis, Rheumatoid](#) [Asthma](#) [Asthma](#)
[Autoimmune Diseases](#) [Behcet Syndrome](#) [beta-Thalassemia](#) [Bipolar Disorder](#)
[Brain Neoplasms](#)

... see more