



# SZABO SCANDIC

Part of Europa Biosite

## Produktinformation



Forschungsprodukte & Biochemikalien



Zellkultur & Verbrauchsmaterial



Diagnostik & molekulare Diagnostik



Laborgeräte & Service

Weitere Information auf den folgenden Seiten!  
See the following pages for more information!



### Lieferung & Zahlungsart

siehe unsere [Liefer- und Versandbedingungen](#)

### Zuschläge

- Mindermengenzuschlag
- Trockeneiszuschlag
- Gefahrgutzuschlag
- Expressversand

### SZABO-SCANDIC HandelsgmbH

Quellenstraße 110, A-1100 Wien

T. +43(0)1 489 3961-0

F. +43(0)1 489 3961-7

[mail@szabo-scandic.com](mailto:mail@szabo-scandic.com)

[www.szabo-scandic.com](http://www.szabo-scandic.com)

[linkedin.com/company/szaboscandic](https://www.linkedin.com/company/szaboscandic) 

## HLA-DMA (Human) Matched Antibody Pair

Catalog # : H00003108-AP51

規格 : [ 1 Set ]

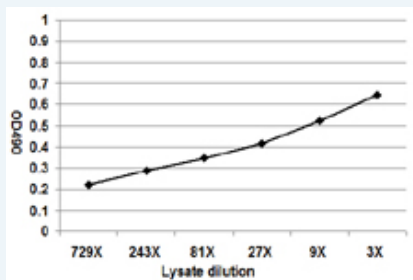
List All

### Specification

**Product Description:** This antibody pair set comes with matched antibody pair to detect and quantify protein level of human HLA-DMA.

**Reactivity:** Human

**Quality Control Testing:** Standard curve using HLA-DMA 293T overexpression lysate (non-denatured) as an analyte.



Sandwich ELISA detection sensitivity ranging from approximately 729x to 3x dilution of the HLA-DMA 293T overexpression lysate (non-denatured).

**Supplied Product:** Antibody pair set content:  
 1. Capture antibody: mouse monoclonal anti-HLA-DMA, IgG1 Kappa (100 ug)  
 2. Detection antibody: rabbit purified polyclonal anti-HLA-DMA (50 ug)  
 \*Reagents are sufficient for at least 3-5 x 96 well plates using recommended protocols.

**Storage Instruction:** Store reagents of the antibody pair set at -20°C or lower. Please aliquot to avoid repeated freeze thaw cycle. Reagents should be returned to -20°C storage immediately after use.

### Applications

ELISA Pair (Transfected lysate)

 [Protocol Download](#)

### Gene Information

**Entrez GeneID:** [3108](#)

**Gene Name:** HLA-DMA

**Gene Alias:** D6S222E,DMA,HLADM,RING6

**Gene Description:** major histocompatibility complex, class II, DM alpha

**Omim ID:** [142855](#)

**Gene Ontology:** [Hyperlink](#)

**Gene Summary:** HLA-DMA belongs to the HLA class II alpha chain paralogues. This

class II molecule is a heterodimer consisting of an alpha (DMA) and a beta chain (DMB), both anchored in the membrane. It is located in intracellular vesicles. DM plays a central role in the peptide loading of MHC class II molecules by helping to release the CLIP molecule from the peptide binding site. Class II molecules are expressed in antigen presenting cells (APC: B lymphocytes, dendritic cells, macrophages). The alpha chain is approximately 33-35 kDa and its gene contains 5 exons. Exon one encodes the leader peptide, exons 2 and 3 encode the two extracellular domains, exon 4 encodes the transmembrane domain and the cytoplasmic tail. [provided by RefSeq]

---

**Other** OTTHUMP00000029242,OTTHUMP00000062997,class II  
**Designations:** histocompatibility antigen, M alpha chain

---

### Gene Pathway

---

[Allograft rejection](#) [Antigen processing and presentation](#) [Asthma](#)  
[Autoimmune thyroid disease](#) [Cell adhesion molecules \(CAMs\)](#) [Graft-versus-host disease](#)  
[Systemic lupus erythematosus](#) [Type I diabetes mellitus](#)

### Related Disease

---

[Acquired Immunodeficiency Syndrome](#) [AIDS-Related Opportunistic Infections](#)  
[Antiphospholipid Syndrome](#) [Arthritis, Rheumatoid](#) [Cardiovascular Diseases](#)  
[Condylomata Acuminata](#) [Dermatitis, Contact](#) [Dermatitis, Occupational](#)  
[Diabetes Mellitus, Type 2](#) [Disease Progression](#) [Edema](#) [Genetic Predisposition to Disease](#)  
[HIV Seropositivity](#) [Lupus Erythematosus, Systemic](#) [Malaria](#) [Measles](#) [Multiple Sclerosis](#)  
[Mycobacterium avium-intracellulare Infection](#) [Psoriasis](#)

---

[服務條款](#) | [隱私權政策](#) | [著作及商標](#) | [網站地圖](#)

©2016 亞諾法生技股份有限公司 Abnova Corporation. 版權所有.