



SZABO SCANDIC

Part of Europa Biosite

Produktinformation



Forschungsprodukte & Biochemikalien



Zellkultur & Verbrauchsmaterial



Diagnostik & molekulare Diagnostik



Laborgeräte & Service

Weitere Information auf den folgenden Seiten!
See the following pages for more information!



Lieferung & Zahlungsart

siehe unsere [Liefer- und Versandbedingungen](#)

Zuschläge

- Mindermengenzuschlag
- Trockeneiszuschlag
- Gefahrgutzuschlag
- Expressversand

SZABO-SCANDIC HandelsgmbH

Quellenstraße 110, A-1100 Wien

T. +43(0)1 489 3961-0

F. +43(0)1 489 3961-7

mail@szabo-scandic.com

www.szabo-scandic.com

[linkedin.com/company/szaboscandic](https://www.linkedin.com/company/szaboscandic) 

HLA-DMA purified MaxPab mouse polyclonal antibody (B01P) MaxPab®

Catalog # : H00003108-B01P

規格 : [50 ug]

[List All](#)

Specification

Product Description: Mouse polyclonal antibody raised against a full-length human HLA-DMA protein.

Immunogen: HLA-DMA (NP_006111.2, 1 a.a. ~ 261 a.a) full-length human protein.

Sequence:
 MGHEQNQGALLQMLPLLWLLPHSWAVPEAPTPMMWPDDLQNHFLHT
 VYQDGGSPSVGLSEAYDEDQLFFFDFSQNTRVPRLPEFADWAQEQGD
 APAILFDKEFCEWMIQQIGPKLDGKIPVSRGFPIAEVFTLKPLEFGKPNTL
 VCFVSNLFPPLMTVNWQHHSVPVEGFGPTFVSAVDGLSFQAFSYLNFT
 PEPSEDFSCIVTHEIDRYTAIAYWVPRNALPSDLLENLVCVAFGLGVLGIIV
 GIVLIYFRKPCSGD

Host: Mouse

Reactivity: Human

Quality Control Testing: Antibody reactive against mammalian transfected lysate.

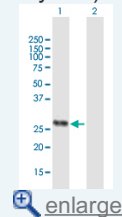
Storage Buffer: In 1x PBS, pH 7.4


Storage Instruction: Store at -20°C or lower. Aliquot to avoid repeated freezing and thawing.

Datasheet:  [Download](#)

Application Image

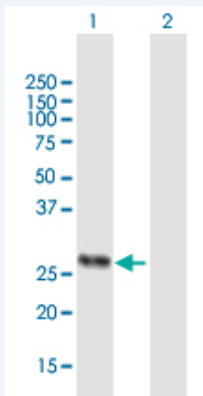
Western Blot (Transfected lysate)



 [enlarge](#)

Applications

Western Blot (Transfected lysate)



Western Blot analysis of HLA-DMA expression in transfected 293T cell line ([H00003108-T01](#)) by HLA-DMA MaxPab polyclonal antibody.

Lane 1: HLA-DMA transfected lysate(28.71 KDa).

Lane 2: Non-transfected lysate.

 [Protocol Download](#)

Gene Information

Entrez GeneID: [3108](#)

GeneBank Accession#: [NM_006120.2](#)

Protein Accession#: [NP_006111.2](#)

Gene Name: HLA-DMA

Gene Alias: D6S222E,DMA,HLADM,RING6

Gene Description: major histocompatibility complex, class II, DM alpha

Omim ID: [142855](#)

Gene Ontology: [Hyperlink](#)

Gene Summary: HLA-DMA belongs to the HLA class II alpha chain paralogues. This class II molecule is a heterodimer consisting of an alpha (DMA) and a beta chain (DMB), both anchored in the membrane. It is located in intracellular vesicles. DM plays a central role in the peptide loading of MHC class II molecules by helping to release the CLIP molecule from the peptide binding site. Class II molecules are expressed in antigen presenting cells (APC: B lymphocytes, dendritic cells, macrophages). The alpha chain is approximately 33-35 kDa and its gene contains 5 exons. Exon one encodes the leader peptide, exons 2 and 3 encode the two extracellular domains, exon 4 encodes the transmembrane domain and the cytoplasmic tail. [provided by RefSeq]

Other Designations: OTTHUMP00000029242,OTTHUMP00000062997,class II histocompatibility antigen, M alpha chain

Gene Pathway

[Allograft rejection](#) [Antigen processing and presentation](#) [Asthma](#)
[Autoimmune thyroid disease](#) [Cell adhesion molecules \(CAMs\)](#) [Graft-versus-host disease](#)
[Systemic lupus erythematosus](#) [Type I diabetes mellitus](#)

Related Disease

[Acquired Immunodeficiency Syndrome](#) [AIDS-Related Opportunistic Infections](#)
[Antiphospholipid Syndrome](#) [Arthritis, Rheumatoid](#) [Cardiovascular Diseases](#)
[Condylomata Acuminata](#) [Dermatitis, Contact](#) [Dermatitis, Occupational](#)
[Diabetes Mellitus, Type 2](#) [Disease Progression](#) [Edema](#) [Genetic Predisposition to Disease](#)
[HIV Seropositivity](#) [Lupus Erythematosus, Systemic](#) [Malaria](#) [Measles](#) [Multiple Sclerosis](#)
[Mycobacterium avium-intracellulare Infection](#) [Psoriasis](#)