



SZABO SCANDIC

Part of Europa Biosite

Produktinformation



Forschungsprodukte & Biochemikalien



Zellkultur & Verbrauchsmaterial



Diagnostik & molekulare Diagnostik



Laborgeräte & Service

Weitere Information auf den folgenden Seiten!
See the following pages for more information!



Lieferung & Zahlungsart

siehe unsere [Liefer- und Versandbedingungen](#)

Zuschläge

- Mindermengenzuschlag
- Trockeneiszuschlag
- Gefahrgutzuschlag
- Expressversand

SZABO-SCANDIC HandelsgmbH

Quellenstraße 110, A-1100 Wien

T. +43(0)1 489 3961-0

F. +43(0)1 489 3961-7

mail@szabo-scandic.com

www.szabo-scandic.com

[linkedin.com/company/szaboscandic](https://www.linkedin.com/company/szaboscandic) 

HLA-DMA monoclonal antibody (M01), clone 3F12-F11

Catalog # : H00003108-M01

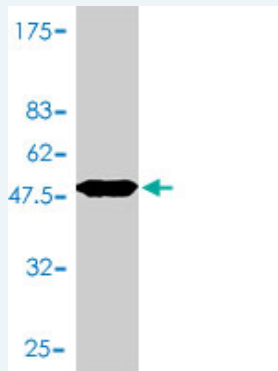
規格 : [100 ug]

[List All](#)

Specification

Product Description:	Mouse monoclonal antibody raised against a full length recombinant HLA-DMA.
Immunogen:	HLA-DMA (AAH11447, 1 a.a. ~ 261 a.a) full-length recombinant protein with GST tag. MW of the GST tag alone is 26 KDa.
Sequence:	MGHEQNQGAALLQMLPLLWLLPHSWAVPEAPTPMWPDDLQNHFTLHT VYCQDGSPSVGLSEAYDEDQLFFDFSQNTRVPRLPEFADWAQEQGD APAILFDKEFCEWMIQQIGPKLDGKIPVSRGFPIAEVFTLKPLEFGKPNTL VCFVSNLFPMLTVNWQHHSVPVEGFGPTFVSAVDGLSFQAFSYLNFT PEPSDIFSCIVTHEIDRYTAIYWVPRNALPSDLLENLVCVAFGLGVLGIV GIVLIYFRKPCSGD
Host:	Mouse
Reactivity:	Human
Isotype:	IgG1 kappa

Quality Control Testing: Antibody Reactive Against Recombinant Protein.



Western Blot detection against Immunogen (54.45 KDa) .

Storage Buffer: In 1x PBS, pH 7.4

Storage Instruction: Store at -20°C or lower. Aliquot to avoid repeated freezing and thawing.

MSDS: [Download](#)

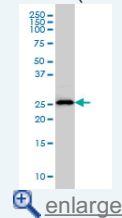
Datasheet: [Download](#)

Applications

Western Blot (Cell lysate)

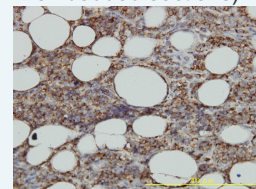
Application Image

Western Blot (Cell lysate)

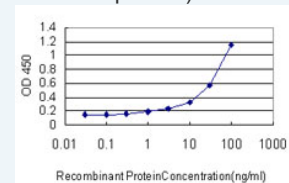


Western Blot (Recombinant protein)

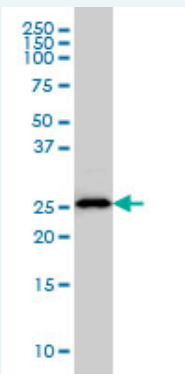
Immunohistochemistry (Formalin/PFA-fixed paraffin-embedded sections)



Sandwich ELISA (Recombinant protein)



ELISA



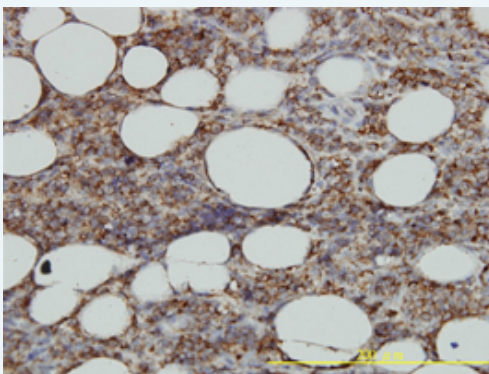
HLA-DMA monoclonal antibody (M01), clone 3F12-F11 Western Blot analysis of HLA-DMA expression in U-2 OS (Cat # L022V1).

[Protocol Download](#)

Western Blot (Recombinant protein)

[Protocol Download](#)

Immunohistochemistry (Formalin/PFA-fixed paraffin-embedded sections)

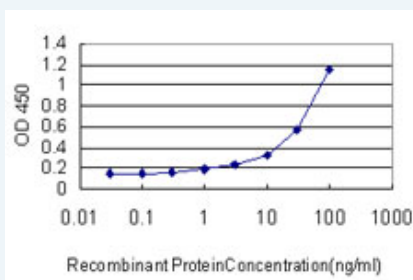


[enlarge this image](#)

Immunoperoxidase of monoclonal antibody to HLA-DMA on formalin-fixed paraffin-embedded human malignant lymphoma, diffuse large B tissue. [antibody concentration 3 ug/ml]

[Protocol Download](#)

Sandwich ELISA (Recombinant protein)



Detection limit for recombinant GST tagged HLA-DMA is approximately 1ng/ml as a capture antibody.

[Protocol Download](#)

ELISA

Gene Information

Entrez GeneID: [3108](#)

GeneBank [BC011447](#)
Accession#:

Protein [AAH11447](#)
Accession#:

Gene Name: HLA-DMA

Gene Alias: D6S222E,DMA,HLADM,RING6

Gene Description: major histocompatibility complex, class II, DM alpha

Omim ID: [142855](#)

Gene Ontology: [Hyperlink](#)

Gene Summary: HLA-DMA belongs to the HLA class II alpha chain paralogues. This class II molecule is a heterodimer consisting of an alpha (DMA) and a beta chain (DMB), both anchored in the membrane. It is located in intracellular vesicles. DM plays a central role in the peptide loading of MHC class II molecules by helping to release the CLIP molecule from the peptide binding site. Class II molecules are expressed in antigen presenting cells (APC: B lymphocytes, dendritic cells, macrophages). The alpha chain is approximately 33-35 kDa and its gene contains 5 exons. Exon one encodes the leader peptide, exons 2 and 3 encode the two extracellular domains, exon 4 encodes the transmembrane domain and the cytoplasmic tail. [provided by RefSeq]

Other Designations: OTTHUMP00000029242,OTTHUMP00000062997,class II histocompatibility antigen, M alpha chain

Gene Pathway

[Allograft rejection](#) [Antigen processing and presentation](#) [Asthma](#)
[Autoimmune thyroid disease](#) [Cell adhesion molecules \(CAMs\)](#) [Graft-versus-host disease](#)
[Systemic lupus erythematosus](#) [Type I diabetes mellitus](#)

Related Disease

[Acquired Immunodeficiency Syndrome](#) [AIDS-Related Opportunistic Infections](#)
[Antiphospholipid Syndrome](#) [Arthritis, Rheumatoid](#) [Cardiovascular Diseases](#)
[Condylomata Acuminata](#) [Dermatitis, Contact](#) [Dermatitis, Occupational](#)
[Diabetes Mellitus, Type 2](#) [Disease Progression](#) [Edema](#) [Genetic Predisposition to Disease](#)
[HIV Seropositivity](#) [Lupus Erythematosus, Systemic](#) [Malaria](#) [Measles](#) [Multiple Sclerosis](#)
[Mycobacterium avium-intracellulare Infection](#) [Psoriasis](#)

[服務條款](#) | [隱私權政策](#) | [著作及商標](#) | [網站地圖](#)

©2016 亞諾法生技股份有限公司 Abnova Corporation. 版權所有.