



SZABO SCANDIC

Part of Europa Biosite

Produktinformation



Forschungsprodukte & Biochemikalien



Zellkultur & Verbrauchsmaterial



Diagnostik & molekulare Diagnostik



Laborgeräte & Service

Weitere Information auf den folgenden Seiten!
See the following pages for more information!



Lieferung & Zahlungsart

siehe unsere [Liefer- und Versandbedingungen](#)

Zuschläge

- Mindermengenzuschlag
- Trockeneiszuschlag
- Gefahrgutzuschlag
- Expressversand

SZABO-SCANDIC HandelsgmbH

Quellenstraße 110, A-1100 Wien

T. +43(0)1 489 3961-0

F. +43(0)1 489 3961-7

mail@szabo-scandic.com

www.szabo-scandic.com

[linkedin.com/company/szaboscandic](https://www.linkedin.com/company/szaboscandic) 

HLA-DMB 293T Cell Transient Overexpression Lysate(Denatured)

Catalog # : H00003109-T03

規格 : [100 uL]

List All

Specification

Transfected Cell Line: 293T

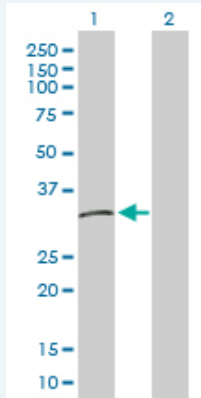
Plasmid: pCMV-HLA-DMB full-length

Host: Human

Theoretical MW (kDa): 28.9

Quality Control Testing: Transient overexpression cell lysate was tested with Anti-HLA-DMB antibody ([H00003109-D01P](#)) by Western Blots.

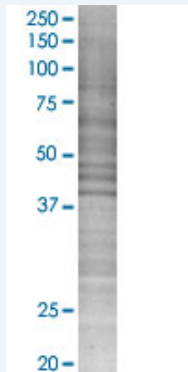
Western Blot



Lane 1: HLA-DMB transfected lysate (28.90 KDa)

Lane 2: Non-transfected lysate.

SDS-PAGE Gel



HLA-DMB transfected lysate.

Storage Buffer: 1X Sample Buffer (50 mM Tris-HCl, 2% SDS, 10% glycerol, 300 mM 2-mercaptoethanol, 0.01% Bromophenol blue)

Storage Instruction: Store at -80°C. Aliquot to avoid repeated freezing and thawing.

MSDS:  [Download](#)

Applications

Application Image

Western Blot

Western Blot

Gene Information

Entrez GeneID: [3109](#)

GeneBank [NM_002118](#)
Accession#:

Protein [NP_002109.1](#)
Accession#:

Gene Name: HLA-DMB

Gene Alias: D6S221E,RING7

Gene Description: major histocompatibility complex, class II, DM beta

Omim ID: [142856](#)

Gene Ontology: [Hyperlink](#)

Gene Summary: HLA-DMB belongs to the HLA class II beta chain paralogues. This class II molecule is a heterodimer consisting of an alpha (DMA) and a beta (DMB) chain, both anchored in the membrane. It is located in intracellular vesicles. DM plays a central role in the peptide loading of MHC class II molecules by helping to release the CLIP (class II-associated invariant chain peptide) molecule from the peptide binding site. Class II molecules are expressed in antigen presenting cells (APC: B lymphocytes, dendritic cells, macrophages). The beta chain is approximately 26-28 kDa and its gene contains 6 exons. Exon one encodes the leader peptide, exons 2 and 3 encode the two extracellular domains, exon 4 encodes the transmembrane domain and exon 5 encodes the cytoplasmic tail. [provided by RefSeq]

Other Designations: MHC class II HLA-DMB, MHC class II antigen HLA-DM beta chain, OTTHUMP00000029257, class II histocompatibility antigen, M beta chain

Gene Pathway

[Allograft rejection](#) [Antigen processing and presentation](#) [Asthma](#)
[Autoimmune thyroid disease](#) [Cell adhesion molecules \(CAMs\)](#) [Graft-versus-host disease](#)
[Systemic lupus erythematosus](#) [Type I diabetes mellitus](#)

Related Disease

[Antiphospholipid Syndrome](#) [Arthritis, Rheumatoid](#) [Cardiovascular Diseases](#)
[Condylomata Acuminata](#) [Dermatitis, Contact](#) [Dermatitis, Occupational](#)
[Diabetes Mellitus, Type 2](#) [Disease Progression](#) [Edema](#) [Genetic Predisposition to Disease](#)
[Lupus Erythematosus, Systemic](#) [Measles](#) [Psoriasis](#)