



SZABO SCANDIC

Part of Europa Biosite

Produktinformation



Forschungsprodukte & Biochemikalien



Zellkultur & Verbrauchsmaterial



Diagnostik & molekulare Diagnostik



Laborgeräte & Service

Weitere Information auf den folgenden Seiten!
See the following pages for more information!



Lieferung & Zahlungsart

siehe unsere [Liefer- und Versandbedingungen](#)

Zuschläge

- Mindermengenzuschlag
- Trockeneiszuschlag
- Gefahrgutzuschlag
- Expressversand

SZABO-SCANDIC HandelsgmbH

Quellenstraße 110, A-1100 Wien

T. +43(0)1 489 3961-0

F. +43(0)1 489 3961-7

mail@szabo-scandic.com

www.szabo-scandic.com

[linkedin.com/company/szaboscandic](https://www.linkedin.com/company/szaboscandic) 

HLA-DOA purified MaxPab rabbit polyclonal antibody (D01P) MaxPab®

Catalog # : H00003111-D01P

規格 : [100 ug]

[List All](#)

Specification

Product Description: Rabbit polyclonal antibody raised against a full-length human HLA-DOA protein.

Immunogen: HLA-DOA (NP_002110.1, 1 a.a. ~ 250 a.a) full-length human protein.

Sequence:
 MALRAGLVLGFHTLMTLLSPQEAGATKADHMGSYGPAFYQSYGASGQ
 FTHEFDEEQLFSVDLKKSEAVWRLPEFGDFARFDPQGGLAGIAAIAHL
 DILVERSNRSRAINVPPRVTVLPKSRVELGQPNILICVDNIFPPVINITWLRN
 GQTVTEGVAQTSFYSPDHLFRKFHYLPFVPSAEDVYDCQVEHWGLDA
 PLLRHWELQVPIPPDAMETLVCALGLAIGLVGFLVGTVLIIMGTYSVSR

Host: Rabbit

Reactivity: Human

Quality Control Testing: Antibody reactive against mammalian transfected lysate.

Storage Buffer: In 1x PBS, pH 7.4

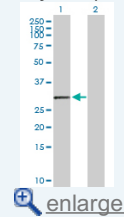
Storage Instruction: Store at -20°C or lower. Aliquot to avoid repeated freezing and thawing.

MSDS: [Download](#)

Datasheet: [Download](#)

Application Image

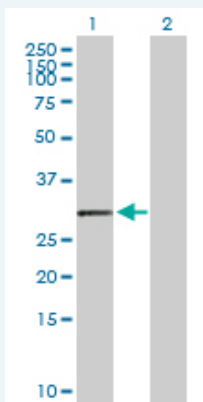
Western Blot (Transfected lysate)



[enlarge](#)

Applications

Western Blot (Transfected lysate)



Western Blot analysis of HLA-DOA expression in transfected 293T cell line (H00003111-T02) by HLA-DOA MaxPab polyclonal antibody.

Lane 1: HLA-DOA transfected lysate(27.60 KDa).
 Lane 2: Non-transfected lysate.

[Protocol Download](#)

Gene Information

Entrez GeneID: [3111](#)

GeneBank
Accession#: [NM_002119](#)

Protein
Accession#: [NP_002110.1](#)

Gene Name: HLA-DOA

Gene Alias: HLA-DNA,HLA-DZA,HLADZ

Gene
Description: major histocompatibility complex, class II, DO alpha

Omim ID: [142930](#)

Gene Ontology: [Hyperlink](#)

Gene Summary: HLA-DOA belongs to the HLA class II alpha chain paralogues. HLA-DOA forms a heterodimer with HLA-DOB. The heterodimer, HLA-DO, is found in lysosomes in B cells and regulates HLA-DM-mediated peptide loading on MHC class II molecules. In comparison with classical HLA class II molecules, this gene exhibits very little sequence variation, especially at the protein level. [provided by RefSeq]

Other Designations: HLA-D0-alpha,MHC class II antigen,OTTHUMP00000029303,lymphocyte antigen,major histocompatibility complex, class II, DN alpha

Gene Pathway

[Allograft rejection](#) [Antigen processing and presentation](#) [Asthma](#)
[Autoimmune thyroid disease](#) [Cell adhesion molecules \(CAMs\)](#) [Graft-versus-host disease](#)
[Systemic lupus erythematosus](#) [Type I diabetes mellitus](#)

Related Disease

[Arthritis, Rheumatoid](#) [Cardiovascular Diseases](#) [Diabetes Mellitus, Type 1](#)
[Diabetes Mellitus, Type 2](#) [Edema](#) [Genetic Predisposition to Disease](#)
[Lupus Erythematosus, Systemic](#)