



SZABO SCANDIC

Part of Europa Biosite

Produktinformation



Forschungsprodukte & Biochemikalien



Zellkultur & Verbrauchsmaterial



Diagnostik & molekulare Diagnostik



Laborgeräte & Service

Weitere Information auf den folgenden Seiten!
See the following pages for more information!



Lieferung & Zahlungsart

siehe unsere [Liefer- und Versandbedingungen](#)

Zuschläge

- Mindermengenzuschlag
- Trockeneiszuschlag
- Gefahrgutzuschlag
- Expressversand

SZABO-SCANDIC HandelsgmbH

Quellenstraße 110, A-1100 Wien

T. +43(0)1 489 3961-0

F. +43(0)1 489 3961-7

mail@szabo-scandic.com

www.szabo-scandic.com

[linkedin.com/company/szaboscandic](https://www.linkedin.com/company/szaboscandic) 

HLA-DOA 293T Cell Transient Overexpression Lysate(Denatured)

Catalog # : H00003111-T02

規格 : [100 uL]

[List All](#)

Specification

Transfected Cell Line: 293T

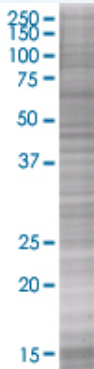
Plasmid: pCMV-HLA-DOA full-length

Host: Human

Theoretical MW (kDa): 27.6

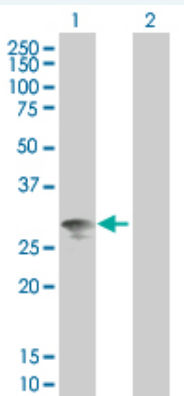
Quality Control Testing: Transient overexpression cell lysate was tested with Anti-HLA-DOA antibody (H00003111-B02) by Western Blots.

SDS-PAGE Gel



HLA-DOA transfected lysate

Western Blot



Lane 1: HLA-DOA transfected lysate (27.6 KDa).

Lane 2: Non-transfected lysate.

Storage Buffer: 1X Sample Buffer (50 mM Tris-HCl, 2% SDS, 10% glycerol, 300 mM 2-mercaptoethanol, 0.01% Bromophenol blue)

Storage Instruction: Store at -80°C. Aliquot to avoid repeated freezing and thawing.

MSDS:  [Download](#)

Applications

Application Image

Western Blot

Western Blot

Gene Information

Entrez GeneID: [3111](#)

GeneBank [NM_002119](#)
Accession#:

Protein [NP_002110](#)
Accession#:

Gene Name: HLA-DOA

Gene Alias: HLA-DNA,HLA-DZA,HLADZ

Gene Description: major histocompatibility complex, class II, DO alpha

Omim ID: [142930](#)

Gene Ontology: [Hyperlink](#)

Gene Summary: HLA-DOA belongs to the HLA class II alpha chain paralogues. HLA-DOA forms a heterodimer with HLA-DOB. The heterodimer, HLA-DO, is found in lysosomes in B cells and regulates HLA-DM-mediated peptide loading on MHC class II molecules. In comparison with classical HLA class II molecules, this gene exhibits very little sequence variation, especially at the protein level. [provided by RefSeq]

Other Designations: HLA-D0-alpha,MHC class II antigen,OTTHUMP00000029303,lymphocyte antigen,major histocompatibility complex, class II, DN alpha

Gene Pathway

[Allograft rejection](#) [Antigen processing and presentation](#) [Asthma](#)
[Autoimmune thyroid disease](#) [Cell adhesion molecules \(CAMs\)](#) [Graft-versus-host disease](#)
[Systemic lupus erythematosus](#) [Type I diabetes mellitus](#)

Related Disease

[Arthritis, Rheumatoid](#) [Cardiovascular Diseases](#) [Diabetes Mellitus, Type 1](#)
[Diabetes Mellitus, Type 2](#) [Edema](#) [Genetic Predisposition to Disease](#)
[Lupus Erythematosus, Systemic](#)

[服務條款](#) | [隱私權政策](#) | [著作及商標](#) | [網站地圖](#)

©2016 亞諾法生技股份有限公司 Abnova Corporation. 版權所有.