



# SZABO SCANDIC

Part of Europa Biosite

## Produktinformation



Forschungsprodukte & Biochemikalien



Zellkultur & Verbrauchsmaterial



Diagnostik & molekulare Diagnostik



Laborgeräte & Service

Weitere Information auf den folgenden Seiten!  
See the following pages for more information!



### Lieferung & Zahlungsart

siehe unsere [Liefer- und Versandbedingungen](#)

### Zuschläge

- Mindermengenzuschlag
- Trockeneiszuschlag
- Gefahrgutzuschlag
- Expressversand

### SZABO-SCANDIC HandelsgmbH

Quellenstraße 110, A-1100 Wien

T. +43(0)1 489 3961-0

F. +43(0)1 489 3961-7

[mail@szabo-scandic.com](mailto:mail@szabo-scandic.com)

[www.szabo-scandic.com](http://www.szabo-scandic.com)

[linkedin.com/company/szaboscandic](https://www.linkedin.com/company/szaboscandic) 

## HLA-DOB polyclonal antibody (A01)

Catalog # : H00003112-A01

規格 : [ 50 uL ]

List All

### Specification

**Product Description:** Mouse polyclonal antibody raised against a partial recombinant HLA-DOB.

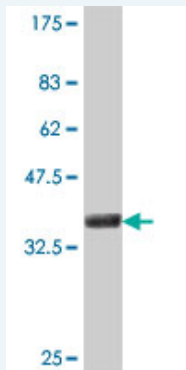
**Immunogen:** HLA-DOB (NP\_002111, 27 a.a. ~ 116 a.a) partial recombinant protein with GST tag.

**Sequence:** TDSPEDFVIQAKADCYFTNGTEKVQFVRFIFNLEEYVRFDSDVGMFVALTKLGQPD AEQWNSRLDLLERSRQAVDGVCRHNYRLGAPFT

**Host:** Mouse

**Reactivity:** Human

**Quality Control Testing:** Antibody Reactive Against Recombinant Protein.



Western Blot detection against Immunogen (36.01 KDa) .

**Storage Buffer:** 50 % glycerol

**Storage Instruction:** Store at -20°C or lower. Aliquot to avoid repeated freezing and thawing.

**MSDS:**  [Download](#)

**Datasheet:**  [Download](#)

### Applications

**Western Blot (Recombinant protein)**

 [Protocol Download](#)

**ELISA**

### Gene Information

**Entrez GeneID:** [3112](#)

**GeneBank Accession#:** [NM\\_002120](#)

**Protein** [NP\\_002111](#)

**Accession#:**

**Gene Name:** HLA-DOB

**Gene Alias:** DOB

**Gene Description:** major histocompatibility complex, class II, DO beta

**Omim ID:** [600629](#)

**Gene Ontology:** [Hyperlink](#)

**Gene Summary:** HLA-DOB belongs to the HLA class II beta chain paralogues. This class II molecule is a heterodimer consisting of an alpha (DOA) and a beta chain (DOB), both anchored in the membrane. It is located in intracellular vesicles. DO suppresses peptide loading of MHC class II molecules by inhibiting HLA-DM. Class II molecules are expressed in antigen presenting cells (APC: B lymphocytes, dendritic cells, macrophages). The beta chain is approximately 26-28 kDa and its gene contains 6 exons. Exon one encodes the leader peptide, exons 2 and 3 encode the two extracellular domains, exon 4 encodes the transmembrane domain and exon 5 encodes the cytoplasmic tail. [provided by RefSeq]

**Other Designations:** HLA class II histocompatibility antigen, DO beta chain, OTTHUMP00000029312, class II beta chain

#### Gene Pathway

[Allograft rejection](#) [Antigen processing and presentation](#) [Asthma](#)  
[Autoimmune thyroid disease](#) [Cell adhesion molecules \(CAMs\)](#) [Graft-versus-host disease](#)  
[Systemic lupus erythematosus](#) [Type I diabetes mellitus](#)

#### Related Disease

[Genetic Predisposition to Disease](#) [Lupus Erythematosus, Systemic](#) [Tobacco Use Disorder](#)

[服務條款](#) | [隱私權政策](#) | [著作及商標](#) | [網站地圖](#)

©2016 亞諾法生技股份有限公司 Abnova Corporation. 版權所有.