



SZABO SCANDIC

Part of Europa Biosite

Produktinformation



Forschungsprodukte & Biochemikalien



Zellkultur & Verbrauchsmaterial



Diagnostik & molekulare Diagnostik



Laborgeräte & Service

Weitere Information auf den folgenden Seiten!
See the following pages for more information!



Lieferung & Zahlungsart

siehe unsere [Liefer- und Versandbedingungen](#)

Zuschläge

- Mindermengenzuschlag
- Trockeneiszuschlag
- Gefahrgutzuschlag
- Expressversand

SZABO-SCANDIC HandelsgmbH

Quellenstraße 110, A-1100 Wien

T. +43(0)1 489 3961-0

F. +43(0)1 489 3961-7

mail@szabo-scandic.com

www.szabo-scandic.com

[linkedin.com/company/szaboscandic](https://www.linkedin.com/company/szaboscandic) 

HLA-DOB MaxPab mouse polyclonal antibody (B01) MaxPab®

Catalog # : H00003112-B01

規格 : [50 uL]

[List All](#)

Specification

Product Description: Mouse polyclonal antibody raised against a full-length human HLA-DOB protein.

Immunogen: HLA-DOB (NP_002111, 1 a.a. ~ 273 a.a) full-length human protein.

Sequence:
 MSGGWVPWVALLVNLRLDSSMTQGTDSPEDFVIQAKADCYFTNGTE
 KVQFVRFIFNLEEYVRFSDSDVGMFVALTKLGQPDAEQWNSRLDLLERS
 RQAVDGVCRHNYRLGAPFTVGRKVQPEVTYYPERTPLLHQHLLHCSV
 TGFYPGDIKIKWFLNGQEERAGVMSTGPIRNGDWTFQTVVMLEMTPEL
 GHVYTCLVDHSSLLSPVSVVEWRAQSEYSWRKMLSGIAAFLGLIFLLVGI
 VIQLRAQKGYVRTQMSGNEVSRAVLLPQSC

Host: Mouse

Reactivity: Human

Quality Control Testing: Antibody reactive against mammalian transfected lysate.

Storage Buffer: No additive

Storage Instruction: Store at -20°C or lower. Aliquot to avoid repeated freezing and thawing.

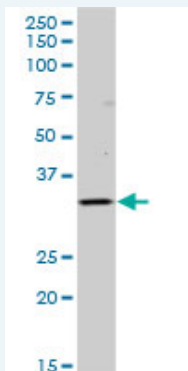
Note: For IHC and IF applications, antibody purification with Protein A will be needed prior to use.

MSDS:  [Download](#)

Datasheet:  [Download](#)

Applications

Western Blot (Tissue lysate)



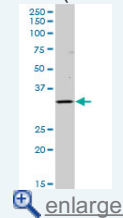
HLA-DOB MaxPab polyclonal antibody. Western Blot analysis of HLA-DOB expression in human liver.

 [Protocol Download](#)

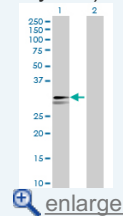
Western Blot (Transfected lysate)

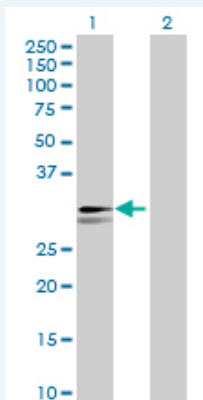
Application Image

Western Blot (Tissue lysate)



Western Blot (Transfected lysate)





Western Blot analysis of HLA-DOB expression in transfected 293T cell line ([H00003112-T01](#)) by HLA-DOB MaxPab polyclonal antibody.

Lane 1: HLA-DOB transfected lysate(30.03 KDa).
Lane 2: Non-transfected lysate.

 [Protocol Download](#)

Gene Information

Entrez GeneID: [3112](#)

GeneBank Accession#: [NM_002120](#)

Protein Accession#: [NP_002111](#)

Gene Name: HLA-DOB

Gene Alias: DOB

Gene Description: major histocompatibility complex, class II, DO beta

Omim ID: [600629](#)

Gene Ontology: [Hyperlink](#)

Gene Summary: HLA-DOB belongs to the HLA class II beta chain paralogues. This class II molecule is a heterodimer consisting of an alpha (DOA) and a beta chain (DOB), both anchored in the membrane. It is located in intracellular vesicles. DO suppresses peptide loading of MHC class II molecules by inhibiting HLA-DM. Class II molecules are expressed in antigen presenting cells (APC: B lymphocytes, dendritic cells, macrophages). The beta chain is approximately 26-28 kDa and its gene contains 6 exons. Exon one encodes the leader peptide, exons 2 and 3 encode the two extracellular domains, exon 4 encodes the transmembrane domain and exon 5 encodes the cytoplasmic tail. [provided by RefSeq]

Other Designations: HLA class II histocompatibility antigen, DO beta chain, OTTHUMP00000029312, class II beta chain

Gene Pathway

[Allograft rejection](#) [Antigen processing and presentation](#) [Asthma](#)
[Autoimmune thyroid disease](#) [Cell adhesion molecules \(CAMs\)](#) [Graft-versus-host disease](#)
[Systemic lupus erythematosus](#) [Type I diabetes mellitus](#)

Related Disease

[Genetic Predisposition to Disease](#) [Lupus Erythematosus](#). [Systemic](#) [Tobacco Use Disorder](#)

