



SZABO SCANDIC

Part of Europa Biosite

Produktinformation



Forschungsprodukte & Biochemikalien



Zellkultur & Verbrauchsmaterial



Diagnostik & molekulare Diagnostik



Laborgeräte & Service

Weitere Information auf den folgenden Seiten!
See the following pages for more information!



Lieferung & Zahlungsart

siehe unsere [Liefer- und Versandbedingungen](#)

Zuschläge

- Mindermengenzuschlag
- Trockeneiszuschlag
- Gefahrgutzuschlag
- Expressversand

SZABO-SCANDIC HandelsgmbH

Quellenstraße 110, A-1100 Wien

T. +43(0)1 489 3961-0

F. +43(0)1 489 3961-7

mail@szabo-scandic.com

www.szabo-scandic.com

[linkedin.com/company/szaboscandic](https://www.linkedin.com/company/szaboscandic) 

HLA-DPA1 (Human) Matched Antibody Pair

Catalog # : H00003113-AP21

規格 : [1 Set]

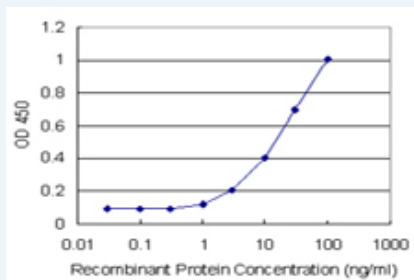
[List All](#)

Specification

Product Description: This antibody pair set comes with matched antibody pair to detect and quantify protein level of human HLA-DPA1.

Reactivity: Human

Quality Control Testing: Standard curve using recombinant protein (H00003113-P01) as an analyte.



Sandwich ELISA detection sensitivity ranging from 1 ng/ml to 100 ng/ml.

Supplied Product: Antibody pair set content:
 1. Capture antibody: rabbit MaxPab® affinity purified polyclonal anti-HLA-DPA1 (100 ug)
 2. Detection antibody: mouse purified polyclonal anti-HLA-DPA1 (20 ug)
 *Reagents are sufficient for at least 1-2 x 96 well plates using recommended protocols.

Storage Instruction: Store reagents of the antibody pair set at -20°C or lower. Please aliquot to avoid repeated freeze thaw cycle. Reagents should be returned to -20°C storage immediately after use.

MSDS:  [Download](#)

Applications

ELISA Pair (Recombinant protein)

 [Protocol Download](#)

Gene Information

Entrez GeneID: [3113](#)

Gene Name: HLA-DPA1

Gene Alias: HLA-DP1A,HLADP,HLASB

Gene Description: major histocompatibility complex, class II, DP alpha 1

Omim ID: [142880](#)

Gene Ontology: [Hyperlink](#)

Application Image

ELISA Pair (Recombinant protein)

Gene Summary: HLA-DPA1 belongs to the HLA class II alpha chain paralogues. This class II molecule is a heterodimer consisting of an alpha (DPA) and a beta (DPB) chain, both anchored in the membrane. It plays a central role in the immune system by presenting peptides derived from extracellular proteins. Class II molecules are expressed in antigen presenting cells (APC: B lymphocytes, dendritic cells, macrophages). The alpha chain is approximately 33-35 kDa and its gene contains 5 exons. Exon one encodes the leader peptide, exons 2 and 3 encode the two extracellular domains, exon 4 encodes the transmembrane domain and the cytoplasmic tail. Within the DP molecule both the alpha chain and the beta chain contain the polymorphisms specifying the peptide binding specificities, resulting in up to 4 different molecules. [provided by RefSeq]

Other Designations: HLA class II histocompatibility antigen, DP alpha chain, MHC class II HLA-DPA1 antigen, MHC class II antigen, OTTHUMP00000029066, OTTHUMP00000062983

Gene Pathway

[Allograft rejection](#) [Antigen processing and presentation](#) [Asthma](#)
[Autoimmune thyroid disease](#) [Cell adhesion molecules \(CAMs\)](#) [Graft-versus-host disease](#)
[Systemic lupus erythematosus](#) [Type I diabetes mellitus](#)

Related Disease

[Alveolitis](#), [Extrinsic Allergic Berylliosis](#) [Cardiomyopathy](#), [Dilated Cardiovascular Diseases](#)
[Cholestasis](#), [Intrahepatic Crohn's disease](#) [Diabetes Mellitus, Type 1](#)
[Diabetes Mellitus, Type 2](#) [Edema](#) [Encephalomyelitis](#), [Acute Disseminated](#)
[Genetic Predisposition to Disease](#) [Graft vs Host Disease](#) [Hematologic Neoplasms](#)
[Hepatitis B](#), [Chronic HIV Infections](#) [HIV Seropositivity](#) [Inflammatory Bowel Diseases](#)
[Leishmaniasis](#), [Cutaneous Leukemia](#)

... see more