



SZABO SCANDIC

Part of Europa Biosite

Produktinformation



Forschungsprodukte & Biochemikalien



Zellkultur & Verbrauchsmaterial



Diagnostik & molekulare Diagnostik



Laborgeräte & Service

Weitere Information auf den folgenden Seiten!
See the following pages for more information!



Lieferung & Zahlungsart

siehe unsere [Liefer- und Versandbedingungen](#)

Zuschläge

- Mindermengenzuschlag
- Trockeneiszuschlag
- Gefahrgutzuschlag
- Expressversand

SZABO-SCANDIC HandelsgmbH

Quellenstraße 110, A-1100 Wien

T. +43(0)1 489 3961-0

F. +43(0)1 489 3961-7

mail@szabo-scandic.com

www.szabo-scandic.com

[linkedin.com/company/szaboscandic](https://www.linkedin.com/company/szaboscandic) 



HLA-DPA1 purified MaxPab mouse polyclonal antibody (B01P) MaxPab®

Catalog # : H00003113-B01P

規格 : [50 ug]

[List All](#)

Specification

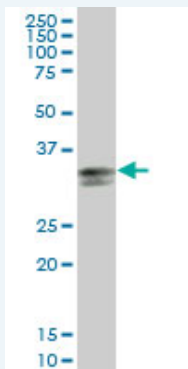
Product Description:	Mouse polyclonal antibody raised against a full-length human HLA-DPA1 protein.
Immunogen:	HLA-DPA1 (AAH09956.1, 1 a.a. ~ 260 a.a) full-length human protein.
Sequence:	MRPEDRMFHIRAVILRALSLAFLLSLRGAGAIKADHVSTYAAFVQTHRPT GEFMFEFDEDEQFYVDLDDKKTWHLEEFGRFSAEQGGLANAILNN NLNTLIQRSNHTQAANDPPEVTVFPKEPVELGQPNTLICHIDRFPPVLNV TWLCNGEPVTEGVAESLFLPRTDYSFHKFHLYLTFVPSAEDVYDCRVEH WGLDQPLLKHWEAQEPIQMPETTETVLCALGLVLGLVGIIVGTVLIKSLR SGHDPRAQGPL
Host:	Mouse
Reactivity:	Human
Quality Control Testing:	Antibody reactive against mammalian transfected lysate.
Storage Buffer:	In 1x PBS, pH 7.4
Storage Instruction:	Store at -20°C or lower. Aliquot to avoid repeated freezing and thawing.
MSDS:	 Download
Datasheet:	 Download

Publication Reference


1. [Gain in brain immunity in the oldest-old differentiates cognitively normal from demented individuals.](#)
Katsel P, Tan W, Haroutunian V. PLoS One. 2009 Oct 29;4(10):e7642.

Applications

Western Blot (Tissue lysate)

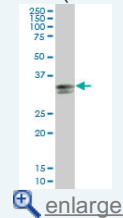


HLA-DPA1 MaxPab polyclonal antibody. Western Blot analysis of HLA-DPA1 expression in human spleen.

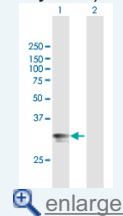
 [Protocol Download](#)

Application Image

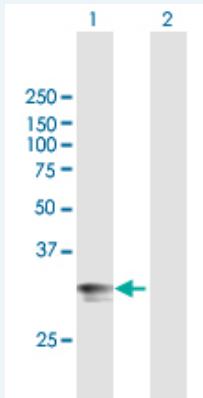
Western Blot (Tissue lysate)



Western Blot (Transfected lysate)



Western Blot (Transfected lysate)



Western Blot analysis of HLA-DPA1 expression in transfected 293T cell line ([H00003113-T01](#)) by HLA-DPA1 MaxPab polyclonal antibody.

Lane 1: HLA-DPA1 transfected lysate (28.6 kDa).

Lane 2: Non-transfected lysate.

 [Protocol Download](#)

Gene Information

Entrez GeneID: [3113](#)

GeneBank [BC009956](#)

Accession#:

Protein [AAH09956.1](#)

Accession#:

Gene Name: HLA-DPA1

Gene Alias: HLA-DP1A, HLADP, HLAB

Gene major histocompatibility complex, class II, DP alpha 1

Description:

Omim ID: [142880](#)

Gene Ontology: [Hyperlink](#)

Gene Summary: HLA-DPA1 belongs to the HLA class II alpha chain paralogues. This class II molecule is a heterodimer consisting of an alpha (DPA) and a beta (DPB) chain, both anchored in the membrane. It plays a central role in the immune system by presenting peptides derived from extracellular proteins. Class II molecules are expressed in antigen presenting cells (APC: B lymphocytes, dendritic cells, macrophages). The alpha chain is approximately 33-35 kDa and its gene contains 5 exons. Exon one encodes the leader peptide, exons 2 and 3 encode the two extracellular domains, exon 4 encodes the transmembrane domain and the cytoplasmic tail. Within the DP molecule both the alpha chain and the beta chain contain the polymorphisms specifying the peptide binding specificities, resulting in up to 4 different molecules. [provided by RefSeq]

Other Designations: HLA class II histocompatibility antigen, DP alpha chain, MHC class II HLA-DPA1 antigen, MHC class II antigen, OTTHUMP00000029066, OTTHUMP00000062983

Gene Pathway

[Allograft rejection](#) [Antigen processing and presentation](#) [Asthma](#)
[Autoimmune thyroid disease](#) [Cell adhesion molecules \(CAMs\)](#) [Graft-versus-host disease](#)
[Systemic lupus erythematosus](#) [Type I diabetes mellitus](#)

Related Disease

[Alveolitis](#), [Extrinsic Allergic Berylliosis](#) [Cardiomyopathy](#), [Dilated Cardiovascular Diseases](#)
[Cholestasis](#), [Intrahepatic Crohn's disease](#) [Diabetes Mellitus, Type 1](#)
[Diabetes Mellitus, Type 2](#) [Edema](#) [Encephalomyelitis](#), [Acute Disseminated](#)
[Genetic Predisposition to Disease](#) [Graft vs Host Disease](#) [Hematologic Neoplasms](#)
[Hepatitis B](#), [Chronic HIV Infections](#) [HIV Seropositivity](#) [Inflammatory Bowel Diseases](#)
[Leishmaniasis](#), [Cutaneous Leukemia](#)

[... see more](#)

[服務條款](#) | [隱私權政策](#) | [著作及商標](#) | [網站地圖](#)

©2016 亞諾法生技股份有限公司 Abnova Corporation. 版權所有.