



# SZABO SCANDIC

Part of Europa Biosite

## Produktinformation



Forschungsprodukte & Biochemikalien



Zellkultur & Verbrauchsmaterial



Diagnostik & molekulare Diagnostik



Laborgeräte & Service

Weitere Information auf den folgenden Seiten!  
See the following pages for more information!



### Lieferung & Zahlungsart

siehe unsere [Liefer- und Versandbedingungen](#)

### Zuschläge

- Mindermengenzuschlag
- Trockeneiszuschlag
- Gefahrgutzuschlag
- Expressversand

### SZABO-SCANDIC HandelsgmbH

Quellenstraße 110, A-1100 Wien

T. +43(0)1 489 3961-0

F. +43(0)1 489 3961-7

[mail@szabo-scandic.com](mailto:mail@szabo-scandic.com)

[www.szabo-scandic.com](http://www.szabo-scandic.com)

[linkedin.com/company/szaboscandic](https://www.linkedin.com/company/szaboscandic) 

## HLA-DPA1 monoclonal antibody (M03), clone 1E3

Catalog # : H00003113-M03

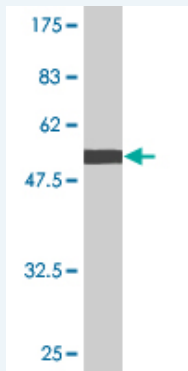
規格 : [ 100 ug ]

[List All](#)

### Specification

<b>Product Description:</b>	Mouse monoclonal antibody raised against a full-length recombinant HLA-DPA1.
<b>Immunogen:</b>	HLA-DPA1 (AAH09956, 1 a.a. ~ 260 a.a) full-length recombinant protein with GST tag. MW of the GST tag alone is 26 KDa.
<b>Sequence:</b>	MRPEDRMFHIRAVILRALSFLLSLRGAGAIKADHVSTYAAFVQTHRPT GEFMFEFDEDEQFYVDLDDKKEVWHLEEFGRAFSFEAQGGLANAILNN NLNTLIQRSNHTQAANDPPEVTVFPKEPVELGQPNTLICHIDRFFPPVLNV TWLCNGEPVTEGVAESLFLPRTDYSFHKFHYLTFVPSAEDVYDCRVEH WGLDQPLLKHWEAQEPIQMPETTETVLCALGLVGLVGIIVGTVLIKSLR SGHDPRAQGGL
<b>Host:</b>	Mouse
<b>Reactivity:</b>	Human
<b>Isotype:</b>	IgG2a Kappa

**Quality Control Testing:** Antibody Reactive Against Recombinant Protein.



Western Blot detection against Immunogen (54.34 KDa) .

**Storage Buffer:** In 1x PBS, pH 7.4

**Storage Instruction:** Store at -20°C or lower. Aliquot to avoid repeated freezing and thawing.

**MSDS:** [Download](#)

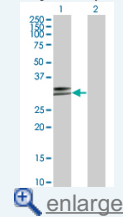
**Datasheet:** [Download](#)

### Applications

**Western Blot (Transfected lysate)**

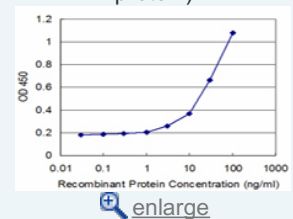
### Application Image

Western Blot (Transfected lysate)

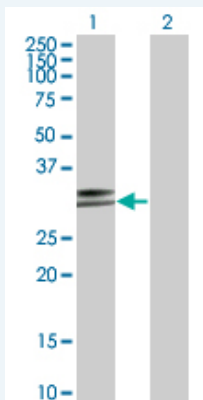


Western Blot (Recombinant protein)

Sandwich ELISA (Recombinant protein)



ELISA



Western Blot analysis of HLA-DPA1 expression in transfected 293T cell line by HLA-DPA1 monoclonal antibody (M03), clone 1E3.

Lane 1: HLA-DPA1 transfected lysate(29.3 KDa).

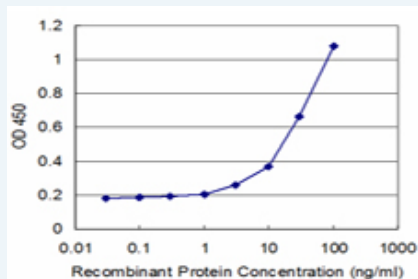
Lane 2: Non-transfected lysate.

[Protocol Download](#)

### Western Blot (Recombinant protein)

[Protocol Download](#)

### Sandwich ELISA (Recombinant protein)



Detection limit for recombinant GST tagged HLA-DPA1 is approximately 3ng/ml as a capture antibody.

[Protocol Download](#)

### ELISA

### Gene Information

Entrez GeneID: [3113](#)

GeneBank [BC009956](#)

Accession#:

Protein [AAH09956](#)

Accession#:

Gene Name: HLA-DPA1

Gene Alias: HLA-DP1A,HLADP,HLASB

Gene Description: major histocompatibility complex, class II, DP alpha 1

Description:

Omim ID: [142880](#)

Gene Ontology: [Hyperlink](#)

**Gene Summary:** HLA-DPA1 belongs to the HLA class II alpha chain paralogues. This class II molecule is a heterodimer consisting of an alpha (DPA) and a beta (DPB) chain, both anchored in the membrane. It plays a central role in the immune system by presenting peptides derived from extracellular proteins. Class II molecules are expressed in antigen

presenting cells (APC: B lymphocytes, dendritic cells, macrophages). The alpha chain is approximately 33-35 kDa and its gene contains 5 exons. Exon one encodes the leader peptide, exons 2 and 3 encode the two extracellular domains, exon 4 encodes the transmembrane domain and the cytoplasmic tail. Within the DP molecule both the alpha chain and the beta chain contain the polymorphisms specifying the peptide binding specificities, resulting in up to 4 different molecules. [provided by RefSeq]

---

**Other Designations:** HLA class II histocompatibility antigen, DP alpha chain, MHC class II HLA-DPA1 antigen, MHC class II antigen, OTTHUMP00000029066, OTTHUMP00000062983

---

### Gene Pathway

---

[Allograft rejection](#) [Antigen processing and presentation](#) [Asthma](#)  
[Autoimmune thyroid disease](#) [Cell adhesion molecules \(CAMs\)](#) [Graft-versus-host disease](#)  
[Systemic lupus erythematosus](#) [Type I diabetes mellitus](#)

### Related Disease

---

[Alveolitis](#), [Extrinsic Allergic Berylliosis](#) [Cardiomyopathy](#), [Dilated Cardiovascular Diseases](#)  
[Cholestasis](#), [Intrahepatic Crohn's disease](#) [Diabetes Mellitus, Type 1](#)  
[Diabetes Mellitus, Type 2](#) [Edema](#) [Encephalomyelitis](#), [Acute Disseminated](#)  
[Genetic Predisposition to Disease](#) [Graft vs Host Disease](#) [Hematologic Neoplasms](#)  
[Hepatitis B](#), [Chronic HIV Infections](#) [HIV Seropositivity](#) [Inflammatory Bowel Diseases](#)  
[Leishmaniasis](#), [Cutaneous Leukemia](#)

... see more

---

[服務條款](#) | [隱私權政策](#) | [著作及商標](#) | [網站地圖](#)

©2016 亞諾法生技股份有限公司 Abnova Corporation. 版權所有.