



# SZABO SCANDIC

Part of Europa Biosite

## Produktinformation



Forschungsprodukte & Biochemikalien



Zellkultur & Verbrauchsmaterial



Diagnostik & molekulare Diagnostik



Laborgeräte & Service

Weitere Information auf den folgenden Seiten!  
See the following pages for more information!



### Lieferung & Zahlungsart

siehe unsere [Liefer- und Versandbedingungen](#)

### Zuschläge

- Mindermengenzuschlag
- Trockeneiszuschlag
- Gefahrgutzuschlag
- Expressversand

### SZABO-SCANDIC HandelsgmbH

Quellenstraße 110, A-1100 Wien

T. +43(0)1 489 3961-0

F. +43(0)1 489 3961-7

[mail@szabo-scandic.com](mailto:mail@szabo-scandic.com)

[www.szabo-scandic.com](http://www.szabo-scandic.com)

[linkedin.com/company/szaboscandic](https://www.linkedin.com/company/szaboscandic) 

## HLA-DPA1 293T Cell Transient Overexpression Lysate(Denatured)

Catalog # : H00003113-T02

規格 : [ 100 uL ]

[List All](#)

### Specification

**Transfected Cell Line:** 293T

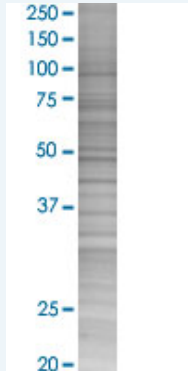
**Plasmid:** pCMV-HLA-DPA1 full-length

**Host:** Human

**Theoretical MW (kDa):** 29.3

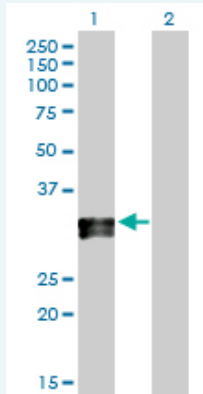
**Quality Control Testing:** Transient overexpression cell lysate was tested with Anti-HLA-DPA1 antibody ([H00003113-D01P](#)) by Western Blots.

#### SDS-PAGE Gel



HLA-DPA1 transfected lysate.

#### Western Blot



Lane 1: HLA-DPA1 transfected lysate ( 29.30 KDa)

Lane 2: Non-transfected lysate.

**Storage Buffer:** 1X Sample Buffer (50 mM Tris-HCl, 2% SDS, 10% glycerol, 300 mM 2-mercaptoethanol, 0.01% Bromophenol blue)

**Storage Instruction:** Store at -80°C. Aliquot to avoid repeated freezing and thawing.

**MSDS:**  [Download](#)

### Applications

### Application Image

Western Blot

## Western Blot

### Gene Information

Entrez GeneID: [3113](#)

GeneBank [BC009956](#)  
Accession#:

Protein [AAH09956.1](#)  
Accession#:

Gene Name: HLA-DPA1

Gene Alias: HLA-DP1A,HLADP,HLASB

Gene Description: major histocompatibility complex, class II, DP alpha 1

Omim ID: [142880](#)

Gene Ontology: [Hyperlink](#)

**Gene Summary:** HLA-DPA1 belongs to the HLA class II alpha chain paralogues. This class II molecule is a heterodimer consisting of an alpha (DPA) and a beta (DPB) chain, both anchored in the membrane. It plays a central role in the immune system by presenting peptides derived from extracellular proteins. Class II molecules are expressed in antigen presenting cells (APC: B lymphocytes, dendritic cells, macrophages). The alpha chain is approximately 33-35 kDa and its gene contains 5 exons. Exon one encodes the leader peptide, exons 2 and 3 encode the two extracellular domains, exon 4 encodes the transmembrane domain and the cytoplasmic tail. Within the DP molecule both the alpha chain and the beta chain contain the polymorphisms specifying the peptide binding specificities, resulting in up to 4 different molecules. [provided by RefSeq]

**Other Designations:** HLA class II histocompatibility antigen, DP alpha chain,MHC class II HLA-DPA1 antigen,MHC class II antigen,OTTHUMP00000029066,OTTHUMP00000062983

### Gene Pathway

[Allograft rejection](#) [Antigen processing and presentation](#) [Asthma](#)  
[Autoimmune thyroid disease](#) [Cell adhesion molecules \(CAMs\)](#) [Graft-versus-host disease](#)  
[Systemic lupus erythematosus](#) [Type I diabetes mellitus](#)

### Related Disease

[Alveolitis](#), [Extrinsic Allergic Berylliosis](#) [Cardiomyopathy](#), [Dilated Cardiovascular Diseases](#)  
[Cholestasis](#), [Intrahepatic Crohn's disease](#) [Diabetes Mellitus, Type 1](#)  
[Diabetes Mellitus, Type 2](#) [Edema](#) [Encephalomyelitis](#), [Acute Disseminated](#)  
[Genetic Predisposition to Disease](#) [Graft vs Host Disease](#) [Hematologic Neoplasms](#)  
[Hepatitis B](#), [Chronic HIV Infections](#) [HIV Seropositivity](#) [Inflammatory Bowel Diseases](#)  
[Leishmaniasis](#), [Cutaneous Leukemia](#)

... see more