



# SZABO SCANDIC

Part of Europa Biosite

## Produktinformation



Forschungsprodukte & Biochemikalien



Zellkultur & Verbrauchsmaterial



Diagnostik & molekulare Diagnostik



Laborgeräte & Service

Weitere Information auf den folgenden Seiten!  
See the following pages for more information!



### Lieferung & Zahlungsart

siehe unsere [Liefer- und Versandbedingungen](#)

### Zuschläge

- Mindermengenzuschlag
- Trockeneiszuschlag
- Gefahrgutzuschlag
- Expressversand

### SZABO-SCANDIC HandelsgmbH

Quellenstraße 110, A-1100 Wien

T. +43(0)1 489 3961-0

F. +43(0)1 489 3961-7

[mail@szabo-scandic.com](mailto:mail@szabo-scandic.com)

[www.szabo-scandic.com](http://www.szabo-scandic.com)

[linkedin.com/company/szaboscandic](https://www.linkedin.com/company/szaboscandic) 

## HLA-DPB1 (Human) IP-WB Antibody Pair

Catalog # : H00003115-PW1

規格 : [ 1 Set ]

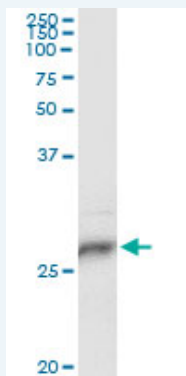
[List All](#)

### Specification

**Product Description:** This IP-WB antibody pair set comes with one antibody for immunoprecipitation and another to detect the precipitated protein in western blot.

**Reactivity:** Human

**Quality Control Testing:** Immunoprecipitation-Western Blot (IP-WB)



Immunoprecipitation of HLA-DPB1 transfected lysate using mouse monoclonal anti-HLA-DPB1 and Protein A Magnetic Bead ([U0007](#)), and immunoblotted with mouse monoclonal anti-HLA-DPB1.

**Supplied Product:** Antibody pair set content:  
1. Antibody pair for IP: mouse monoclonal anti-HLA-DPB1 (300 ug)  
2. Antibody pair for WB: mouse monoclonal anti-HLA-DPB1 (50 ug)

**Storage Instruction:** Store reagents of the antibody pair set at -20°C or lower. Please aliquot to avoid repeated freeze thaw cycle. Reagents should be returned to -20°C storage immediately after use.

**MSDS:**  [Download](#)

### Applications

**Immunoprecipitation-Western Blot**

 [Protocol Download](#)

### Gene Information

**Entrez GeneID:** [3115](#)

**Gene Name:** HLA-DPB1

**Gene Alias:** DPB1,HLA-DP1B

**Gene Description:** major histocompatibility complex, class II, DP beta 1

**Omim ID:** [142858](#)

**Gene Ontology:** [Hyperlink](#)

### Application Image

Immunoprecipitation-Western Blot

**Gene Summary:** HLA-DPB belongs to the HLA class II beta chain paralogues. This class II molecule is a heterodimer consisting of an alpha (DPA) and a beta chain (DPB), both anchored in the membrane. It plays a central role in the immune system by presenting peptides derived from extracellular proteins. Class II molecules are expressed in antigen presenting cells (APC: B lymphocytes, dendritic cells, macrophages). The beta chain is approximately 26-28 kDa and its gene contains 6 exons. Exon one encodes the leader peptide, exons 2 and 3 encode the two extracellular domains, exon 4 encodes the transmembrane domain and exon 5 encodes the cytoplasmic tail. Within the DP molecule both the alpha chain and the beta chain contain the polymorphisms specifying the peptide binding specificities, resulting in up to 4 different molecules. [provided by RefSeq]

**Other Designations:** HLA DP14-beta chain,HLA-DP histocompatibility type, beta-1 subunit,MHC HLA DPB1,MHC class II HLA-DP-beta,MHC class II HLA-DP-beta-1,MHC class II HLA-DRB1,MHC class II antigen DP beta 1 chain,MHC class II antigen DPbeta1,MHC class II antigen beta chain,OTT

### Gene Pathway

[Allograft rejection](#) [Antigen processing and presentation](#) [Asthma](#)  
[Autoimmune thyroid disease](#) [Cell adhesion molecules \(CAMs\)](#) [Graft-versus-host disease](#)  
[Systemic lupus erythematosus](#) [Type I diabetes mellitus](#)

### Related Disease

[Acute Disease](#) [Antiphospholipid Syndrome](#) [Arthritis, Juvenile Rheumatoid](#)  
[Arthritis, Rheumatoid](#) [Asthma](#) [Asthma](#) [Autoimmune Diseases](#) [Berylliosis](#) [Biliary Atresia](#)  
[Breast cancer](#) [Breast Neoplasms](#) [Calcinosis](#) [Carcinoma](#) [Carcinoma, Hepatocellular](#)  
[Carcinoma, Squamous Cell](#) [Cardiomyopathy, Dilated](#) [Cardiomyopathy, Hypertrophic](#)  
[Cardiovascular Diseases](#) [Chronic Disease](#)

... see more