



SZABO SCANDIC

Part of Europa Biosite

Produktinformation



Forschungsprodukte & Biochemikalien



Zellkultur & Verbrauchsmaterial



Diagnostik & molekulare Diagnostik



Laborgeräte & Service

Weitere Information auf den folgenden Seiten!
See the following pages for more information!



Lieferung & Zahlungsart

siehe unsere [Liefer- und Versandbedingungen](#)

Zuschläge

- Mindermengenzuschlag
- Trockeneiszuschlag
- Gefahrgutzuschlag
- Expressversand

SZABO-SCANDIC HandelsgmbH

Quellenstraße 110, A-1100 Wien

T. +43(0)1 489 3961-0

F. +43(0)1 489 3961-7

mail@szabo-scandic.com

www.szabo-scandic.com

[linkedin.com/company/szaboscandic](https://www.linkedin.com/company/szaboscandic) 

HLA-DPB1 293T Cell Transient Overexpression Lysate(Denatured)

Catalog # : H00003115-T01

規格 : [100 uL]

[List All](#)

Specification

Transfected Cell Line: 293T

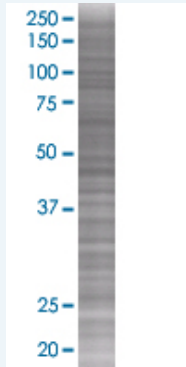
Plasmid: pCMV-HLA-DPB1 full-length

Host: Human

Theoretical MW (kDa): 29.2

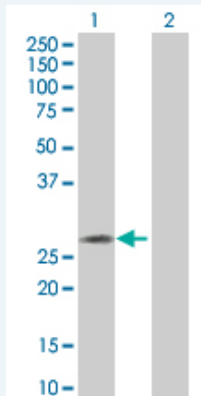
Quality Control Testing: Transient overexpression cell lysate was tested with Anti-HLA-DPB1 antibody ([H00003115-B01](#)) by Western Blots.

SDS-PAGE Gel



HLA-DPB1 transfected lysate

Western Blot



Lane 1: HLA-DPB1 transfected lysate (29.2 KDa).

Lane 2: Non-transfected lysate.

Storage Buffer: 1X Sample Buffer (50 mM Tris-HCl, 2% SDS, 10% glycerol, 300 mM 2-mercaptoethanol, 0.01% Bromophenol blue)

Storage Instruction: Store at -80°C. Aliquot to avoid repeated freezing and thawing.

MSDS:  [Download](#)

Applications

Western Blot

Gene Information

Entrez GeneID: [3115](#)

GeneBank [NM_002121](#)
Accession#:

Protein [NP_002112](#)
Accession#:

Gene Name: HLA-DPB1

Gene Alias: DPB1,HLA-DP1B

Gene Description: major histocompatibility complex, class II, DP beta 1

Omim ID: [142858](#)

Gene Ontology: [Hyperlink](#)

Gene Summary: HLA-DPB belongs to the HLA class II beta chain paralogues. This class II molecule is a heterodimer consisting of an alpha (DPA) and a beta chain (DPB), both anchored in the membrane. It plays a central role in the immune system by presenting peptides derived from extracellular proteins. Class II molecules are expressed in antigen presenting cells (APC: B lymphocytes, dendritic cells, macrophages). The beta chain is approximately 26-28 kDa and its gene contains 6 exons. Exon one encodes the leader peptide, exons 2 and 3 encode the two extracellular domains, exon 4 encodes the transmembrane domain and exon 5 encodes the cytoplasmic tail. Within the DP molecule both the alpha chain and the beta chain contain the polymorphisms specifying the peptide binding specificities, resulting in up to 4 different molecules. [provided by RefSeq]

Other Designations: HLA DP14-beta chain,HLA-DP histocompatibility type, beta-1 subunit,MHC HLA DPB1,MHC class II HLA-DP-beta,MHC class II HLA-DP-beta-1,MHC class II HLA-DRB1,MHC class II antigen DP beta 1 chain,MHC class II antigen DPbeta1,MHC class II antigen beta chain,OTT

Gene Pathway

[Allograft rejection](#) [Antigen processing and presentation](#) [Asthma](#)
[Autoimmune thyroid disease](#) [Cell adhesion molecules \(CAMs\)](#) [Graft-versus-host disease](#)
[Systemic lupus erythematosus](#) [Type I diabetes mellitus](#)

Related Disease

[Acute Disease](#) [Antiphospholipid Syndrome](#) [Arthritis, Juvenile Rheumatoid](#)
[Arthritis, Rheumatoid](#) [Asthma](#) [Autoimmune Diseases](#) [Berylliosis](#) [Biliary Atresia](#)
[Breast cancer](#) [Breast Neoplasms](#) [Calcinosis](#) [Carcinoma](#) [Carcinoma, Hepatocellular](#)
[Carcinoma, Squamous Cell](#) [Cardiomyopathy, Dilated](#) [Cardiomyopathy, Hypertrophic](#)
[Cardiovascular Diseases](#) [Chronic Disease](#)

... see more