



SZABO SCANDIC

Part of Europa Biosite

Produktinformation



Forschungsprodukte & Biochemikalien



Zellkultur & Verbrauchsmaterial



Diagnostik & molekulare Diagnostik



Laborgeräte & Service

Weitere Information auf den folgenden Seiten!
See the following pages for more information!



Lieferung & Zahlungsart

siehe unsere [Liefer- und Versandbedingungen](#)

Zuschläge

- Mindermengenzuschlag
- Trockeneiszuschlag
- Gefahrgutzuschlag
- Expressversand

SZABO-SCANDIC HandelsgmbH

Quellenstraße 110, A-1100 Wien

T. +43(0)1 489 3961-0

F. +43(0)1 489 3961-7

mail@szabo-scandic.com

www.szabo-scandic.com

[linkedin.com/company/szaboscandic](https://www.linkedin.com/company/szaboscandic) 

HLA-DQA1 monoclonal antibody (M01), clone 1A3

產品編號 # : H00003117-M01

規格 : [100 ug]

[List All](#)

Specification

Product Description: Mouse monoclonal antibody raised against a partial recombinant HLA-DQA1.

Immunogen: HLA-DQA1 (NP_002113.2, 24 a.a. ~ 110 a.a) partial recombinant protein with GST tag. MW of the GST tag alone is 26 KDa.

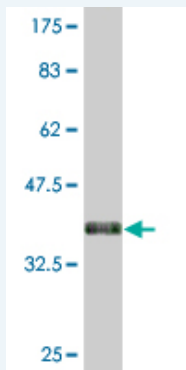
Sequence: EDIVADHVASCNVLYQFYGPSGQYTHEFDGDEEFYVDLERKETAWRWPEFSKFGGFDPPQALRNMAVAKHNLNIMIKRYNSTAATN

Host: Mouse

Reactivity: Human

Isotype: IgG2a Kappa

Quality Control Testing: Antibody Reactive Against Recombinant Protein.



Western Blot detection against Immunogen (35.31 KDa) .

Storage Buffer: In 1x PBS, pH 7.4

Storage Instruction: Store at -20°C or lower. Aliquot to avoid repeated freezing and thawing.

MSDS: [Download](#)

Datasheet: [Download](#)

Applications

Western Blot (Recombinant protein)

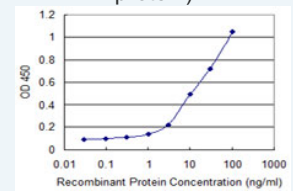
[Protocol Download](#)

Sandwich ELISA (Recombinant protein)

Application Image

Western Blot (Recombinant protein)

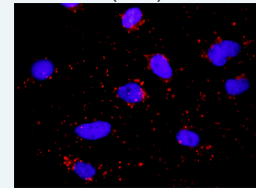
Sandwich ELISA (Recombinant protein)



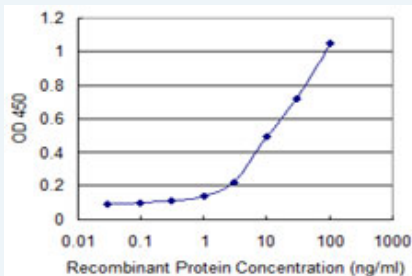
[enlarge](#)

ELISA

In situ Proximity Ligation Assay (Cell)



[enlarge](#)

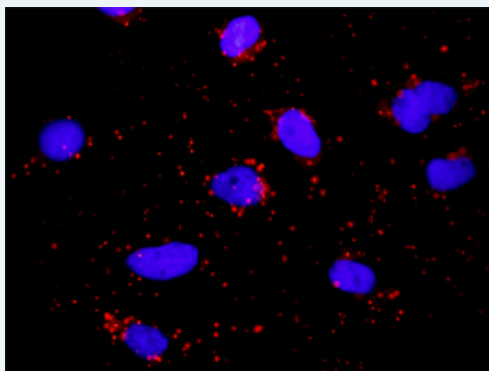


Detection limit for recombinant GST tagged HLA-DQA1 is 0.3 ng/ml as a capture antibody.

[Protocol Download](#)

ELISA

In situ Proximity Ligation Assay (Cell)



Proximity Ligation Analysis of protein-protein interactions between CD74 and HLA-DQA1. HeLa cells were stained with anti-CD74 rabbit purified polyclonal 1:1200 and anti-HLA-DQA1 mouse monoclonal antibody 1:50. Each red dot represents the detection of protein-protein interaction complex, and nuclei were counterstained with DAPI (blue).

Gene Information

Entrez GeneID: [3117](#)

GeneBank [NM_002122](#)
Accession#:

Protein [NP_002113.2](#)
Accession#:

Gene Name: HLA-DQA1

Gene Alias: CD, CELIAC1, DQ-A1, FLJ27088, FLJ27328, GSE, HLA-DQA, MGC149527

Gene Description: major histocompatibility complex, class II, DQ alpha 1

Omim ID: [146880](#), [212750](#)

Gene Ontology: [Hyperlink](#)

Gene Summary: HLA-DQA1 belongs to the HLA class II alpha chain paralogues. The class II molecule is a heterodimer consisting of an alpha (DQA) and a beta chain (DQB), both anchored in the membrane. It plays a central role in the immune system by presenting peptides derived from extracellular proteins. Class II molecules are expressed in antigen presenting cells (APC: B Lymphocytes, dendritic cells, macrophages). The alpha chain is approximately 33-35 kDa. It is encoded by 5 exons; exon 1 encodes the leader peptide, exons 2 and 3 encode the two extracellular domains, and exon 4 encodes the transmembrane domain and the cytoplasmic tail. Within the DQ molecule both the alpha chain and the beta chain contain the polymorphisms specifying the peptide binding specificities, resulting in up to four different molecules. Typing for these polymorphisms is routinely done for bone marrow

transplantation. [provided by RefSeq]

Other Designations: [Gluten-sensitive enteropathy \(celiac disease\)](#),[MHC HLA-DQ alpha](#),[MHC class II HLA-D alpha glycoprotein](#),[MHC class II HLA-DQ-alpha-1](#),[MHC class II antigen](#),[MHC class II surface glycoprotein](#),[OTTHUMP00000029141](#),[OTTHUMP00000176885](#),[OTTHUMP00000178551](#),[OTTHUMP0000017](#)

Gene Pathway

[Allograft rejection](#) [Antigen processing and presentation](#) [Asthma](#)
[Autoimmune thyroid disease](#) [Cell adhesion molecules \(CAMs\)](#) [Graft-versus-host disease](#)
[Systemic lupus erythematosus](#) [Type I diabetes mellitus](#)

Related Disease

[Abortion, Habitual](#) [Abortion, Spontaneous](#) [Acute Disease](#) [Addison Disease](#)
[Adenocarcinoma](#) [Adenocarcinoma, Follicular](#) [Adrenal Hyperplasia, Congenital](#)
[Adrenal hyperplasia, congenital](#) [Adrenal Insufficiency](#) [Agricultural Workers' Diseases](#)
[Alopecia](#) [Alopecia Areata](#) [Antiphospholipid Syndrome](#) [Aortic Aneurysm](#), [Abdominal](#) [Arthritis](#)
[Arthritis, Juvenile Rheumatoid](#) [Arthritis, Psoriatic](#) [Arthritis, Rheumatoid](#) [Asthma](#)

... see more

[服務條款](#) | [隱私權政策](#) | [著作及商標](#) | [網站地圖](#)

©2016 亞諾法生技股份有限公司 Abnova Corporation. 版權所有.