



# SZABO SCANDIC

Part of Europa Biosite

## Produktinformation



Forschungsprodukte & Biochemikalien



Zellkultur & Verbrauchsmaterial



Diagnostik & molekulare Diagnostik



Laborgeräte & Service

Weitere Information auf den folgenden Seiten!  
See the following pages for more information!



### Lieferung & Zahlungsart

siehe unsere [Liefer- und Versandbedingungen](#)

### Zuschläge

- Mindermengenzuschlag
- Trockeneiszuschlag
- Gefahrgutzuschlag
- Expressversand

### SZABO-SCANDIC HandelsgmbH

Quellenstraße 110, A-1100 Wien

T. +43(0)1 489 3961-0

F. +43(0)1 489 3961-7

[mail@szabo-scandic.com](mailto:mail@szabo-scandic.com)

[www.szabo-scandic.com](http://www.szabo-scandic.com)

[linkedin.com/company/szaboscandic](https://www.linkedin.com/company/szaboscandic) 

# HLA-DQB1 purified MaxPab mouse polyclonal antibody (B01P) MaxPab®

Catalog # : H00003119-B01P

規格 : [ 50 ug ]

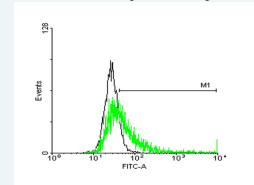
List All

## Specification

<b>Product Description:</b>	Mouse polyclonal antibody raised against a full-length human HLA-DQB1 protein.
<b>Immunogen:</b>	HLA-DQB1 (AAH12106.1, 1 a.a. ~ 261 a.a) full-length human protein.
<b>Sequence:</b>	MSWKKALRIPGGLRVATVTLMLAMLSTPVAEGRDSPEDFVYQFKGMCY FTNGTERVRLVTRYIYNREEYARFSDSDGVYRAVTPLGPPAAEYWNSQK EVLERTRAEALDTCRHNYQLELRITLQRRVEPTVTISPSRTEALNHHNLL VCSVTDIFYPAQIKVRWFRNDQEETGGVSTPLIRNGDWTFQILVMLEMT PQRGDVYTCHVEHPSLQNPIVEWRAQSESAQSKMLSGIGGFVLGLIFLG LGLIIHRSQKGLLH
<b>Host:</b>	Mouse
<b>Reactivity:</b>	Human
<b>Quality Control Testing:</b>	Antibody reactive against mammalian transfected lysate.
<b>Storage Buffer:</b>	In 1x PBS, pH 7.4
<b>Storage Instruction:</b>	Store at -20°C or lower. Aliquot to avoid repeated freezing and thawing.
<b>MSDS:</b>	<a href="#">Download</a>
<b>Datasheet:</b>	<a href="#">Download</a>

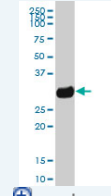
## Application Image

### Flow Cytometry



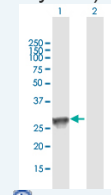
[enlarge](#)

### Western Blot (Tissue lysate)



[enlarge](#)

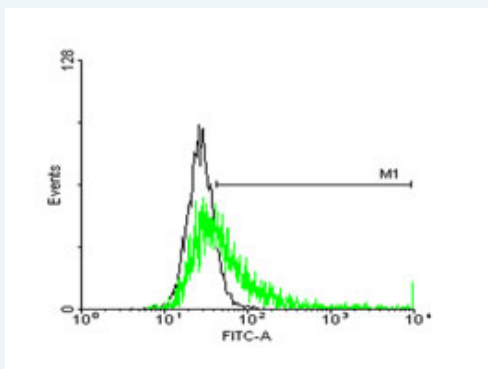
### Western Blot (Transfected lysate)



[enlarge](#)

## Applications

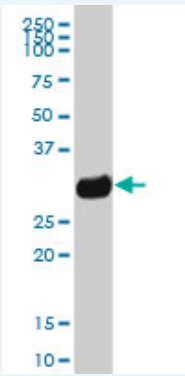
### Flow Cytometry



[enlarge this image](#)

FACS analysis of negative control 293 cells (Black) and HLA-DQB1 expressing 293 cells (Green) using HLA-DQB1 purified MaxPab mouse polyclonal antibody.

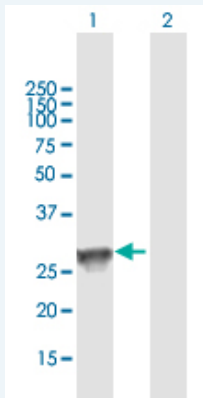
### Western Blot (Tissue lysate)



HLA-DQB1 MaxPab polyclonal antibody. Western Blot analysis of HLA-DQB1 expression in human pancreas.

 [Protocol Download](#)

#### Western Blot (Transfected lysate)



Western Blot analysis of HLA-DQB1 expression in transfected 293T cell line ([H00003119-T01](#)) by HLA-DQB1 MaxPab polyclonal antibody.

Lane 1: HLA-DQB1 transfected lysate(28.71 KDa).

Lane 2: Non-transfected lysate.

 [Protocol Download](#)

#### Gene Information

**Entrez GeneID:** [3119](#)

**GeneBank** [BC012106](#)

**Accession#:**

**Protein** [AAH12106.1](#)

**Accession#:**

**Gene Name:** HLA-DQB1

**Gene Alias:** CELIAC1,HLA-DQB,IDDM1

**Gene** major histocompatibility complex, class II, DQ beta 1

**Description:**

**Omim ID:** [123400](#), [126200](#), [222100](#), [604305](#)

**Gene Ontology:** [Hyperlink](#)

**Gene Summary:** HLA-DQB1 belongs to the HLA class II beta chain paralogues. This class II molecule is a heterodimer consisting of an alpha (DQA) and a beta chain (DQB), both anchored in the membrane. It plays a central role in the immune system by presenting peptides derived from extracellular proteins. Class II molecules are expressed in antigen presenting cells (APC: B lymphocytes, dendritic cells, macrophages). The beta chain is approximately 26-28 kDa and it contains 6 exons. Exon one encodes the leader peptide, exons 2 and 3 encode the two

extracellular domains, exon 4 encodes the transmembrane domain and exon 5 encodes the cytoplasmic tail. Within the DQ molecule both the alpha chain and the beta chain contain the polymorphisms specifying the peptide binding specificities, resulting in up to 4 different molecules. Typing for these polymorphisms is routinely done for bone marrow transplantation. [provided by RefSeq]

**Other Designations:** MHC DQ beta, MHC class II DQ beta chain, MHC class II HLA-DQ beta glycoprotein, MHC class II antigen DQB1, MHC class II antigen HLA-DQ-beta-1, MHC class2 antigen, OTTHUMP00000178570, lymphocyte antigen, major histocompatibility complex class II beta

### Gene Pathway

[Allograft rejection](#) [Antigen processing and presentation](#) [Asthma](#)  
[Autoimmune thyroid disease](#) [Cell adhesion molecules \(CAMs\)](#) [Graft-versus-host disease](#)  
[Systemic lupus erythematosus](#) [Type I diabetes mellitus](#)

### Related Disease

[Abortion, Habitual](#) [Abortion, Spontaneous](#) [Abruptio Placentae](#)  
[Acquired Immunodeficiency Syndrome](#) [Acute Disease](#) [Addison Disease](#) [Adenocarcinoma](#)  
[Adenocarcinoma, Follicular](#) [Adrenal Insufficiency](#) [Aggressive Periodontitis](#)  
[Agricultural Workers' Diseases](#) [AIDS-Related Opportunistic Infections](#) [Alopecia](#)  
[Alopecia Areata](#) [Alveolar Bone Loss](#) [Anemia](#) [Anemia, Aplastic](#) [Anemia, Sickle Cell](#)  
[Anemia, sickle cell](#)

... see more

[服務條款](#) | [隱私權政策](#) | [著作及商標](#) | [網站地圖](#)

©2016 亞諾法生技股份有限公司 Abnova Corporation. 版權所有.