



SZABO SCANDIC

Part of Europa Biosite

Produktinformation



Forschungsprodukte & Biochemikalien



Zellkultur & Verbrauchsmaterial



Diagnostik & molekulare Diagnostik



Laborgeräte & Service

Weitere Information auf den folgenden Seiten!
See the following pages for more information!



Lieferung & Zahlungsart

siehe unsere [Liefer- und Versandbedingungen](#)

Zuschläge

- Mindermengenzuschlag
- Trockeneiszuschlag
- Gefahrgutzuschlag
- Expressversand

SZABO-SCANDIC HandelsgmbH

Quellenstraße 110, A-1100 Wien

T. +43(0)1 489 3961-0

F. +43(0)1 489 3961-7

mail@szabo-scandic.com

www.szabo-scandic.com

[linkedin.com/company/szaboscandic](https://www.linkedin.com/company/szaboscandic) 

HLA-DQB1 monoclonal antibody (M02), clone 1G6

Catalog # : H00003119-M02

規格 : [100 ug]

[List All](#)

Specification

Product Description: Mouse monoclonal antibody raised against a partial recombinant HLA-DQB1.

Immunogen: HLA-DQB1 (AAH12106.1, 129 a.a. ~ 217 a.a) partial recombinant protein with GST tag. MW of the GST tag alone is 26 KDa.

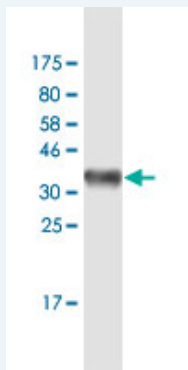
Sequence: PTVTISPSRTEALNHHNLLVCSVTDVFYPAQIKVRWFRNDQEETGWSTPLIRNGDWTFQILVMLEMTQRQGDVYTCHVEHPSLQNPPII

Host: Mouse

Reactivity: Human

Isotype: IgG2b Kappa

Quality Control Testing: Antibody Reactive Against Recombinant Protein.



Western Blot detection against Immunogen (35.42 KDa) .

Storage Buffer: In 1x PBS, pH 7.4

Storage Instruction: Store at -20°C or lower. Aliquot to avoid repeated freezing and thawing.

MSDS: [Download](#)

Datasheet: [Download](#)

Applications

Western Blot (Recombinant protein)

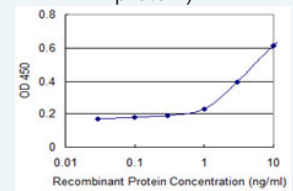
[Protocol Download](#)

Sandwich ELISA (Recombinant protein)

Application Image

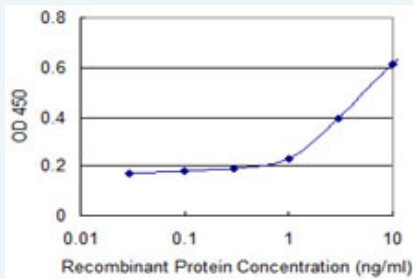
Western Blot (Recombinant protein)

Sandwich ELISA (Recombinant protein)



[enlarge](#)

ELISA



Detection limit for recombinant GST tagged HLA-DQB1 is 0.3 ng/ml as a capture antibody.

 [Protocol Download](#)

ELISA

Gene Information

Entrez GeneID: [3119](#)

GeneBank [BC012106.1](#)

Accession#:

Protein [AAH12106.1](#)

Accession#:

Gene Name: HLA-DQB1

Gene Alias: CELIAC1,HLA-DQB,IDDM1

Gene Description: major histocompatibility complex, class II, DQ beta 1

Omim ID: [123400](#), [126200](#), [222100](#), [604305](#)

Gene Ontology: [Hyperlink](#)

Gene Summary: HLA-DQB1 belongs to the HLA class II beta chain paralogues. This class II molecule is a heterodimer consisting of an alpha (DQA) and a beta chain (DQB), both anchored in the membrane. It plays a central role in the immune system by presenting peptides derived from extracellular proteins. Class II molecules are expressed in antigen presenting cells (APC: B lymphocytes, dendritic cells, macrophages). The beta chain is approximately 26-28 kDa and it contains 6 exons. Exon one encodes the leader peptide, exons 2 and 3 encode the two extracellular domains, exon 4 encodes the transmembrane domain and exon 5 encodes the cytoplasmic tail. Within the DQ molecule both the alpha chain and the beta chain contain the polymorphisms specifying the peptide binding specificities, resulting in up to 4 different molecules. Typing for these polymorphisms is routinely done for bone marrow transplantation. [provided by RefSeq]

Other Designations: MHC DQ beta,MHC class II DQ beta chain,MHC class II HLA-DQ beta glycoprotein,MHC class II antigen DQB1,MHC class II antigen HLA-DQ-beta-1,MHC class2 antigen,OTTHUMP00000178570,lymphocyte antigen,major histocompatibility complex class II beta

Gene Pathway

[Allograft rejection](#) [Antigen processing and presentation](#) [Asthma](#)
[Autoimmune thyroid disease](#) [Cell adhesion molecules \(CAMs\)](#) [Graft-versus-host disease](#)
[Systemic lupus erythematosus](#) [Type I diabetes mellitus](#)

Related Disease

[Abortion, Habitual](#) [Abortion, Spontaneous](#) [Abruptio Placentae](#)
[Acquired Immunodeficiency Syndrome](#) [Acute Disease](#) [Addison Disease](#) [Adenocarcinoma](#)
[Adenocarcinoma, Follicular](#) [Adrenal Insufficiency](#) [Aggressive Periodontitis](#)
[Agricultural Workers' Diseases](#) [AIDS-Related Opportunistic Infections](#) [Alopecia](#)

[Alopecia Areata](#) [Alveolar Bone Loss](#) [Anemia](#) [Anemia, Aplastic](#) [Anemia, Sickle Cell](#)
[Anemia, sickle cell](#)

[... see more](#)

[服務條款](#) | [隱私權政策](#) | [著作及商標](#) | [網站地圖](#)

©2016 亞諾法生技股份有限公司 Abnova Corporation. 版權所有.