



SZABO SCANDIC

Part of Europa Biosite

Produktinformation



Forschungsprodukte & Biochemikalien



Zellkultur & Verbrauchsmaterial



Diagnostik & molekulare Diagnostik



Laborgeräte & Service

Weitere Information auf den folgenden Seiten!
See the following pages for more information!



Lieferung & Zahlungsart

siehe unsere [Liefer- und Versandbedingungen](#)

Zuschläge

- Mindermengenzuschlag
- Trockeneiszuschlag
- Gefahrgutzuschlag
- Expressversand

SZABO-SCANDIC HandelsgmbH

Quellenstraße 110, A-1100 Wien

T. +43(0)1 489 3961-0

F. +43(0)1 489 3961-7

mail@szabo-scandic.com

www.szabo-scandic.com

[linkedin.com/company/szaboscandic](https://www.linkedin.com/company/szaboscandic) 

HLA-DQB2 monoclonal antibody (M01), clone 4C3

Catalog # : H00003120-M01

規格 : [100 ug]

[List All](#)

Specification

Product Description: Mouse monoclonal antibody raised against a full-length recombinant HLA-DQB2.

Immunogen: HLA-DQB2 (AAH31995, 1 a.a. ~ 231 a.a) full-length recombinant protein with GST tag. MW of the GST tag alone is 26 KDa.

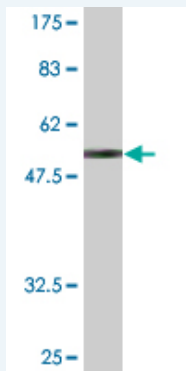
Sequence: MSWKMALQIPGGFWAAAVTVMLVMLSTPVAEARDFPKDFLVQFKGMC
YFTNGTERVRGVARYIYNREEYGRFDSDVGEFQAVTELGRSIEDWNNYK
DFLEQERAADVQVCRHNYEALRRTLQRQVEPTVTISPSRTEALNHHNLL
VCSVTDYFPAQIKVQWFRNDQEETAGVVSTSLIRNGDWTFFQILVMLEITP
QRGDIYTCQVEHPSLQSPITVEWRPRGPPAGLLH

Host: Mouse

Reactivity: Human

Isotype: IgG2a Kappa

Quality Control Testing: Antibody Reactive Against Recombinant Protein.



Western Blot detection against Immunogen (51.15 KDa) .

Storage Buffer: In 1x PBS, pH 7.4

Storage Instruction: Store at -20°C or lower. Aliquot to avoid repeated freezing and thawing.

MSDS: [Download](#)

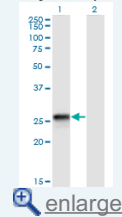
Datasheet: [Download](#)

Applications

Western Blot (Transfected lysate)

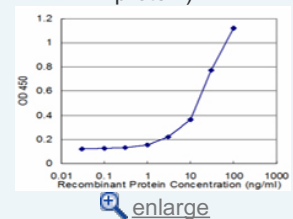
Application Image

Western Blot (Transfected lysate)

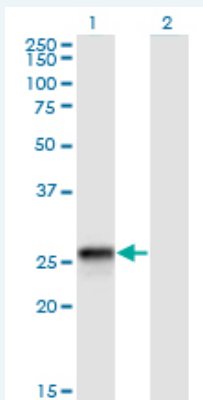


Western Blot (Recombinant protein)

Sandwich ELISA (Recombinant protein)



ELISA



Western Blot analysis of HLA-DQB2 expression in transfected 293T cell line by HLA-DQB2 monoclonal antibody (M01), clone 4C3.

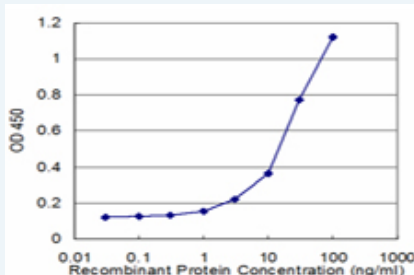
Lane 1: HLA-DQB2 transfected lysate (Predicted MW: 26.5 KDa).
Lane 2: Non-transfected lysate.

[Protocol Download](#)

Western Blot (Recombinant protein)

[Protocol Download](#)

Sandwich ELISA (Recombinant protein)



Detection limit for recombinant GST tagged HLA-DQB2 is approximately 1ng/ml as a capture antibody.

[Protocol Download](#)

ELISA

Gene Information

Entrez GeneID: [3120](#)

GeneBank [BC031995](#)
Accession#:

Protein [AAH31995](#)
Accession#:

Gene Name: HLA-DQB2

Gene Alias: HLA-DQB1,HLA-DXB

Gene Description: major histocompatibility complex, class II, DQ beta 2

Gene Ontology: [Hyperlink](#)

Other Designations: -

Related Disease

[Abortion](#), [Spontaneous Arthritis](#), [Rheumatoid Coronary Aneurysm](#)
[Genetic Predisposition to Disease](#) [Lupus Erythematosus](#), [Systemic](#)

[服務條款](#) | [隱私權政策](#) | [著作及商標](#) | [網站地圖](#)

©2016 亞諾法生技股份有限公司 Abnova Corporation. 版權所有.