



SZABO SCANDIC

Part of Europa Biosite

Produktinformation



Forschungsprodukte & Biochemikalien



Zellkultur & Verbrauchsmaterial



Diagnostik & molekulare Diagnostik



Laborgeräte & Service

Weitere Information auf den folgenden Seiten!
See the following pages for more information!



Lieferung & Zahlungsart

siehe unsere [Liefer- und Versandbedingungen](#)

Zuschläge

- Mindermengenzuschlag
- Trockeneiszuschlag
- Gefahrgutzuschlag
- Expressversand

SZABO-SCANDIC HandelsgmbH

Quellenstraße 110, A-1100 Wien

T. +43(0)1 489 3961-0

F. +43(0)1 489 3961-7

mail@szabo-scandic.com

www.szabo-scandic.com

[linkedin.com/company/szaboscandic](https://www.linkedin.com/company/szaboscandic) 

HLA-DRA purified MaxPab mouse polyclonal antibody (B01P) MaxPab®

Catalog # : H00003122-B01P

規格 : [50 ug]

[List All](#)

Specification

Product Description: Mouse polyclonal antibody raised against a full-length human HLA-DRA protein.

Immunogen: HLA-DRA (AAH32350, 1 a.a. ~ 254 a.a) full-length human protein.

Sequence:
 MAISGVPVLGFFIIAVLMSAQESWAIKEEHVIIQAEFYLNPDQSGEFMFDF
 DGDEIFHVDMAKKETVWRLEEFGRFASFEAQGALANIVDKANLEIMTKR
 SNYTPITNVPPEVTLTNSPVLEPMLICFIDKFTPPVVNVTWLRNGKP
 VTTGVSETVFLPREDHLFRKFHYLPFLPSTEDVYDCRVEHWGLDEPLLK
 HWEFDAPSPLPETTENVCALGLTVGLVGIIIGTIFIKGLRKSNAERGP
 L

Host: Mouse

Reactivity: Human

Quality Control Testing: Antibody reactive against mammalian transfected lysate.

Storage Buffer: In 1x PBS, pH 7.4

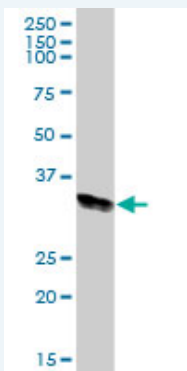
Storage Instruction: Store at -20°C or lower. Aliquot to avoid repeated freezing and thawing.

MSDS:  [Download](#)

Datasheet:  [Download](#)

Applications

Western Blot (Tissue lysate)



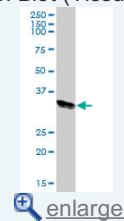
HLA-DRA MaxPab polyclonal antibody. Western Blot analysis of HLA-DRA expression in human kidney.

 [Protocol Download](#)

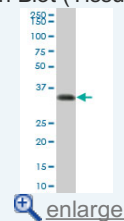
Western Blot (Tissue lysate)

Application Image

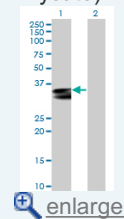
Western Blot (Tissue lysate)

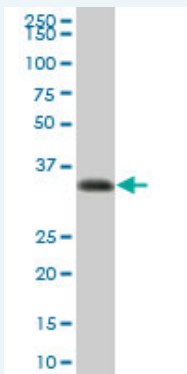


Western Blot (Tissue lysate)



Western Blot (Transfected lysate)

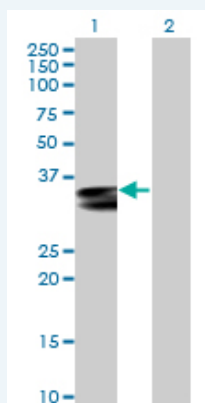




HLA-DRA MaxPab polyclonal antibody. Western Blot analysis of HLA-DRA expression in human spleen.

 [Protocol Download](#)

Western Blot (Transfected lysate)



Western Blot analysis of HLA-DRA expression in transfected 293T cell line ([H00003122-T01](#)) by HLA-DRA MaxPab polyclonal antibody.

Lane 1: HLA-DRA transfected lysate(28.05 KDa).

Lane 2: Non-transfected lysate.

 [Protocol Download](#)

Gene Information

Entrez GeneID: [3122](#)

GeneBank [BC032350](#)
Accession#:

Protein [AAH32350](#)
Accession#:

Gene Name: HLA-DRA

Gene Alias: HLA-DRA1

Gene Description: major histocompatibility complex, class II, DR alpha

Omim ID: [142860](#)

Gene Ontology: [Hyperlink](#)

Gene Summary: HLA-DRA is one of the HLA class II alpha chain paralogues. This class II molecule is a heterodimer consisting of an alpha and a beta chain, both anchored in the membrane. It plays a central role in the immune system by presenting peptides derived from extracellular proteins. Class II molecules are expressed in antigen presenting cells (APC: B lymphocytes, dendritic cells, macrophages). The alpha chain is approximately 33-35 kDa and its gene contains 5 exons. Exon 1 encodes the leader peptide, exons 2 and 3 encode the two extracellular

domains, and exon 4 encodes the transmembrane domain and the cytoplasmic tail. DRA does not have polymorphisms in the peptide binding part and acts as the sole alpha chain for DRB1, DRB3, DRB4 and DRB5. [provided by RefSeq]

Other Designations: HLA class II histocompatibility antigen, DR alpha chain, MHC cell surface glycoprotein, histocompatibility antigen HLA-DR alpha

Gene Pathway

[Allograft rejection](#) [Antigen processing and presentation](#) [Asthma](#)
[Autoimmune thyroid disease](#) [Cell adhesion molecules \(CAMs\)](#) [Graft-versus-host disease](#)
[Hematopoietic cell lineage](#) [Systemic lupus erythematosus](#) [Type I diabetes mellitus](#)

Related Disease

[Abortion, Spontaneous](#) [Alzheimer Disease](#) [Alzheimer disease](#) [Anticipation, Genetic](#)
[Arthritis, Rheumatoid](#) [Asthma](#) [Asthma](#) [Atherosclerosis](#) [Atrial Fibrillation](#)
[Bronchial Hyperreactivity](#) [Bronchiolitis](#) [Cardiovascular Diseases](#) [Celiac Disease](#)
[Cerebral Amyloid Angiopathy](#) [Cerebrovascular Accident](#) [Colitis, Ulcerative](#) [Crohn Disease](#)
[Crohn's disease](#) [Diabetes Mellitus, Type 1](#)

... see more

[服務條款](#) | [隱私權政策](#) | [著作及商標](#) | [網站地圖](#)

©2016 亞諾法生技股份有限公司 Abnova Corporation. 版權所有.