



# SZABO SCANDIC

Part of Europa Biosite

## Produktinformation



Forschungsprodukte & Biochemikalien



Zellkultur & Verbrauchsmaterial



Diagnostik & molekulare Diagnostik



Laborgeräte & Service

Weitere Information auf den folgenden Seiten!  
See the following pages for more information!



### Lieferung & Zahlungsart

siehe unsere [Liefer- und Versandbedingungen](#)

### Zuschläge

- Mindermengenzuschlag
- Trockeneiszuschlag
- Gefahrgutzuschlag
- Expressversand

### SZABO-SCANDIC HandelsgmbH

Quellenstraße 110, A-1100 Wien

T. +43(0)1 489 3961-0

F. +43(0)1 489 3961-7

[mail@szabo-scandic.com](mailto:mail@szabo-scandic.com)

[www.szabo-scandic.com](http://www.szabo-scandic.com)

[linkedin.com/company/szaboscandic](https://www.linkedin.com/company/szaboscandic) 

## HLA-DRA 293T Cell Transient Overexpression Lysate(Denatured)

Catalog # : H00003122-T03

規格 : [ 100 uL ]

List All

### Specification

**Transfected Cell Line:** 293T

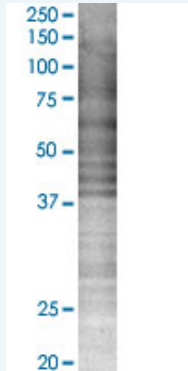
**Plasmid:** pCMV-HLA-DRA full-length

**Host:** Human

**Theoretical MW (kDa):** 28.6

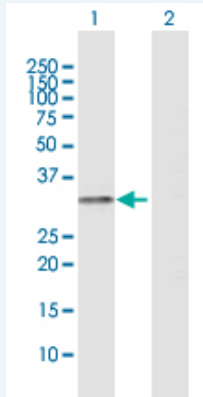
**Quality Control Testing:** Transient overexpression cell lysate was tested with Anti-HLA-DRA antibody (H00003122-D01) by Western Blots.

#### SDS-PAGE Gel



HLA-DRA transfected lysate.

#### Western Blot



Lane 1: HLA-DRA transfected lysate ( 28.60 KDa)

Lane 2: Non-transfected lysate.

**Storage Buffer:** 1X Sample Buffer (50 mM Tris-HCl, 2% SDS, 10% glycerol, 300 mM 2-mercaptoethanol, 0.01% Bromophenol blue)

**Storage Instruction:** Store at -80°C. Aliquot to avoid repeated freezing and thawing.

**MSDS:**  [Download](#)

### Applications

### Application Image

Western Blot

## Western Blot

### Gene Information

Entrez GeneID: [3122](#)

GeneBank [NM\\_019111](#)  
Accession#:

Protein [NP\\_061984.2](#)  
Accession#:

Gene Name: HLA-DRA

Gene Alias: HLA-DRA1

Gene Description: major histocompatibility complex, class II, DR alpha

Omim ID: [142860](#)

Gene Ontology: [Hyperlink](#)

**Gene Summary:** HLA-DRA is one of the HLA class II alpha chain paralogues. This class II molecule is a heterodimer consisting of an alpha and a beta chain, both anchored in the membrane. It plays a central role in the immune system by presenting peptides derived from extracellular proteins. Class II molecules are expressed in antigen presenting cells (APC: B lymphocytes, dendritic cells, macrophages). The alpha chain is approximately 33-35 kDa and its gene contains 5 exons. Exon 1 encodes the leader peptide, exons 2 and 3 encode the two extracellular domains, and exon 4 encodes the transmembrane domain and the cytoplasmic tail. DRA does not have polymorphisms in the peptide binding part and acts as the sole alpha chain for DRB1, DRB3, DRB4 and DRB5. [provided by RefSeq]

**Other Designations:** HLA class II histocompatibility antigen, DR alpha chain, MHC cell surface glycoprotein, histocompatibility antigen HLA-DR alpha

### Gene Pathway

[Allograft rejection](#) [Antigen processing and presentation](#) [Asthma](#)  
[Autoimmune thyroid disease](#) [Cell adhesion molecules \(CAMs\)](#) [Graft-versus-host disease](#)  
[Hematopoietic cell lineage](#) [Systemic lupus erythematosus](#) [Type I diabetes mellitus](#)

### Related Disease

[Abortion](#), [Spontaneous Alzheimer Disease](#) [Alzheimer disease](#) [Anticipation](#), [Genetic Arthritis](#), [Rheumatoid Asthma](#) [Asthma](#) [Atherosclerosis](#) [Atrial Fibrillation](#)  
[Bronchial Hyperreactivity](#) [Bronchiolitis](#) [Cardiovascular Diseases](#) [Celiac Disease](#)  
[Cerebral Amyloid Angiopathy](#) [Cerebrovascular Accident](#) [Colitis](#), [Ulcerative Crohn Disease](#)  
[Crohn's disease](#) [Diabetes Mellitus](#), [Type 1](#)

... see more