



# SZABO SCANDIC

Part of Europa Biosite

## Produktinformation



Forschungsprodukte & Biochemikalien



Zellkultur & Verbrauchsmaterial



Diagnostik & molekulare Diagnostik



Laborgeräte & Service

Weitere Information auf den folgenden Seiten!  
See the following pages for more information!



### Lieferung & Zahlungsart

siehe unsere [Liefer- und Versandbedingungen](#)

### Zuschläge

- Mindermengenzuschlag
- Trockeneiszuschlag
- Gefahrgutzuschlag
- Expressversand

### SZABO-SCANDIC HandelsgmbH

Quellenstraße 110, A-1100 Wien

T. +43(0)1 489 3961-0

F. +43(0)1 489 3961-7

[mail@szabo-scandic.com](mailto:mail@szabo-scandic.com)

[www.szabo-scandic.com](http://www.szabo-scandic.com)

[linkedin.com/company/szaboscandic](https://www.linkedin.com/company/szaboscandic) 



## HLA-DRB1 purified MaxPab mouse polyclonal antibody (B02P) MaxPab®

Catalog # : H00003123-B02P

規格 : [ 50 ug ]

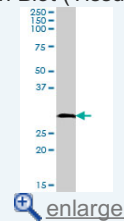
List All

### Specification

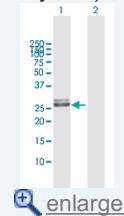
<b>Product Description:</b>	Mouse polyclonal antibody raised against a full-length human HLA-DRB1 protein.
<b>Immunogen:</b>	HLA-DRB1 (AAH33827.1, 1 a.a. ~ 266 a.a) full-length human protein.
<b>Sequence:</b>	MVCLKLPGGSCMTALVTLMVLSSPLALSGDTRPRFLWQPKRECHFFN GTERVRFLDRYFYNQEESVRFDSVDGFRVTELGPRDAEYWNSQKDI LEQARAADVITYCRHNYGWESFTVQRRVQPKVTVYPSKTQPLQHNNLL VCSVSGFYPGSIEVRWFLNGQEEKAGMVSTGLIQNGDWTFQTLVMLET VPRSGEYVTCQVEHPSVTSPLTVEWRARSESAQSKMLSGVGGFVLGLL FLGAGLFYFRNQKGHSLQPTGFLS
<b>Host:</b>	Mouse
<b>Reactivity:</b>	Human
<b>Quality Control Testing:</b>	Antibody reactive against mammalian transfected lysate.
<b>Storage Buffer:</b>	In 1x PBS, pH 7.4
<b>Storage Instruction:</b>	Store at -20°C or lower. Aliquot to avoid repeated freezing and thawing.
<b>MSDS:</b>	 <a href="#">Download</a>
<b>Datasheet:</b>	 <a href="#">Download</a>

### Application Image

Western Blot (Tissue lysate)



Western Blot (Transfected lysate)

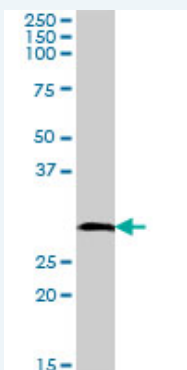


### Publication Reference

1. DRB1\*15 Allele Is a Risk Factor for PR3-ANCA Disease in African Americans.  
Cao Y, Schmitz JL, Yang J, Hogan SL, Bunch D, Hu Y, Jennette CE, Berg EA, Arnett FC Jr, Jennette JC, Falk RJ, Preston GA. *J Am Soc Nephrol.* 2011 Jun;22(6):1161-7. Epub 2011 May 26.

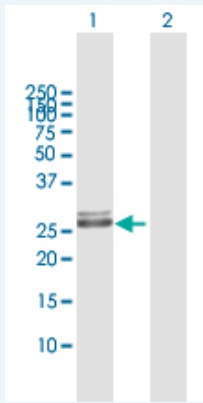
### Applications

Western Blot (Tissue lysate)



HLA-DRB1 MaxPab polyclonal antibody. Western Blot analysis of HLA-DRB1 expression in human spleen.

**Western Blot (Transfected lysate)**



Western Blot analysis of HLA-DRB1 expression in transfected 293T cell line (H00003123-T03) by HLA-DRB1 MaxPab polyclonal antibody.

Lane 1: HLA-DRB1 transfected lysate(29.26 KDa).  
Lane 2: Non-transfected lysate.

**Gene Information**

**Entrez GeneID:** [3123](#)

**GeneBank Accession#:** [BC033827.1](#)

**Protein Accession#:** [AAH33827.1](#)

**Gene Name:** HLA-DRB1

**Gene Alias:** DRB1,FLJ76359,HLA-DR1B,HLA-DRB,HLA-DRB1\*,SS1

**Gene Description:** major histocompatibility complex, class II, DR beta 1

**Omim ID:** [126200](#), [142857](#), [181000](#)

**Gene Ontology:** [Hyperlink](#)

**Gene Summary:** HLA-DRB1 belongs to the HLA class II beta chain paralogs. The class II molecule is a heterodimer consisting of an alpha (DRA) and a beta chain (DRB), both anchored in the membrane. It plays a central role in the immune system by presenting peptides derived from extracellular proteins. Class II molecules are expressed in antigen presenting cells (APC: B lymphocytes, dendritic cells, macrophages). The beta chain is approximately 26-28 kDa. It is encoded by 6 exons. Exon one encodes the leader peptide; exons 2 and 3 encode the two extracellular domains; exon 4 encodes the transmembrane domain; and exon 5 encodes the cytoplasmic tail. Within the DR molecule the beta chain contains all the polymorphisms specifying the peptide binding specificities. Hundreds of DRB1 alleles have been described and typing for these polymorphisms is routinely done for bone marrow and kidney transplantation. DRB1 is expressed at a level five times higher than its paralogs DRB3, DRB4 and DRB5. DRB1 is present in all individuals. Allelic variants of DRB1 are linked with either none or one of the genes DRB3, DRB4 and DRB5. There are 4 related pseudogenes: DRB2, DRB6, DRB7, DRB8 and DRB9. [provided by RefSeq]

**Other Designations:** HLA class II antigen beta chain,HLA class II histocompatibility antigen, DR-1 beta chain,HLA-DR-beta 1,MHC class II HLA-DR beta 1 chain,MHC class II HLA-DR-beta cell surface glycoprotein,MHC class II antigen HLA-DR13,human leucocyte antigen DRB1,leucocyte

## Gene Pathway

---

[Allograft rejection](#) [Antigen processing and presentation](#) [Asthma](#)  
[Autoimmune thyroid disease](#) [Cell adhesion molecules \(CAMs\)](#) [Graft-versus-host disease](#)  
[Hematopoietic cell lineage](#) [Systemic lupus erythematosus](#) [Type I diabetes mellitus](#)

## Related Disease

---

[Abortion, Habitual](#) [Abruptio Placentae](#) [Acquired Immunodeficiency Syndrome](#)  
[Acute Disease](#) [Addison Disease](#) [Adenocarcinoma](#) [Adenocarcinoma, Follicular](#)  
[Adrenal Cortex Neoplasms](#) [Adrenal Hyperplasia, Congenital](#)  
[Adrenal hyperplasia, congenital](#) [Adrenal Insufficiency](#) [Adrenocortical Carcinoma](#)  
[Agranulocytosis](#) [Agricultural Workers' Diseases](#) [AIDS-Related Opportunistic Infections](#)  
[Alopecia](#) [Alopecia Areata](#) [Alport syndrome](#) [Alveolar Bone Loss](#)

... see more

---

[服務條款](#) | [隱私權政策](#) | [著作及商標](#) | [網站地圖](#)

©2016 亞諾法生技股份有限公司 Abnova Corporation. 版權所有.