



# SZABO SCANDIC

Part of Europa Biosite

## Produktinformation



Forschungsprodukte & Biochemikalien



Zellkultur & Verbrauchsmaterial



Diagnostik & molekulare Diagnostik



Laborgeräte & Service

Weitere Information auf den folgenden Seiten!  
See the following pages for more information!



### Lieferung & Zahlungsart

siehe unsere [Liefer- und Versandbedingungen](#)

### Zuschläge

- Mindermengenzuschlag
- Trockeneiszuschlag
- Gefahrgutzuschlag
- Expressversand

### SZABO-SCANDIC HandelsgmbH

Quellenstraße 110, A-1100 Wien

T. +43(0)1 489 3961-0

F. +43(0)1 489 3961-7

[mail@szabo-scandic.com](mailto:mail@szabo-scandic.com)

[www.szabo-scandic.com](http://www.szabo-scandic.com)

[linkedin.com/company/szaboscandic](https://www.linkedin.com/company/szaboscandic) 

# HLA-DRB3 MaxPab mouse polyclonal antibody (B02) MaxPab®

Catalog # : H00003125-B02

規格 : [ 50 uL ]

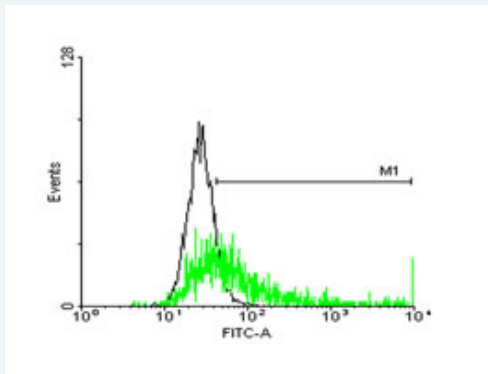
[List All](#)

## Specification

<b>Product Description:</b>	Mouse polyclonal antibody raised against a full-length human HLA-DRB3 protein.
<b>Immunogen:</b>	HLA-DRB3 (NP_072049, 1 a.a. ~ 266 a.a) full-length human protein.
<b>Sequence:</b>	MVCLKLPGGSSLAALTVTLMLSSRLAFAGDTRPRFLELRKSECHFFNG TERVRYLDRYFHNQEEFLRFDSVDVGEYRAVELGRPVAESWNSQKDLL EQKRGVVDNYCRHNYGVGESFTVQRRVHPQVTYPAKTQPLQHNNLLV CSVSGFYPGSIEVRWFRNGQEEKAGVSTGLIQNGDWTFFQTLVMLETV PRSGEYVTCQVEHPSVTALTVEWRARSESASQSKMLSGVGGFVLGLLF LGAGLFIYFRNQKGHSLQPTGFLS
<b>Host:</b>	Mouse
<b>Reactivity:</b>	Human
<b>Quality Control Testing:</b>	Antibody reactive against mammalian transfected lysate.
<b>Storage Buffer:</b>	No additive
<b>Storage Instruction:</b>	Store at -20°C or lower. Aliquot to avoid repeated freezing and thawing.
<b>Note:</b>	For IHC and IF applications, antibody purification with Protein A will be needed prior to use.
<b>MSDS:</b>	<a href="#">Download</a>
<b>Datasheet:</b>	<a href="#">Download</a>

## Applications

### Flow Cytometry



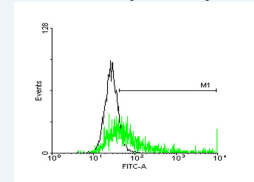
[enlarge this image](#)

FACS analysis of negative control 293 cells (Black) and HLA-DRB3 expressing 293 cells (Green) using HLA-DRB3 purified MaxPab mouse polyclonal antibody.

### Western Blot (Tissue lysate)

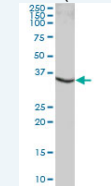
## Application Image

### Flow Cytometry



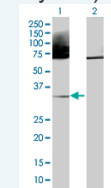
[enlarge](#)

### Western Blot (Tissue lysate)

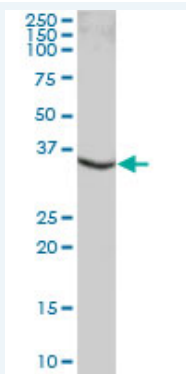


[enlarge](#)

### Western Blot (Transfected lysate)



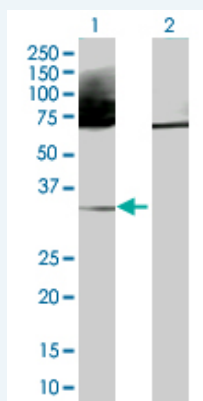
[enlarge](#)



HLA-DRB3 MaxPab polyclonal antibody. Western Blot analysis of HLA-DRB3 expression in human liver.

 [Protocol Download](#)

#### Western Blot (Transfected lysate)



Western Blot analysis of HLA-DRB3 expression in transfected 293T cell line ([H00003125-T01](#)) by HLA-DRB3 MaxPab polyclonal antibody.

Lane 1: HLA-DRB3 transfected lysate(29.26 KDa).

Lane 2: Non-transfected lysate.

 [Protocol Download](#)

#### Gene Information

Entrez GeneID: [3125](#)

GeneBank [NM\\_022555](#)

Accession#:

Protein [NP\\_072049](#)

Accession#:

Gene Name: HLA-DRB3

Gene Alias: HLA-DR3B,MGC117330

Gene Description: major histocompatibility complex, class II, DR beta 3

Description:

Gene Ontology: [Hyperlink](#)

**Gene Summary:** HLA-DRB3 belongs to the HLA class II beta chain paralogues. This class II molecule is a heterodimer consisting of an alpha (DRA) and a beta (DRB) chain, both anchored in the membrane. It plays a central role in the immune system by presenting peptides derived from extracellular proteins. Class II molecules are expressed in antigen presenting cells (APC: B lymphocytes, dendritic cells, macrophages). The beta chain is approximately 26-28 kDa and its gene contains 6 exons. Exon one encodes the leader peptide, exons 2 and 3 encode the two extracellular domains, exon 4 encodes the transmembrane domain and exon 5 encodes the cytoplasmic tail. Within the DR molecule the

beta chain contains all the polymorphisms specifying the peptide binding specificities. Typing for these polymorphisms is routinely done for bone marrow and kidney transplantation. DRB1 is expressed at a level five times higher than its paralogues DRB3, DRB4 and DRB5. The presence of DRB3 is linked with allelic variants of DRB1, otherwise it is omitted. There are 4 related pseudogenes: DRB2, DRB6, DRB7, DRB8 and DRB9. [provided by RefSeq]

**Other** MHC class II HLA-DR beta 3 chain, MHC class II antigen DR beta 3  
**Designations:** chain, human leucocyte antigen DRB3

### Gene Pathway

[Allograft rejection](#) [Antigen processing and presentation](#) [Asthma](#)  
[Autoimmune thyroid disease](#) [Cell adhesion molecules \(CAMs\)](#) [Graft-versus-host disease](#)  
[Hematopoietic cell lineage](#) [Systemic lupus erythematosus](#) [Type I diabetes mellitus](#)

### Related Disease

[Abortion, Habitual](#) [Abruptio Placentae](#) [Alveolar Bone Loss](#) [Aortic Aneurysm, Abdominal](#)  
[Arthritis, Juvenile Rheumatoid](#) [Autoimmune Diseases](#) [Blood Group Incompatibility](#)  
[Brain Neoplasms](#) [Breast cancer](#) [Breast Neoplasms](#) [Bronchiolitis](#) [Carcinoma, Small Cell](#)  
[Cataplexy](#) [Chronic Disease](#) [Churg-Strauss Syndrome](#) [Dementia](#) [Diabetes, Gestational](#)  
[Disease Susceptibility](#) [Genetic Predisposition to Disease](#)

[... see more](#)

[服務條款](#) | [隱私權政策](#) | [著作及商標](#) | [網站地圖](#)

©2016 亞諾法生技股份有限公司 Abnova Corporation. 版權所有.