



# SZABO SCANDIC

Part of Europa Biosite

## Produktinformation



Forschungsprodukte & Biochemikalien



Zellkultur & Verbrauchsmaterial



Diagnostik & molekulare Diagnostik



Laborgeräte & Service

Weitere Information auf den folgenden Seiten!  
See the following pages for more information!



### Lieferung & Zahlungsart

siehe unsere [Liefer- und Versandbedingungen](#)

### Zuschläge

- Mindermengenzuschlag
- Trockeneiszuschlag
- Gefahrgutzuschlag
- Expressversand

### SZABO-SCANDIC HandelsgmbH

Quellenstraße 110, A-1100 Wien

T. +43(0)1 489 3961-0

F. +43(0)1 489 3961-7

[mail@szabo-scandic.com](mailto:mail@szabo-scandic.com)

[www.szabo-scandic.com](http://www.szabo-scandic.com)

[linkedin.com/company/szaboscandic](https://www.linkedin.com/company/szaboscandic) 

## HLA-DRB4 293T Cell Transient Overexpression Lysate(Denatured)

Catalog # : H00003126-T01

規格 : [ 100 uL ]

[List All](#)

### Specification

**Transfected Cell Line:** 293T

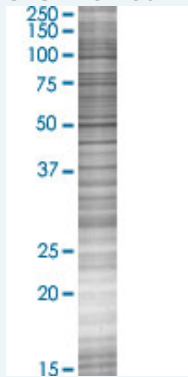
**Plasmid:** pCMV-HLA-DRB4 full-length

**Host:** Human

**Theoretical MW (kDa):** 29.9

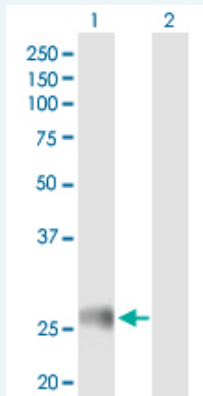
**Quality Control Testing:** Transient overexpression cell lysate was tested with Anti-HLA-DRB4 antibody ([H00003126-B01P](#)) by Western Blots.

#### SDS-PAGE Gel



HLA-DRB4 transfected lysate.

#### Western Blot



Lane 1: HLA-DRB4 transfected lysate ( 29.9 KDa)

Lane 2: Non-transfected lysate.

**Storage Buffer:** 1X Sample Buffer (50 mM Tris-HCl, 2% SDS, 10% glycerol, 300 mM 2-mercaptoethanol, 0.01% Bromophenol blue)

**Storage Instruction:** Store at -80°C. Aliquot to avoid repeated freezing and thawing.

**MSDS:**  [Download](#)

### Applications

## Western Blot

### Gene Information

Entrez GeneID: [3126](#)

GeneBank [NM\\_021983](#)  
Accession#:

Protein [NP\\_068818.4](#)  
Accession#:

Gene Name: HLA-DRB4

Gene Alias: DRB4,HLA-DR4B

Gene Description: major histocompatibility complex, class II, DR beta 4

Gene Ontology: [Hyperlink](#)

**Gene Summary:** HLA-DRB4 belongs to the HLA class II beta chain paralogues. This class II molecule is a heterodimer consisting of an alpha (DRA) and a beta (DRB) chain, both anchored in the membrane. It plays a central role in the immune system by presenting peptides derived from extracellular proteins. Class II molecules are expressed in antigen presenting cells (APC: B lymphocytes, dendritic cells, macrophages). The beta chain is approximately 26-28 kDa and its gene contains 6 exons. Exon one encodes the leader peptide, exons 2 and 3 encode the two extracellular domains, exon 4 encodes the transmembrane domain and exon 5 encodes the cytoplasmic tail. Within the DR molecule the beta chain contains all the polymorphisms specifying the peptide binding specificities. Typing for these polymorphisms is routinely done for bone marrow and kidney transplantation. DRB1 is expressed at a level five times higher than its paralogues DRB3, DRB4 and DRB5. The presence of DRB4 is linked with allelic variants of DRB1, otherwise it is omitted. There are 4 related pseudogenes: DRB2, DRB6, DRB7, DRB8 and DRB9. [provided by RefSeq]

**Other Designations:** DRB1 transplantation antigen,HLA DRB1\*1202,MHC HLA DR-beta chain,MHC class II HLA-DR-beta-7,MHC class II antigen HLA-DR-beta,MHC class II antigen HLA-DRB1,MHC class2 antigen,class II histocompatibility antigen HLA DR alpha, beta1-0307,human leucocyte anti

### Gene Pathway

[Allograft rejection](#) [Antigen processing and presentation](#) [Asthma](#)  
[Autoimmune thyroid disease](#) [Cell adhesion molecules \(CAMs\)](#) [Graft-versus-host disease](#)  
[Hematopoietic cell lineage](#) [Systemic lupus erythematosus](#) [Type I diabetes mellitus](#)

### Related Disease

[Abortion, Habitual](#) [Abruptio Placentae](#) [Alveolar Bone Loss](#) [Aortic Aneurysm](#), [Abdominal Asthma](#) [Bronchiolitis](#) [Cataplexy](#) [Churg-Strauss Syndrome](#) [Colitis, Ulcerative](#) [Dementia Disease Susceptibility](#) [Genetic Predisposition to Disease](#) [Gingival Hemorrhage](#) [Graft vs Host Disease](#) [Hallucinations](#) [Hepatitis, Autoimmune](#) [HIV Infections](#) [Inflammation](#) [Latex Hypersensitivity](#)

... see more