



SZABO SCANDIC

Part of Europa Biosite

Produktinformation



Forschungsprodukte & Biochemikalien



Zellkultur & Verbrauchsmaterial



Diagnostik & molekulare Diagnostik



Laborgeräte & Service

Weitere Information auf den folgenden Seiten!
See the following pages for more information!



Lieferung & Zahlungsart

siehe unsere [Liefer- und Versandbedingungen](#)

Zuschläge

- Mindermengenzuschlag
- Trockeneiszuschlag
- Gefahrgutzuschlag
- Expressversand

SZABO-SCANDIC HandelsgmbH

Quellenstraße 110, A-1100 Wien

T. +43(0)1 489 3961-0

F. +43(0)1 489 3961-7

mail@szabo-scandic.com

www.szabo-scandic.com

[linkedin.com/company/szaboscandic](https://www.linkedin.com/company/szaboscandic) 

HLA-E purified MaxPab mouse polyclonal antibody (B01P) MaxPab®

Catalog # : H00003133-B01P

規格 : [50 ug]

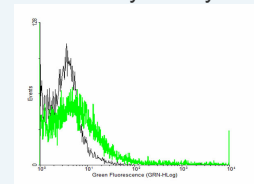
List All

Specification

Product Description:	Mouse polyclonal antibody raised against a full-length human HLA-E protein.
Immunogen:	HLA-E (AAH02578.1, 1 a.a. ~ 358 a.a) full-length human protein.
Sequence:	MVDGTL L L L L L S E A L A L T Q T W A G S H S L K Y F H T S V S R P G R G E P R F I S V G Y V D D T Q F V R F D N D A A S P R M V P R A P W M E Q E G S E Y W D R E T R S A R D T A Q I F R V N L R T L R G Y Y N Q S E A G S H T L Q W M H G C E L G P D R R F L R G Y E Q F A Y D G K D Y L T L N E D L R S W T A V D T A A Q I S E Q K S N D A S E A H Q R A Y L E D T C V E W L H K Y L E K G K E T L L H L E P P K T H V T H H P I S D H E A T L R C W A L G F Y P A E I T L T W Q Q D G E G H T Q D T E L V E T R P A G D G T F Q K W A A V V P S G E E Q R Y T C H V Q H E G L P E P V T L R W K P A S Q P T I P V G I I A G L V L L G S V V S G A V V A A V I W R K K S S G G K G G S Y S K A E W S D S A Q G S E S H S L
Host:	Mouse
Reactivity:	Human
Quality Control Testing:	Antibody reactive against mammalian transfected lysate.
Storage Buffer:	In 1x PBS, pH 7.4
Storage Instruction:	Store at -20°C or lower. Aliquot to avoid repeated freezing and thawing.
MSDS:	Download
Datasheet:	Download

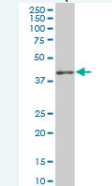
Application Image

Flow Cytometry



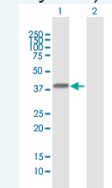
[enlarge](#)

Western Blot (Tissue lysate)



[enlarge](#)

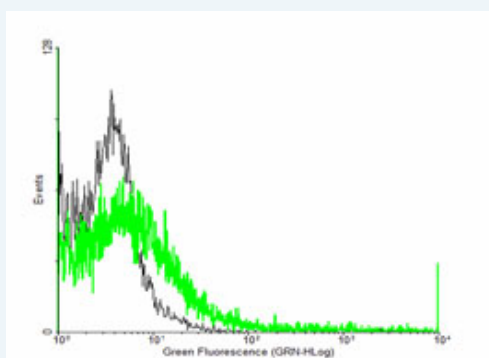
Western Blot (Transfected lysate)



[enlarge](#)

Applications

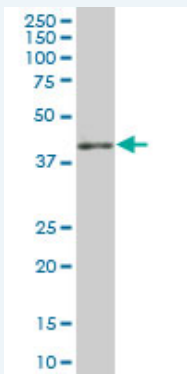
Flow Cytometry



[enlarge this image](#)

FACS analysis of negative control 293 cells (Black) and HLA-E expressing 293 cells (Green) using HLA-E purified MaxPab mouse polyclonal antibody.

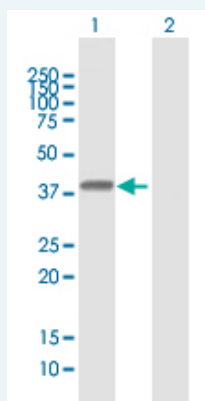
Western Blot (Tissue lysate)



HLA-E MaxPab polyclonal antibody. Western Blot analysis of HLA-E expression in human spleen.

 [Protocol Download](#)

Western Blot (Transfected lysate)



Western Blot analysis of HLA-E expression in transfected 293T cell line ([H00003133-T01](#)) by HLA-E MaxPab polyclonal antibody.

Lane 1: HLA-E transfected lysate(39.38 KDa).

Lane 2: Non-transfected lysate.

 [Protocol Download](#)

Gene Information

Entrez GeneID: [3133](#)

GeneBank [BC002578](#)

Accession#:

Protein [AAH02578.1](#)

Accession#:

Gene Name: HLA-E

Gene Alias: DKFZp686P19218,EA1.2,EA2.1,HLA-6.2,MHC,QA1

Gene Description: major histocompatibility complex, class I, E

Description:

Omim ID: [143010](#)

Gene Ontology: [Hyperlink](#)

Gene Summary: HLA-E belongs to the HLA class I heavy chain paralogues. This class I molecule is a heterodimer consisting of a heavy chain and a light chain (beta-2 microglobulin). The heavy chain is anchored in the membrane. HLA-E binds a restricted subset of peptides derived from the leader peptides of other class I molecules. The heavy chain is approximately 45 kDa and its gene contains 8 exons. Exon one encodes the leader peptide, exons 2 and 3 encode the alpha1 and alpha2 domains, which both bind the peptide, exon 4 encodes the alpha3 domain, exon 5

encodes the transmembrane region, and exons 6 and 7 encode the cytoplasmic tail. [provided by RefSeq]

Other Designations: HLA class I histocompatibility antigen, E alpha chain, MHC HLA-E alpha-1, MHC HLA-E alpha-2.1, MHC class I antigen, OTTHUMP00000029214, lymphocyte antigen

Gene Pathway

[Allograft rejection](#) [Antigen processing and presentation](#) [Autoimmune thyroid disease](#) [Cell adhesion molecules \(CAMs\)](#) [Endocytosis](#) [Graft-versus-host disease](#) [Natural killer cell mediated cytotoxicity](#) [Type I diabetes mellitus](#)

Related Disease

[Abortion, Habitual](#) [Abortion, Spontaneous](#) [Acute Disease](#) [Anemia, Sickle Cell](#) [Anemia, sickle cell](#) [Bacterial Infections](#) [Behcet Syndrome](#) [Bone Marrow Diseases](#) [Carcinoma](#) [Chorioamnionitis](#) [Coronary Aneurysm](#) [Cytomegalovirus Infections](#) [Fetal Membranes, Premature Rupture](#) [Genetic Predisposition to Disease](#) [Graft vs Host Disease](#) [HIV Infections](#) [Lupus Erythematosus, Systemic](#) [Mucocutaneous Lymph Node Syndrome](#) [Nasopharyngeal Neoplasms](#)

... see more

[服務條款](#) | [隱私權政策](#) | [著作及商標](#) | [網站地圖](#)

©2016 亞諾法生技股份有限公司 Abnova Corporation. 版權所有.