



SZABO SCANDIC

Part of Europa Biosite

Produktinformation



Forschungsprodukte & Biochemikalien



Zellkultur & Verbrauchsmaterial



Diagnostik & molekulare Diagnostik



Laborgeräte & Service

Weitere Information auf den folgenden Seiten!
See the following pages for more information!



Lieferung & Zahlungsart

siehe unsere [Liefer- und Versandbedingungen](#)

Zuschläge

- Mindermengenzuschlag
- Trockeneiszuschlag
- Gefahrgutzuschlag
- Expressversand

SZABO-SCANDIC HandelsgmbH

Quellenstraße 110, A-1100 Wien

T. +43(0)1 489 3961-0

F. +43(0)1 489 3961-7

mail@szabo-scandic.com

www.szabo-scandic.com

[linkedin.com/company/szaboscandic](https://www.linkedin.com/company/szaboscandic) 

HLA-E 293T Cell Transient Overexpression Lysate(Denatured)

Catalog # : H00003133-T02

規格 : [100 uL]

[List All](#)

Specification

Transfected Cell Line: 293T

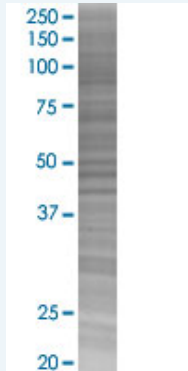
Plasmid: pCMV-HLA-E full-length

Host: Human

Theoretical MW (kDa): 40.2

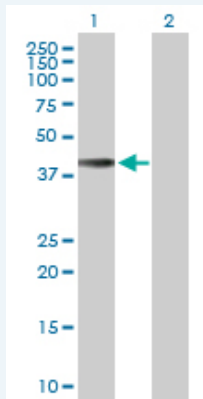
Quality Control Testing: Transient overexpression cell lysate was tested with Anti-HLA-E antibody ([H00003133-D01P](#)) by Western Blots.

SDS-PAGE Gel



HLA-E transfected lysate.

Western Blot



Lane 1: HLA-E transfected lysate (40.20 KDa)

Lane 2: Non-transfected lysate.

Storage Buffer: 1X Sample Buffer (50 mM Tris-HCl, 2% SDS, 10% glycerol, 300 mM 2-mercaptoethanol, 0.01% Bromophenol blue)

Storage Instruction: Store at -80°C. Aliquot to avoid repeated freezing and thawing.

MSDS:  [Download](#)

Applications

Western Blot

Gene Information

Entrez GeneID: [3133](#)

GeneBank [BC002578](#)
Accession#:

Protein [AAH02578.1](#)
Accession#:

Gene Name: HLA-E

Gene Alias: DKFZp686P19218,EA1.2,EA2.1,HLA-6.2,MHC,QA1

Gene Description: major histocompatibility complex, class I, E

Omim ID: [143010](#)

Gene Ontology: [Hyperlink](#)

Gene Summary: HLA-E belongs to the HLA class I heavy chain paralogues. This class I molecule is a heterodimer consisting of a heavy chain and a light chain (beta-2 microglobulin). The heavy chain is anchored in the membrane. HLA-E binds a restricted subset of peptides derived from the leader peptides of other class I molecules. The heavy chain is approximately 45 kDa and its gene contains 8 exons. Exon one encodes the leader peptide, exons 2 and 3 encode the alpha1 and alpha2 domains, which both bind the peptide, exon 4 encodes the alpha3 domain, exon 5 encodes the transmembrane region, and exons 6 and 7 encode the cytoplasmic tail. [provided by RefSeq]

Other Designations: HLA class I histocompatibility antigen, E alpha chain,MHC HLA-E alpha-1,MHC HLA-E alpha-2.1,MHC class I antigen,OTTHUMP00000029214,lymphocyte antigen

Gene Pathway

[Allograft rejection](#) [Antigen processing and presentation](#) [Autoimmune thyroid disease](#)
[Cell adhesion molecules \(CAMs\)](#) [Endocytosis](#) [Graft-versus-host disease](#)
[Natural killer cell mediated cytotoxicity](#) [Type I diabetes mellitus](#)

Related Disease

[Abortion, Habitual](#) [Abortion, Spontaneous](#) [Acute Disease](#) [Anemia, Sickle Cell](#)
[Anemia, sickle cell](#) [Bacterial Infections](#) [Behcet Syndrome](#) [Bone Marrow Diseases](#)
[Carcinoma](#) [Chorioamnionitis](#) [Coronary Aneurysm](#) [Cytomegalovirus Infections](#)
[Fetal Membranes, Premature Rupture](#) [Genetic Predisposition to Disease](#)
[Graft vs Host Disease](#) [HIV Infections](#) [Lupus Erythematosus, Systemic](#)
[Mucocutaneous Lymph Node Syndrome](#) [Nasopharyngeal Neoplasms](#)

... see more