



SZABO SCANDIC

Part of Europa Biosite

Produktinformation



Forschungsprodukte & Biochemikalien



Zellkultur & Verbrauchsmaterial



Diagnostik & molekulare Diagnostik



Laborgeräte & Service

Weitere Information auf den folgenden Seiten!
See the following pages for more information!



Lieferung & Zahlungsart

siehe unsere [Liefer- und Versandbedingungen](#)

Zuschläge

- Mindermengenzuschlag
- Trockeneiszuschlag
- Gefahrgutzuschlag
- Expressversand

SZABO-SCANDIC HandelsgmbH

Quellenstraße 110, A-1100 Wien

T. +43(0)1 489 3961-0

F. +43(0)1 489 3961-7

mail@szabo-scandic.com

www.szabo-scandic.com

[linkedin.com/company/szaboscandic](https://www.linkedin.com/company/szaboscandic) 

HLX purified MaxPab rabbit polyclonal antibody (D01P) MaxPab®

Catalog # : H00003142-D01P

規格 : [100 ug]

[List All](#)

Specification

Product Description: Rabbit polyclonal antibody raised against a full-length human HLX protein.

Immunogen: HLX (NP_068777.1, 1 a.a. ~ 488 a.a) full-length human protein.

Sequence:
MFAAGLAPFYASNFSLWSAAYCSSAGPGGCSFPLDPAAVKKPSFCIADIL
HAGVGDLGAAPEGLAGASAAALTAHLGSVHPHASFQAAARSPLRPTPVV
APSEVPAGFPQRLSPLSAAYHHHPQQQQQQQPPPPRAGA
LQPPASGTRVVPNPHHSGSAPAPSSKDLKFGIDRILSAEFDPKVKEGNTL
RDLTSLLTGGRPAGVHLSGLQPSAGQFFASLDPINEASAILSPLNSNPRN
SVQHQFQDTFPGPYAVLTKDTPMPQTYKRKRSWSRAVFSNLQRKGLEK
RFEIQKYVTKPDRKQLAAMLGLTDAQVKWWFQNRMMKWRHSKEAQAQ
KDKDKEAGEKPSGGAPAADGEQDERSPSRSEGEAESESSDSESLDMAP
SDTERTEGSESLHQTTVIKAPVTGALITASSAGSGGSSGGGNSFSFS
SASSLSSSSTAGCASSLGGGGASELLPATQPTASSAPKSPEPAQAGAL
GCL

Host: Rabbit

Reactivity: Human

Quality Control Testing: Antibody reactive against mammalian transfected lysate.

Storage Buffer: In 1x PBS, pH 7.4

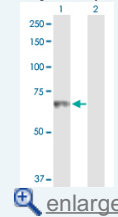
Storage Instruction: Store at -20°C or lower. Aliquot to avoid repeated freezing and thawing.

MSDS: [Download](#)

Datasheet: [Download](#)

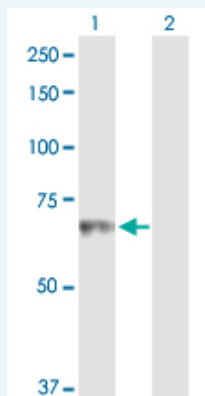
Application Image

Western Blot (Transfected lysate)



Applications

Western Blot (Transfected lysate)



Western Blot analysis of HLX expression in transfected 293T cell line (H00003142-T02) by HLX MaxPab polyclonal antibody.

Lane 1: HLX transfected lysate(50.80 KDa).

Lane 2: Non-transfected lysate.

 [Protocol Download](#)

Gene Information

Entrez GeneID: [3142](#)

**GeneBank
Accession#:** [NM_021958.2](#)

**Protein
Accession#:** [NP_068777.1](#)

Gene Name: HLX

Gene Alias: HB24,HLX1

**Gene
Description:** H2.0-like homeobox

Omim ID: [142995](#)

Gene Ontology: [Hyperlink](#)

**Other
Designations:** H2.0-like homeo box 1,H2.0-like homeo box-1,H2.0-like homeobox
1,OTTHUMP00000035459,homeobox

Related Disease

[Asthma](#) [Asthma](#) [Genetic Predisposition to Disease](#) [Leukemia, Myelocytic, Acute](#)
[Neoplasms, Second Primary](#)

[服務條款](#) | [隱私權政策](#) | [著作及商標](#) | [網站地圖](#)

©2016 亞諾法生技股份有限公司 Abnova Corporation. 版權所有.