



# SZABO SCANDIC

Part of Europa Biosite

## Produktinformation



Forschungsprodukte & Biochemikalien



Zellkultur & Verbrauchsmaterial



Diagnostik & molekulare Diagnostik



Laborgeräte & Service

Weitere Information auf den folgenden Seiten!  
See the following pages for more information!



### Lieferung & Zahlungsart

siehe unsere [Liefer- und Versandbedingungen](#)

### Zuschläge

- Mindermengenzuschlag
- Trockeneiszuschlag
- Gefahrgutzuschlag
- Expressversand

### SZABO-SCANDIC HandelsgmbH

Quellenstraße 110, A-1100 Wien

T. +43(0)1 489 3961-0

F. +43(0)1 489 3961-7

[mail@szabo-scandic.com](mailto:mail@szabo-scandic.com)

[www.szabo-scandic.com](http://www.szabo-scandic.com)

[linkedin.com/company/szaboscandic](https://www.linkedin.com/company/szaboscandic) 

## LAMB3 monoclonal antibody (M01), clone 2G10

Catalog # : H00003914-M01

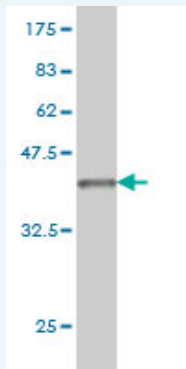
規格 : [ 100 ug ]

[List All](#)

### Specification

<b>Product Description:</b>	Mouse monoclonal antibody raised against a partial recombinant LAMB3.
<b>Immunogen:</b>	LAMB3 (NP_000219, 1064 a.a. ~ 1171 a.a) partial recombinant protein with GST tag. MW of the GST tag alone is 26 KDa.
<b>Sequence:</b>	AEGASEQALSAQEGFERIKQKYAELKDRLGQSSMLGEQGARIQSVKTEA EELFGETMEMMDRMKDMELLLRGSQAIMLRADLTGLEKRVEQIRDHI NGRVLYYATC
<b>Host:</b>	Mouse
<b>Reactivity:</b>	Human
<b>Isotype:</b>	IgG1 Kappa

**Quality Control Testing:** Antibody Reactive Against Recombinant Protein.



Western Blot detection against Immunogen (37.62 KDa) .

**Storage Buffer:** In 1x PBS, pH 7.4

**Storage Instruction:** Store at -20°C or lower. Aliquot to avoid repeated freezing and thawing.

**MSDS:** [Download](#)

**Datasheet:** [Download](#)

### Publication Reference

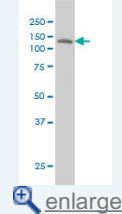
1. Clinical significance of LAMB3 and COL7A1 mRNA in esophageal squamous cell carcinoma.  
Kita Y, Mimori K, Tanaka F, Matsumoto T, Haraguchi N, Ishikawa K, Matsuzaki S, Fukuyoshi Y, Inoue H, Natsugoe S, Aikou T, Mori M. *Eur J Surg Oncol.* 2009 Jan;35(1):52-58. Epub 2008 Mar 10.

### Applications

**Western Blot (Cell lysate)**

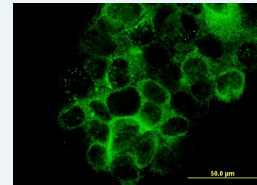
### Application Image

Western Blot (Cell lysate)

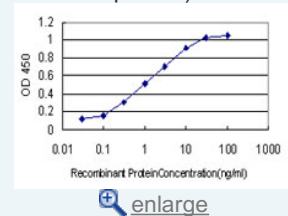


Western Blot (Recombinant protein)

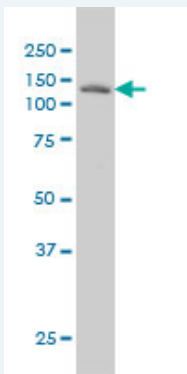
Immunofluorescence



Sandwich ELISA (Recombinant protein)



ELISA



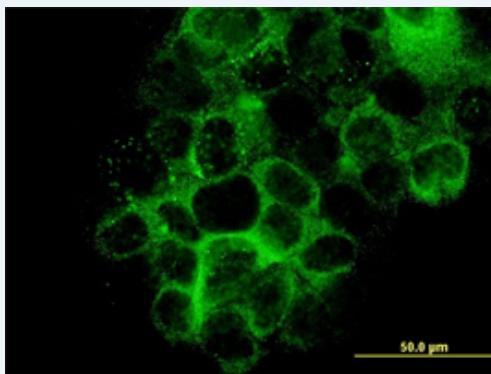
LAMB3 monoclonal antibody (M01), clone 2G10 Western Blot analysis of LAMB3 expression in A-431 ( Cat # L015V1 ).

[Protocol Download](#)

#### Western Blot (Recombinant protein)

[Protocol Download](#)

#### Immunofluorescence

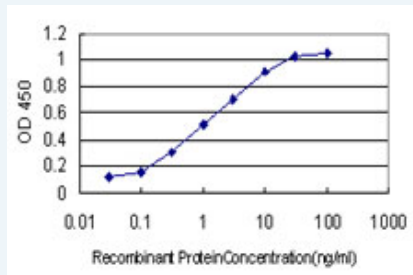


[enlarge this image](#)

Immunofluorescence of monoclonal antibody to LAMB3 on A-431 cell. [antibody concentration 10 ug/ml]

[Protocol Download](#)

#### Sandwich ELISA (Recombinant protein)



Detection limit for recombinant GST tagged LAMB3 is approximately 0.03ng/ml as a capture antibody.

[Protocol Download](#)

#### ELISA

#### Gene Information

Entrez GeneID: [3914](#)

GeneBank [NM\\_000228](#)

Accession#:

Protein [NP\\_000219](#)

Accession#:

Gene Name: LAMB3

Gene Alias: BM600-125KDA, FLJ99565, LAM5, LAMNB1

**Gene** laminin, beta 3

**Description:**

**Omim ID:** [150310](#), [226650](#), [226700](#)

**Gene Ontology:** [Hyperlink](#)

**Gene Summary:** The product encoded by this gene is a laminin that belongs to a family of basement membrane proteins. This protein is a beta subunit laminin, which together with an alpha and a gamma subunit, forms laminin-5. Mutations in this gene cause epidermolysis bullosa junctional Herlitz type, and generalized atrophic benign epidermolysis bullosa, diseases that are characterized by blistering of the skin. Multiple alternatively spliced transcript variants that encode the same protein have been found for this gene. [provided by RefSeq]

**Other Designations:** OTTHUMP00000034555,OTTHUMP00000034640,kalinin B1 chain,kalinin-140kDa,laminin B1k chain,laminin S B3 chain,laminin, beta 3 (nicein (125kD), kalinin (140kD), BM600 (125kD)),nicein-125kDa

**Gene Pathway**

[ECM-receptor interaction](#) [Focal adhesion](#) [Pathways in cancer](#) [Small cell lung cancer](#)

**Related Disease**

[Genetic Predisposition to Disease](#) [Macular Degeneration](#) [Uterine Cervical Neoplasms](#)

[服務條款](#) | [隱私權政策](#) | [著作及商標](#) | [網站地圖](#)

©2016 亞諾法生技股份有限公司 Abnova Corporation. 版權所有.