



# SZABO SCANDIC

Part of Europa Biosite

## Produktinformation



Forschungsprodukte & Biochemikalien



Zellkultur & Verbrauchsmaterial



Diagnostik & molekulare Diagnostik



Laborgeräte & Service

Weitere Information auf den folgenden Seiten!  
See the following pages for more information!



### Lieferung & Zahlungsart

siehe unsere [Liefer- und Versandbedingungen](#)

### Zuschläge

- Mindermengenzuschlag
- Trockeneiszuschlag
- Gefahrgutzuschlag
- Expressversand

### SZABO-SCANDIC HandelsgmbH

Quellenstraße 110, A-1100 Wien

T. +43(0)1 489 3961-0

F. +43(0)1 489 3961-7

[mail@szabo-scandic.com](mailto:mail@szabo-scandic.com)

[www.szabo-scandic.com](http://www.szabo-scandic.com)

[linkedin.com/company/szaboscandic](https://www.linkedin.com/company/szaboscandic) 

## LAMC2 polyclonal antibody (A01)

Catalog # : H00003918-A01

規格 : [ 50 uL ]

[List All](#)

### Specification

**Product Description:** Mouse polyclonal antibody raised against a partial recombinant LAMC2.

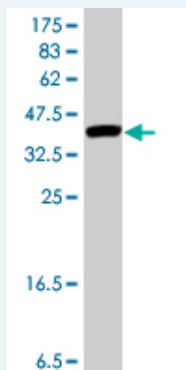
**Immunogen:** LAMC2 (NP\_005553, 1084 a.a. ~ 1193 a.a) partial recombinant protein with GST tag.

**Sequence:** VDTRAKNAGVTIQDTLNTLDGLLHMDQPLSVDEEGLVLEEQKLSRAKT  
QINSQLRPMSELEERARQQRGHLHLLLET SIDGILADVKNLENIRDNLPPG  
CYNTQALEQQ

**Host:** Mouse

**Reactivity:** Human, Mouse

**Quality Control Testing:** Antibody Reactive Against Recombinant Protein.



Western Blot detection against Immunogen (12.21 KDa) .

**Storage Buffer:** 50 % glycerol

**Storage Instruction:** Store at -20°C or lower. Aliquot to avoid repeated freezing and thawing.

**MSDS:** [Download](#)

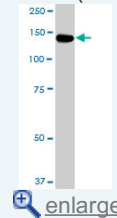
**Datasheet:** [Download](#)

### Applications

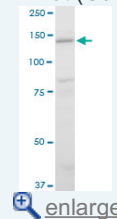
Western Blot (Cell lysate)

### Application Image

Western Blot (Cell lysate)

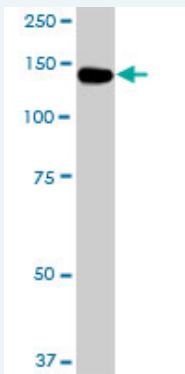


Western Blot (Cell lysate)



Western Blot (Recombinant protein)

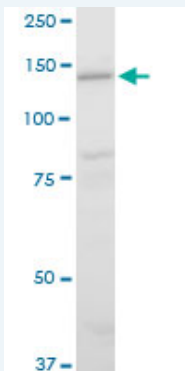
ELISA



LAMC2 polyclonal antibody (A01), Lot # 051003JC01. Western Blot analysis of LAMC2 expression in A-431.

 [Protocol Download](#)


#### Western Blot (Cell lysate)



LAMC2 polyclonal antibody (A01), Lot # 051003JC01. Western Blot analysis of LAMC2 expression in NIH/3T3.

 [Protocol Download](#)

#### Western Blot (Recombinant protein)

 [Protocol Download](#)

#### ELISA

#### Gene Information

**Entrez GeneID:** [3918](#)

**GeneBank Accession#:** [NM\\_005562](#)

**Protein Accession#:** [NP\\_005553](#)

**Gene Name:** LAMC2

**Gene Alias:** B2T,BM600,CSF,EBR2,EBR2A,LAMB2T,LAMNB2,MGC138491,MGC141938

**Gene Description:** laminin, gamma 2

**Omim ID:** [150292](#), [226650](#), [226700](#)

**Gene Ontology:** [Hyperlink](#)

**Gene Summary:** Laminins, a family of extracellular matrix glycoproteins, are the major noncollagenous constituent of basement membranes. They have been implicated in a wide variety of biological processes including cell adhesion, differentiation, migration, signaling, neurite outgrowth and metastasis. Laminins are composed of 3 non identical chains: laminin

alpha, beta and gamma (formerly A, B1, and B2, respectively) and they form a cruciform structure consisting of 3 short arms, each formed by a different chain, and a long arm composed of all 3 chains. Each laminin chain is a multidomain protein encoded by a distinct gene. Several isoforms of each chain have been described. Different alpha, beta and gamma chain isomers combine to give rise to different heterotrimeric laminin isoforms which are designated by Arabic numerals in the order of their discovery, i.e. alpha1beta1gamma1 heterotrimer is laminin 1. The biological functions of the different chains and trimer molecules are largely unknown, but some of the chains have been shown to differ with respect to their tissue distribution, presumably reflecting diverse functions in vivo. This gene encodes the gamma chain isoform laminin, gamma 2. The gamma 2 chain, formerly thought to be a truncated version of beta chain (B2t), is highly homologous to the gamma 1 chain; however, it lacks domain VI, and domains V, IV and III are shorter. It is expressed in several fetal tissues but differently from gamma 1, and is specifically localized to epithelial cells in skin, lung and kidney. The gamma 2 chain together with alpha 3 and beta 3 chains constitute laminin 5 (earlier known as kalinin), which is an integral part of the anchoring filaments that connect epithelial cells to the underlying basement membrane. The epithelium-specific expression of the gamma 2 chain implied its role as an epithelium attachment molecule, and mutations in this gene have been associated with junctional epidermolysis bullosa, a skin disease characterized by blisters due to disruption of the epidermal-dermal junction. Two transcript variants resulting from alternative splicing of the 3' terminal exon, and encoding different isoforms of gamma 2 chain, have been described. The two variants are differentially expressed in embryonic tissues, however, the biological significance of the two forms is not known. Transcript variants utilizing alternative polyA\_signal have also been noted in literature. [provided by RefSeq

---

**Other Designations:** BM600-100kDa, OTTHUMP00000033550, cell-scattering factor (140kDa), epiligrin, kalinin (105kD), kalinin-105kDa, ladsin (140kDa), laminin, gamma 2 (nicein (100kD), kalinin (105kD), BM600 (100kD), Herlitz junctional epidermolysis bullosa), nicein (100kDa), nicein-10

---

#### Gene Pathway

[ECM-receptor interaction](#) [Focal adhesion](#) [Pathways in cancer](#) [Small cell lung cancer](#)

#### Related Disease

[Macular Degeneration](#)

---

[服務條款](#) | [隱私權政策](#) | [著作及商標](#) | [網站地圖](#)

©2016 亞諾法生技股份有限公司 Abnova Corporation. 版權所有.