



SZABO SCANDIC

Part of Europa Biosite

Produktinformation



Forschungsprodukte & Biochemikalien



Zellkultur & Verbrauchsmaterial



Diagnostik & molekulare Diagnostik



Laborgeräte & Service

Weitere Information auf den folgenden Seiten!
See the following pages for more information!



Lieferung & Zahlungsart

siehe unsere [Liefer- und Versandbedingungen](#)

Zuschläge

- Mindermengenzuschlag
- Trockeneiszuschlag
- Gefahrgutzuschlag
- Expressversand

SZABO-SCANDIC HandelsgmbH

Quellenstraße 110, A-1100 Wien

T. +43(0)1 489 3961-0

F. +43(0)1 489 3961-7

mail@szabo-scandic.com

www.szabo-scandic.com

[linkedin.com/company/szaboscandic](https://www.linkedin.com/company/szaboscandic) 

LAMP2 polyclonal antibody (A01)

Catalog # : H00003920-A01

規格 : [50 uL]

[List All](#)

Specification

Product Description: Mouse polyclonal antibody raised against a partial recombinant LAMP2.

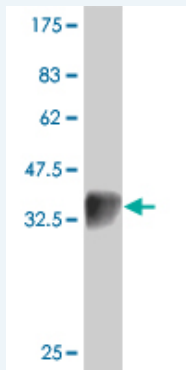
Immunogen: LAMP2 (NP_054701, 30 a.a. ~ 127 a.a) partial recombinant protein with GST tag.

Sequence: ELNLTDSENATCLYAKWQMNFTVRYETTNKTYKTVTISDHGTVTYNGSIC
GDDQNGPKIAVQFGPGFSWIANFTKAASTYSIDSVSFSYNTGDNTTFP

Host: Mouse

Reactivity: Human

Quality Control Testing: Antibody Reactive Against Recombinant Protein.



Western Blot detection against Immunogen (36.89 KDa) .

Storage Buffer: 50 % glycerol

Storage Instruction: Store at -20°C or lower. Aliquot to avoid repeated freezing and thawing.

MSDS: [Download](#)

Datasheet: [Download](#)

Applications

Western Blot (Recombinant protein)

[Protocol Download](#)

ELISA

Gene Information

Entrez GeneID: [3920](#)

GeneBank Accession#: [NM_013995](#)

Application Image

Western Blot (Recombinant protein)

ELISA

Protein [NP_054701](#)

Accession#:

Gene Name: LAMP2

Gene Alias: CD107b,LAMPB,LGP110

Gene Description: lysosomal-associated membrane protein 2

Omim ID: [300257](#), [309060](#)

Gene Ontology: [Hyperlink](#)

Gene Summary: The protein encoded by this gene is a member of a family of membrane glycoproteins. This glycoprotein provides selectins with carbohydrate ligands. It may play a role in tumor cell metastasis. It may also function in the protection, maintenance, and adhesion of the lysosome. Alternative splicing of this gene results in multiple transcript variants encoding distinct proteins. [provided by RefSeq]

Other Designations: OTTHUMP00000023943,OTTHUMP00000023944,lysosome-associated membrane protein 2

Gene Pathway

[Lysosome](#)

Related Disease

[Cardiomegaly](#) [Cardiomyopathy](#), [Dilated Cardiovascular Diseases](#) [Diabetes Mellitus, Type 2](#) [Edema](#) [Genetic Predisposition to Disease](#)

[服務條款](#) | [隱私權政策](#) | [著作及商標](#) | [網站地圖](#)

©2016 亞諾法生技股份有限公司 Abnova Corporation. 版權所有.