



SZABO SCANDIC

Part of Europa Biosite

Produktinformation



Forschungsprodukte & Biochemikalien



Zellkultur & Verbrauchsmaterial



Diagnostik & molekulare Diagnostik



Laborgeräte & Service

Weitere Information auf den folgenden Seiten!
See the following pages for more information!



Lieferung & Zahlungsart

siehe unsere [Liefer- und Versandbedingungen](#)

Zuschläge

- Mindermengenzuschlag
- Trockeneiszuschlag
- Gefahrgutzuschlag
- Expressversand

SZABO-SCANDIC HandelsgmbH

Quellenstraße 110, A-1100 Wien

T. +43(0)1 489 3961-0

F. +43(0)1 489 3961-7

mail@szabo-scandic.com

www.szabo-scandic.com

[linkedin.com/company/szaboscandic](https://www.linkedin.com/company/szaboscandic) 

LAMP2 monoclonal antibody (M01), clone 2G10

Catalog # : H00003920-M01

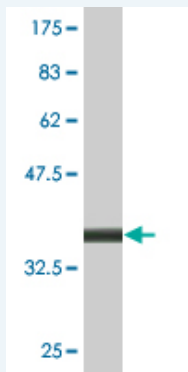
規格 : [100 ug]

[List All](#)

Specification

Product Description:	Mouse monoclonal antibody raised against a partial recombinant LAMP2.
Immunogen:	LAMP2 (NP_054701, 30 a.a. ~ 127 a.a) partial recombinant protein with GST tag. MW of the GST tag alone is 26 KDa.
Sequence:	ELNLTDSENATCLYAKWQMNFTVRYETTnkYKtVtISDHGTVTYNGSIC GDDQNGPKIAVQFGPGFSWIANFTKAASTYSIDSVFSYNTGDNTTFP
Host:	Mouse
Reactivity:	Human
Isotype:	IgG2a Kappa

Quality Control Testing: Antibody Reactive Against Recombinant Protein.



Western Blot detection against Immunogen (36.52 KDa) .

Storage Buffer: In 1x PBS, pH 7.4

Storage Instruction: Store at -20°C or lower. Aliquot to avoid repeated freezing and thawing.

MSDS: [Download](#)

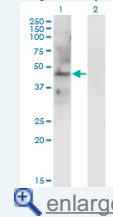
Datasheet: [Download](#)

Applications

Western Blot (Transfected lysate)

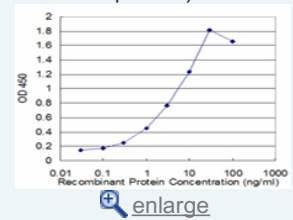
Application Image

Western Blot (Transfected lysate)

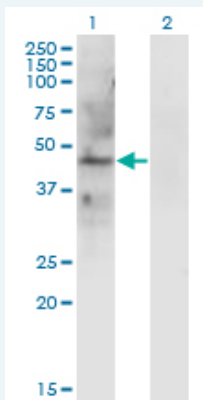


Western Blot (Recombinant protein)

Sandwich ELISA (Recombinant protein)



ELISA



Western Blot analysis of LAMP2 expression in transfected 293T cell line by LAMP2 monoclonal antibody (M01), clone 2G10.

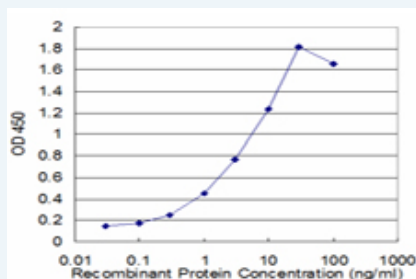
Lane 1: LAMP2 transfected lysate (Predicted MW: 45 KDa).
Lane 2: Non-transfected lysate.

[Protocol Download](#)

Western Blot (Recombinant protein)

[Protocol Download](#)

Sandwich ELISA (Recombinant protein)



Detection limit for recombinant GST tagged LAMP2 is approximately 0.03ng/ml as a capture antibody.

[Protocol Download](#)

ELISA

Gene Information

Entrez GeneID: [3920](#)

GeneBank [NM_013995](#)
Accession#:

Protein [NP_054701](#)
Accession#:

Gene Name: LAMP2

Gene Alias: CD107b,LAMPB,LGP110

Gene Description: lysosomal-associated membrane protein 2

Omim ID: [300257](#), [309060](#)

Gene Ontology: [Hyperlink](#)

Gene Summary: The protein encoded by this gene is a member of a family of membrane glycoproteins. This glycoprotein provides selectins with carbohydrate ligands. It may play a role in tumor cell metastasis. It may also function in the protection, maintenance, and adhesion of the lysosome. Alternative splicing of this gene results in multiple transcript variants

encoding distinct proteins. [provided by RefSeq]

Other Designations: OTTHUMP00000023943,OTTHUMP00000023944,lysosome-associated membrane protein 2

Gene Pathway

Lysosome

Related Disease

Cardiomegaly Cardiomyopathy, Dilated Cardiovascular Diseases Diabetes Mellitus, Type 2
Edema Genetic Predisposition to Disease

[服務條款](#) | [隱私權政策](#) | [著作及商標](#) | [網站地圖](#)

©2016 亞諾法生技股份有限公司 Abnova Corporation. 版權所有.