



SZABO SCANDIC

Part of Europa Biosite

Produktinformation



Forschungsprodukte & Biochemikalien



Zellkultur & Verbrauchsmaterial



Diagnostik & molekulare Diagnostik



Laborgeräte & Service

Weitere Information auf den folgenden Seiten!
See the following pages for more information!



Lieferung & Zahlungsart

siehe unsere [Liefer- und Versandbedingungen](#)

Zuschläge

- Mindermengenzuschlag
- Trockeneiszuschlag
- Gefahrgutzuschlag
- Expressversand

SZABO-SCANDIC HandelsgmbH

Quellenstraße 110, A-1100 Wien

T. +43(0)1 489 3961-0

F. +43(0)1 489 3961-7

mail@szabo-scandic.com

www.szabo-scandic.com

[linkedin.com/company/szaboscandic](https://www.linkedin.com/company/szaboscandic) 

LBR purified MaxPab mouse polyclonal antibody (B01P) MaxPab®

Catalog # : H00003930-B01P

規格 : [50 ug]

[List All](#)

Specification

Product Description: Mouse polyclonal antibody raised against a full-length human LBR protein.

Immunogen: LBR (NP_002287.2, 1 a.a. ~ 615 a.a) full-length human protein.

Sequence:
 MPSRKFDAGEVVRGRWPGSSLYEVEILSHDSTSQLYTVKYKDGTELEL
 KENDIKPLTSFRQRKGGSTSSPSRRRGRSRSRSRSPGRPPKSARRS
 ASASHQADIKEARREVEVKLTPLILKPFGNSISRYNGEPEHIERNDAPHKNT
 QEKFSLSQESSYIATQYSLRPRREEVKLEIDSKEEKYVAKELAVRTFEVT
 PIRAKDLEFGGVPGVFLIMFGLPVFLFLLLLMCKQKDPSSLNFPPLPALY
 ELWETRVFGVYLLWFLIQVLFYLLPIGKVVEGTPLIDGRRLKYRLNGFYA
 FILTSAVIGTSLFQGVVEFHVYSHFLQFALAATVFCVWLSVYLYMRSLKAP
 RNDLSPASSGNAVYDFFIGRELNPRIGTFDLKYFCELRPGLIGWVNLVM
 LLAEMKIQDRAVPSLAMILVNSFQLLYVVDALWNEEALLTTMDIHDGFGF
 MLAGDLVWVPFIYSFQAFYLVSHPNVSWPMASLIIVLKLCCGYVIFRGAN
 SQKNAFRKNPSDPKLAHLKTIHTSTGKNLLVSGWVWGFVRHPNYLGDLM
 ALAWSLPCGFNHILPYFYIIFTMLLVHREARDEYHCKKKYGVAWEKYCQ
 RVPYRIFPYIY

Host: Mouse

Reactivity: Human

Quality Control Testing: Antibody reactive against mammalian transfected lysate.

Storage Buffer: In 1x PBS, pH 7.4

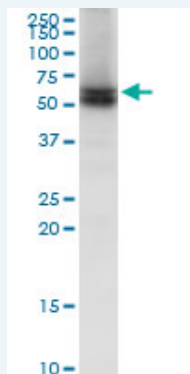
Storage Instruction: Store at -20°C or lower. Aliquot to avoid repeated freezing and thawing.

MSDS:  [Download](#)


Datasheet:  [Download](#)

Applications

Western Blot (Cell lysate)

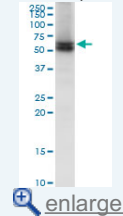



LBR MaxPab polyclonal antibody. Western Blot analysis of LBR expression in Jurkat.

 [Protocol Download](#)

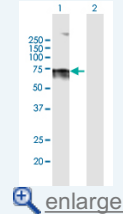
Application Image

Western Blot (Cell lysate)



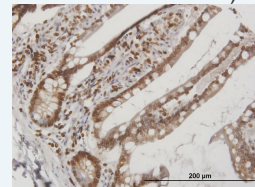
 [enlarge](#)

Western Blot (Transfected lysate)



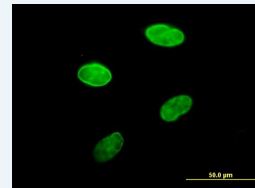
 [enlarge](#)

Immunohistochemistry (Formalin/PFA-fixed paraffin-embedded sections)



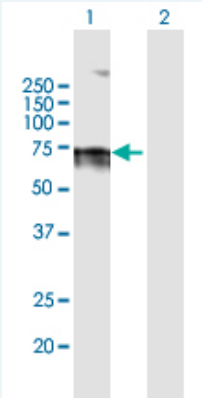
 [enlarge](#)

Immunofluorescence



 [enlarge](#)

Western Blot (Transfected lysate)



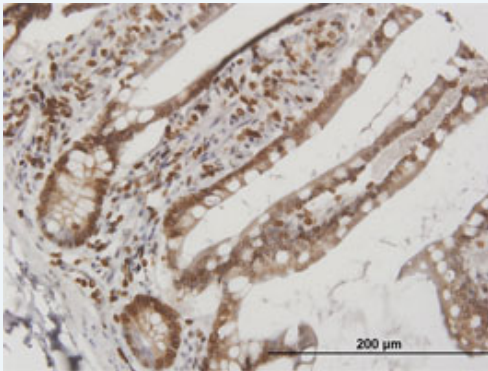
Western Blot analysis of LBR expression in transfected 293T cell line ([H00003930-T01](#)) by LBR MaxPab polyclonal antibody.


Lane 1: LBR transfected lysate(67.65 KDa).

Lane 2: Non-transfected lysate.

 [Protocol Download](#)

Immunohistochemistry (Formalin/PFA-fixed paraffin-embedded sections)

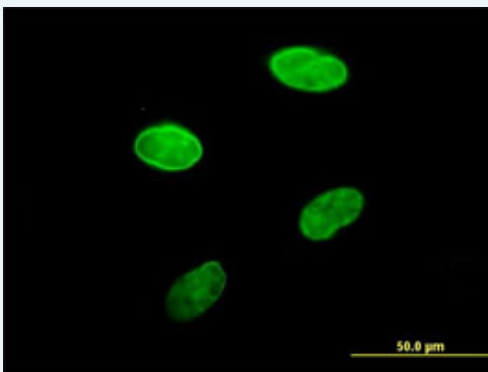



 [enlarge this image](#)

Immunoperoxidase of purified MaxPab antibody to LBR on formalin-fixed paraffin-embedded human small Intestine. [antibody concentration 3 ug/ml]

 [Protocol Download](#)

Immunofluorescence



 [enlarge this image](#)

Immunofluorescence of purified MaxPab antibody to LBR on HeLa cell. [antibody concentration 10 ug/ml]

 [Protocol Download](#)

Gene Information

Entrez GeneID: [3930](#)

GeneBank [NM_002296.2](#)

Accession#:

Protein [NP_002287.2](#)

Accession#:

Gene Name: LBR

Gene Alias: DHCR14B,FLJ43126,LMN2R,MGC9041,PHA

Gene Description: lamin B receptor

Omim ID: [169400](#), [215140](#), [600024](#)

Gene Ontology: [Hyperlink](#)

Gene Summary: The protein encoded by this gene belongs to the ERG4/ERG24 family. It localized in the nuclear envelope inner membrane and anchors the lamina and the heterochromatin to the membrane. It may mediate interaction between chromatin and lamin B. Mutations of this gene has been associated with autosomal recessive HEM/Greenberg skeletal dysplasia. Alternative splicing occurs at this locus and two transcript variants encoding the same protein have been identified. [provided by RefSeq]

Other Designations: OTTHUMP00000035631,integral nuclear envelope inner membrane protein

Related Disease

[Cardiovascular Diseases](#) [Diabetes Mellitus, Type 2](#) [Edema](#)

[服務條款](#) | [隱私權政策](#) | [著作及商標](#) | [網站地圖](#)

©2016 亞諾法生技股份有限公司 Abnova Corporation. 版權所有.