



# SZABO SCANDIC

Part of Europa Biosite

## Produktinformation



Forschungsprodukte & Biochemikalien



Zellkultur & Verbrauchsmaterial



Diagnostik & molekulare Diagnostik



Laborgeräte & Service

Weitere Information auf den folgenden Seiten!  
See the following pages for more information!



### Lieferung & Zahlungsart

siehe unsere [Liefer- und Versandbedingungen](#)

### Zuschläge

- Mindermengenzuschlag
- Trockeneiszuschlag
- Gefahrgutzuschlag
- Expressversand

### SZABO-SCANDIC HandelsgmbH

Quellenstraße 110, A-1100 Wien

T. +43(0)1 489 3961-0

F. +43(0)1 489 3961-7

[mail@szabo-scandic.com](mailto:mail@szabo-scandic.com)

[www.szabo-scandic.com](http://www.szabo-scandic.com)

[linkedin.com/company/szaboscandic](https://www.linkedin.com/company/szaboscandic) 

## LCK purified MaxPab rabbit polyclonal antibody (D01P) MaxPab®

Catalog # : H00003932-D01P

規格 : [ 100 ug ]

[List All](#)

### Specification

**Product Description:** Rabbit polyclonal antibody raised against a full-length human LCK protein.

**Immunogen:** LCK (AAH13200.1, 1 a.a. ~ 539 a.a) full-length human protein.

**Sequence:**  
 MGCGCSSHPEDDWMENIDVCENCHYPIVPLDGKGTLLIRNGSEVRDPLV  
 TYEGSNPPASPLQDNLVIALHSYEP SHDGLGFEKGEQLRILEQSGEWW  
 KAQSLTTGQEGFIPFNFAKANSLEPEPWFFKNLSRKDAERQLLAPGNT  
 HGSFLIRESESTAGSFSLSVRDFDQNGGEVWKHYKIRNLDNGGFYISPRIT  
 FPGLHELVRHYTNASDGLCTRLSRPCQTQKPQKPWWEDEWEVPRETL  
 KLVERLGAGQFGEVWMGYNGHTKVAVKSLKQGSMPDAFLAEANLM  
 KQLQHQRVRLVAVVTQEPIYIITEYMENDTLLDSQLEEKGLGASPWGNL  
 GQQLLLPTGSLVDFLKTTPSGIKLTINKLLDMAAQIAEGMAFIEERNYIHRD  
 LRAANILVSDTLCKIADFGLARLIEDNEYTAREGAKFPIKWTAPEAINYGT  
 FTIKSDVWSFGILLTEIVTHGRIPYPGMTNPEVIQNLERGYRMRPDNCPE  
 ELYQLMRLCWKERPEDRPTFDYLRVLEDFFTATEGQYQPQP

**Host:** Rabbit

**Reactivity:** Human

**Quality Control Testing:** Antibody reactive against mammalian transfected lysate.

**Storage Buffer:** In 1x PBS, pH 7.4

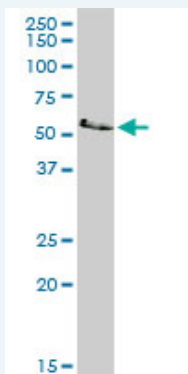
**Storage Instruction:** Store at -20°C or lower. Aliquot to avoid repeated freezing and thawing.

**MSDS:** [Download](#)

**Datasheet:** [Download](#)

### Applications

#### Western Blot (Cell lysate)



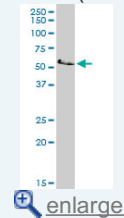
LCK MaxPab rabbit polyclonal antibody. Western Blot analysis of LCK expression in Jurkat.

[Protocol Download](#)

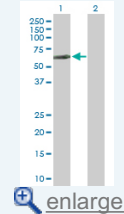
#### Western Blot (Transfected lysate)

### Application Image

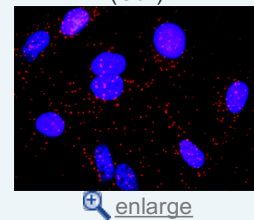
#### Western Blot (Cell lysate)

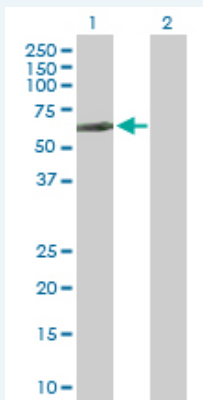


#### Western Blot (Transfected lysate)



#### In situ Proximity Ligation Assay (Cell)



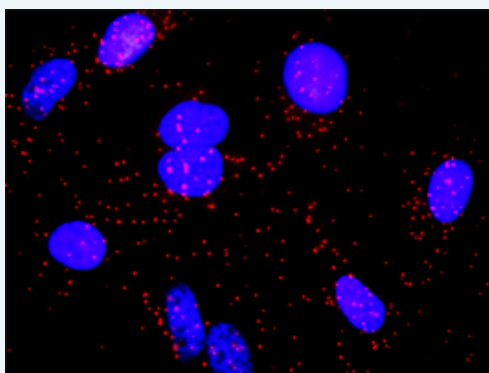


Western Blot analysis of LCK expression in transfected 293T cell line ([H00003932-T02](#)) by LCK MaxPab polyclonal antibody.

Lane 1: LCK transfected lysate(61.20 KDa).  
Lane 2: Non-transfected lysate.

Protocol Download

### *In situ* Proximity Ligation Assay (Cell)



Proximity Ligation Analysis of protein-protein interactions between LCK and CD55. HeLa cells were stained with anti-LCK rabbit purified polyclonal 1:1200 and anti-CD55 mouse monoclonal antibody 1:50. Each red dot represents the detection of protein-protein interaction complex, and nuclei were counterstained with DAPI (blue).

### Gene Information

Entrez GeneID: [3932](#)

GeneBank [BC013200.1](#)  
Accession#:

Protein [AAH13200.1](#)  
Accession#:

Gene Name: LCK

Gene Alias: YT16,p56lck,pp58lck

Gene Description: lymphocyte-specific protein tyrosine kinase

Omim ID: [153390](#)

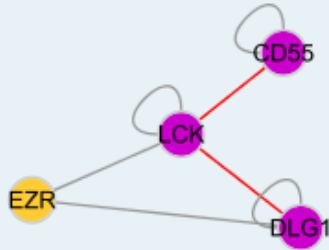
Gene Ontology: [Hyperlink](#)

**Gene Summary:** This gene is a member of the Src family of protein tyrosine kinases (PTKs). The encoded protein is a key signaling molecule in the selection and maturation of developing T-cells. It contains N-terminal sites for myristylation and palmitoylation, a PTK domain, and SH2 and SH3 domains which are involved in mediating protein-protein interactions with phosphotyrosine-containing and proline-rich motifs, respectively. The protein localizes to the plasma membrane and

pericentrosomal vesicles, and binds to cell surface receptors, including CD4 and CD8, and other signaling molecules. Multiple alternatively spliced variants, encoding the same protein, have been described. [provided by RefSeq]

**Other Designations:** T-lymphocyte specific protein tyrosine kinase p56lck,p56(LSTRA) protein-tyrosine kinase,protein tyrosine kinase,proto-oncogene tyrosine-protein kinase LCK

### Interactome



### Gene Pathway

[Natural killer cell mediated cytotoxicity](#) [Primary immunodeficiency](#)  
[T cell receptor signaling pathway](#)

### Related Disease

[HIV Infections](#) [Tobacco Use Disorder](#)