



SZABO SCANDIC

Part of Europa Biosite

Produktinformation



Forschungsprodukte & Biochemikalien



Zellkultur & Verbrauchsmaterial



Diagnostik & molekulare Diagnostik



Laborgeräte & Service

Weitere Information auf den folgenden Seiten!
See the following pages for more information!



Lieferung & Zahlungsart

siehe unsere [Liefer- und Versandbedingungen](#)

Zuschläge

- Mindermengenzuschlag
- Trockeneiszuschlag
- Gefahrgutzuschlag
- Expressversand

SZABO-SCANDIC HandelsgmbH

Quellenstraße 110, A-1100 Wien

T. +43(0)1 489 3961-0

F. +43(0)1 489 3961-7

mail@szabo-scandic.com

www.szabo-scandic.com

[linkedin.com/company/szaboscandic](https://www.linkedin.com/company/szaboscandic) 

LCK monoclonal antibody (M11), clone 3H5

Catalog # : H00003932-M11

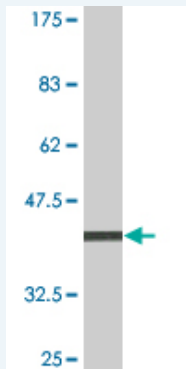
規格 : [100 ug]

[List All](#)

Specification

| | |
|-----------------------------|---|
| Product Description: | Mouse monoclonal antibody raised against a partial recombinant LCK. |
| Immunogen: | LCK (AAH13200, 1 a.a. ~ 100 a.a) partial recombinant protein with GST tag. MW of the GST tag alone is 26 KDa. |
| Sequence: | MGCGCSSHPEDDWMENIDVCENCHYPVPLDGKGTLLIRNGSEVRDPLV TYEGSNPPASPLQDNLVIALHSYEP SHDGLGF EKGEQLRILEQSGEWW KA |
| Host: | Mouse |
| Reactivity: | Human |
| Isotype: | IgG2a Kappa |

Quality Control Testing: Antibody Reactive Against Recombinant Protein.



Western Blot detection against Immunogen (36.41 KDa) .

Storage Buffer: In 1x PBS, pH 7.4

Storage Instruction: Store at -20°C or lower. Aliquot to avoid repeated freezing and thawing.

MSDS: [Download](#)

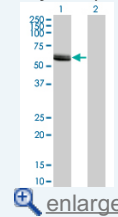
Datasheet: [Download](#)

Applications

Western Blot (Transfected lysate)

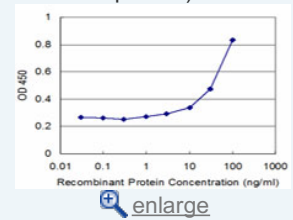
Application Image

Western Blot (Transfected lysate)

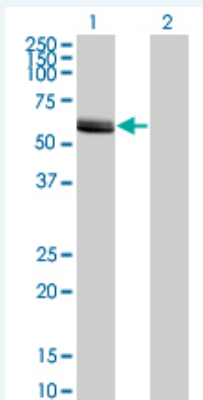


Western Blot (Recombinant protein)

Sandwich ELISA (Recombinant protein)



ELISA



Western Blot analysis of LCK expression in transfected 293T cell line by LCK monoclonal antibody (M11), clone 3H5.

Lane 1: LCK transfected lysate(58.001 KDa).

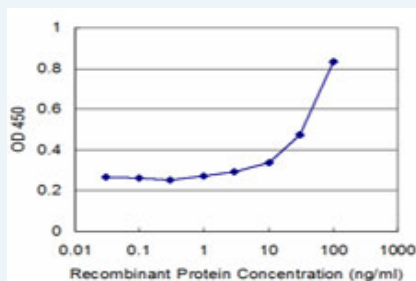
Lane 2: Non-transfected lysate.

[Protocol Download](#)

Western Blot (Recombinant protein)

[Protocol Download](#)

Sandwich ELISA (Recombinant protein)



Detection limit for recombinant GST tagged LCK is approximately 3ng/ml as a capture antibody.

[Protocol Download](#)

ELISA

Gene Information

Entrez GeneID: [3932](#)

GeneBank [BC013200](#)

Accession#:

Protein [AAH13200](#)

Accession#:

Gene Name: LCK

Gene Alias: YT16,p56lck,pp58lck

Gene Description: lymphocyte-specific protein tyrosine kinase

Description:

Omim ID: [153390](#)

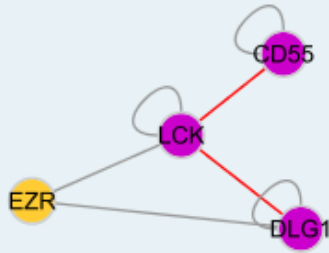
Gene Ontology: [Hyperlink](#)

Gene Summary: This gene is a member of the Src family of protein tyrosine kinases (PTKs). The encoded protein is a key signaling molecule in the selection and maturation of developing T-cells. It contains N-terminal sites for myristylation and palmitoylation, a PTK domain, and SH2 and SH3 domains which are involved in mediating protein-protein

interactions with phosphotyrosine-containing and proline-rich motifs, respectively. The protein localizes to the plasma membrane and pericentrosomal vesicles, and binds to cell surface receptors, including CD4 and CD8, and other signaling molecules. Multiple alternatively spliced variants, encoding the same protein, have been described. [provided by RefSeq]

Other Designations: T-lymphocyte specific protein tyrosine kinase p56lck,p56(LSTRA) protein-tyrosine kinase,protein tyrosine kinase,proto-oncogene tyrosine-protein kinase LCK

Interactome



Gene Pathway

[Natural killer cell mediated cytotoxicity](#) [Primary immunodeficiency](#)
[T cell receptor signaling pathway](#)

Related Disease

[HIV Infections](#) [Tobacco Use Disorder](#)

[服務條款](#) | [隱私權政策](#) | [著作及商標](#) | [網站地圖](#)

©2016 亞諾法生技股份有限公司 Abnova Corporation. 版權所有.