



SZABO SCANDIC

Part of Europa Biosite

Produktinformation



Forschungsprodukte & Biochemikalien



Zellkultur & Verbrauchsmaterial



Diagnostik & molekulare Diagnostik



Laborgeräte & Service

Weitere Information auf den folgenden Seiten!
See the following pages for more information!



Lieferung & Zahlungsart

siehe unsere [Liefer- und Versandbedingungen](#)

Zuschläge

- Mindermengenzuschlag
- Trockeneiszuschlag
- Gefahrgutzuschlag
- Expressversand

SZABO-SCANDIC HandelsgmbH

Quellenstraße 110, A-1100 Wien

T. +43(0)1 489 3961-0

F. +43(0)1 489 3961-7

mail@szabo-scandic.com

www.szabo-scandic.com

[linkedin.com/company/szaboscandic](https://www.linkedin.com/company/szaboscandic) 

LCP1 MaxPab mouse polyclonal antibody (B01) MaxPab®

Catalog # : H00003936-B01

規格 : [50 uL]

[List All](#)

Specification

Product Description: Mouse polyclonal antibody raised against a full-length human LCP1 protein.

Immunogen: LCP1 (NP_002289.1, 1 a.a. ~ 627 a.a) full-length human protein.

Sequence:
 MARGSVSDEEMMELREAFKVDTDGNGYISFNELNDLFKAACLPLPGYR
 VREITENLMATGDLDDQDGRISFDEFIKIFHGLKSTDVAKTFRKAINKKEGIC
 AIGGTSEQSSVGTQHSYSEEEKYAFVNWINKALENDPDCRHHVPMNPNTN
 DLFNAVGDGIVLCKMINLSVPDTIDERTINKKLTPTFTIQENLNLALNSASAI
 GCHVNVIGAEDLKEGKPYLVLLGLLWQVIKIGLFADIELSRNEALIALREGE
 SLEDLMKLSPEELLRWANYHLENAGCNKIGNFSTDIKDSKAYYHLEQV
 APKGDEEGVPAVIDMSGLREKDDIQRAECMLQQAERLGCRCQFVTATD
 VVRGNPKLNLAFIANLFRNYPALHKPENQDIDWGALEGETREERTFRNW
 MNSLGVNPRVNHLYSDLSDALVIFQLYEKIKVPVDWNRVKNPPYPKLGGN
 MKKLENCNYAVELGKNQAKFSLVGIGGQDLNEGNRTLTLALIWQLMRRY
 TLNILEEIGGGQKVNDIIVNWNVNETLREAEKSSSISFFKDPKISTSLPVLDL
 IDAIQPGSINYDLLKTENLNDDEKLNNAKYAISMARIGARVYALPEDLVEV
 NPKMVMVTFACLMGKGMKRV

Host: Mouse

Reactivity: Human

Quality Control Testing: Antibody reactive against mammalian transfected lysate.

Storage Buffer: No additive

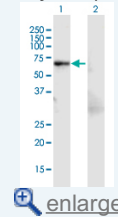
Storage Instruction: Store at -20°C or lower. Aliquot to avoid repeated freezing and thawing.


Note: For IHC and IF applications, antibody purification with Protein A will be needed prior to use.

Datasheet:  [Download](#)

Application Image

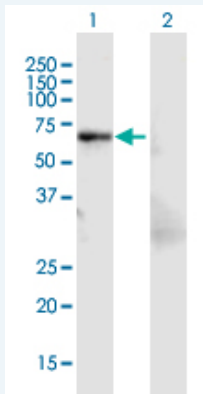
Western Blot (Transfected lysate)



 [enlarge](#)

Applications

Western Blot (Transfected lysate)



Western Blot analysis of LCP1 expression in transfected 293T cell line (H00003936-T01)

by LCP1 MaxPab polyclonal antibody.

Lane 1: LCP1 transfected lysate(70.3 KDa).

Lane 2: Non-transfected lysate.

 [Protocol Download](#)

Gene Information

Entrez GeneID: [3936](#)

GeneBank [NM_002298.2](#)

Accession#:

Protein [NP_002289.1](#)

Accession#:

Gene Name: LCP1

Gene Alias: CP64,DKFZp781A23186,FLJ25423,FLJ26114,FLJ39956,L-PLASTIN,LC64P,LPL,PLS2

Gene Description: lymphocyte cytosolic protein 1 (L-plastin)

Omim ID: [153430](#)

Gene Ontology: [Hyperlink](#)

Gene Summary: Plastins are a family of actin-binding proteins that are conserved throughout eukaryote evolution and expressed in most tissues of higher eukaryotes. In humans, two ubiquitous plastin isoforms (L and T) have been identified. Plastin 1 (otherwise known as Fimbrin) is a third distinct plastin isoform which is specifically expressed at high levels in the small intestine. The L isoform is expressed only in hemopoietic cell lineages, while the T isoform has been found in all other normal cells of solid tissues that have replicative potential (fibroblasts, endothelial cells, epithelial cells, melanocytes, etc.). However, L-plastin has been found in many types of malignant human cells of non-hemopoietic origin suggesting that its expression is induced accompanying tumorigenesis in solid tissues. [provided by RefSeq]

Other Designations: L-plastin,L-plastin (Lymphocyte cytosolic protein 1) (LCP-1) (LC64P),Lymphocyte cytosolic protein-1 (plasmin),OTTHUMP00000018362,bA139H14.1 (lymphocyte cytosolic protein 1 (L-plastin)),plastin 2

Related Disease

[Diabetes Mellitus. Type 2 Genetic Predisposition to Disease](#)

[服務條款](#) | [隱私權政策](#) | [著作及商標](#) | [網站地圖](#)

©2016 亞諾法生技股份有限公司 Abnova Corporation. 版權所有.