



SZABO SCANDIC

Part of Europa Biosite

Produktinformation



Forschungsprodukte & Biochemikalien



Zellkultur & Verbrauchsmaterial



Diagnostik & molekulare Diagnostik



Laborgeräte & Service

Weitere Information auf den folgenden Seiten!
See the following pages for more information!



Lieferung & Zahlungsart

siehe unsere [Liefer- und Versandbedingungen](#)

Zuschläge

- Mindermengenzuschlag
- Trockeneiszuschlag
- Gefahrgutzuschlag
- Expressversand

SZABO-SCANDIC HandelsgmbH

Quellenstraße 110, A-1100 Wien

T. +43(0)1 489 3961-0

F. +43(0)1 489 3961-7

mail@szabo-scandic.com

www.szabo-scandic.com

[linkedin.com/company/szaboscandic](https://www.linkedin.com/company/szaboscandic) 

LCP2 (Human) Matched Antibody Pair

Catalog # : H00003937-AP22

規格 : [1 Set]

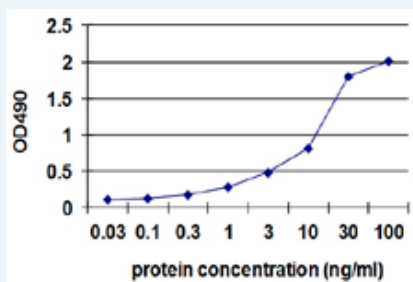
[List All](#)

Specification

Product Description: This antibody pair set comes with matched antibody pair to detect and quantify protein level of human LCP2.

Reactivity: Human

Quality Control Testing: Standard curve using recombinant protein (H00003937-P02) as an analyte.



Sandwich ELISA detection sensitivity ranging from 0.1 ng/ml to 100 ng/ml.

Supplied Product: Antibody pair set content:
 1. Capture antibody: rabbit MaxPab® affinity purified polyclonal anti-LCP2 (100 ug)
 2. Detection antibody: mouse purified polyclonal anti-LCP2 (20 ug)
 *Reagents are sufficient for at least 1-2 x 96 well plates using recommended protocols.

Storage Instruction: Store reagents of the antibody pair set at -20°C or lower. Please aliquot to avoid repeated freeze thaw cycle. Reagents should be returned to -20°C storage immediately after use.

Applications

ELISA Pair (Recombinant protein)

 [Protocol Download](#)

Gene Information

Entrez GeneID: [3937](#)

Gene Name: LCP2

Gene Alias: SLP-76,SLP76

Gene Description: lymphocyte cytosolic protein 2 (SH2 domain containing leukocyte protein of 76kDa)

Omim ID: [601603](#)

Gene Ontology: [Hyperlink](#)

Gene Summary: SLP-76 was originally identified as a substrate of the ZAP-70 protein tyrosine kinase following T cell receptor (TCR) ligation in the leukemic T

cell line Jurkat. The SLP-76 locus has been localized to human chromosome 5q33 and the gene structure has been partially characterized in mice. The human and murine cDNAs both encode 533 amino acid proteins that are 72% identical and comprised of three modular domains. The NH2-terminus contains an acidic region that includes a PEST domain and several tyrosine residues which are phosphorylated following TCR ligation. SLP-76 also contains a central proline-rich domain and a COOH-terminal SH2 domain. A number of additional proteins have been identified that associate with SLP-76 both constitutively and inducibly following receptor ligation, supporting the notion that SLP-76 functions as an adaptor or scaffold protein. Studies using SLP-76 deficient T cell lines or mice have provided strong evidence that SLP-76 plays a positive role in promoting T cell development and activation as well as mast cell and platelet function. [provided by RefSeq]

Other Designations: 76 kDa tyrosine phosphoprotein, SH2 domain-containing leukocyte protein of 76kD, lymphocyte cytosolic protein 2, lymphocyte cytosolic protein 2 (SH2 domain-containing leukocyte protein of 76kD)

Gene Pathway

[Fc epsilon RI signaling pathway](#) [Natural killer cell mediated cytotoxicity](#)
[T cell receptor signaling pathway](#)

Related Disease

[Disease Progression](#) [Disease Susceptibility](#) [HIV Infections](#) [Lymphedema](#)

[服務條款](#) | [隱私權政策](#) | [著作及商標](#) | [網站地圖](#)

©2016 亞諾法生技股份有限公司 Abnova Corporation. 版權所有.