



SZABO SCANDIC

Part of Europa Biosite

Produktinformation



Forschungsprodukte & Biochemikalien



Zellkultur & Verbrauchsmaterial



Diagnostik & molekulare Diagnostik



Laborgeräte & Service

Weitere Information auf den folgenden Seiten!
See the following pages for more information!



Lieferung & Zahlungsart

siehe unsere [Liefer- und Versandbedingungen](#)

Zuschläge

- Mindermengenzuschlag
- Trockeneiszuschlag
- Gefahrgutzuschlag
- Expressversand

SZABO-SCANDIC HandelsgmbH

Quellenstraße 110, A-1100 Wien

T. +43(0)1 489 3961-0

F. +43(0)1 489 3961-7

mail@szabo-scandic.com

www.szabo-scandic.com

[linkedin.com/company/szaboscandic](https://www.linkedin.com/company/szaboscandic) 

LCP2 MaxPab mouse polyclonal antibody (B01) MaxPab®

Catalog # : H00003937-B01

規格 : [50 uL]

[List All](#)

Specification

Product Description: Mouse polyclonal antibody raised against a full-length human LCP2 protein.

Immunogen: LCP2 (AAH16618.1, 1 a.a. ~ 533 a.a) full-length human protein.

Sequence:
 MALRNVPFRSEVLGWDPSLADYFKKLNKDCYKAVKKYHIDGARFLNL
 TENDIQKFPKLRVPILSKLSQEIKNNEERRSIFTRKQVPRFPEETESHEED
 NGWSSFEEDDYESPNDQDGEDDGDYESPNEEEEEAPVEDDADYEP
 PSNDEEALQNSILPAKPFNSNSMYIDRPPSGKTPQQPPVPPQRPMAALP
 PPPAGRNHSPLPPPQTNHEEPSRSRHNHTAKLPAPSIDRSTKPPDRSLA
 PFDREPFTLGKKPPFSDKPSIPAGRSLGEHLPKIQKPPLPPTTERHERSS
 PLPGKKPPVPKHGWGPDREDDVHQRPLPQPALLPMSNTFSPRS
 TKPSPMNPLPSSHMPGAFSESNSFPQSASLPPYFSQGPSNRPPIRAEG
 RNFPLPLPNKPRPPSPAEENSLNEEWVYSYITRPEAEALRKNQDGT
 LVRDSSKTTTNPYVLMVLYKDKVYNIQIRYQKESQVYLLGTGLRGKEDF
 LSVSDIIDYFRKMPLLLIDGKNRGSRYQCTLTAAAGYP

Host: Mouse

Reactivity: Human

Quality Control Testing: Antibody reactive against mammalian transfected lysate.

Storage Buffer: No additive

Storage Instruction: Store at -20°C or lower. Aliquot to avoid repeated freezing and thawing.

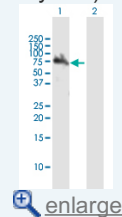
Note: For IHC and IF applications, antibody purification with Protein A will be needed prior to use.

MSDS: [Download](#)

Datasheet: [Download](#)

Application Image

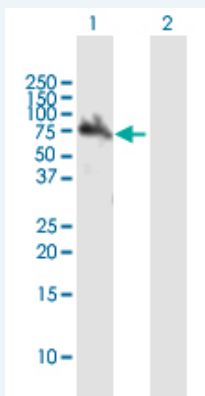
Western Blot (Transfected lysate)



[enlarge](#)

Applications

Western Blot (Transfected lysate)



Western Blot analysis of LCP2 expression in transfected 293T cell line (H00003937-T01)

by LCP2 MaxPab polyclonal antibody.

Lane 1: LCP2 transfected lysate(58.63 KDa).

Lane 2: Non-transfected lysate.

 [Protocol Download](#)

Gene Information

Entrez GeneID: [3937](#)

**GeneBank
Accession#:** [BC016618.1](#)

**Protein
Accession#:** [AAH16618.1](#)

Gene Name: LCP2

Gene Alias: SLP-76,SLP76

**Gene
Description:** lymphocyte cytosolic protein 2 (SH2 domain containing leukocyte protein of 76kDa)

Omim ID: [601603](#)

Gene Ontology: [Hyperlink](#)

Gene Summary: SLP-76 was originally identified as a substrate of the ZAP-70 protein tyrosine kinase following T cell receptor (TCR) ligation in the leukemic T cell line Jurkat. The SLP-76 locus has been localized to human chromosome 5q33 and the gene structure has been partially characterized in mice. The human and murine cDNAs both encode 533 amino acid proteins that are 72% identical and comprised of three modular domains. The NH2-terminus contains an acidic region that includes a PEST domain and several tyrosine residues which are phosphorylated following TCR ligation. SLP-76 also contains a central proline-rich domain and a COOH-terminal SH2 domain. A number of additional proteins have been identified that associate with SLP-76 both constitutively and inducibly following receptor ligation, supporting the notion that SLP-76 functions as an adaptor or scaffold protein. Studies using SLP-76 deficient T cell lines or mice have provided strong evidence that SLP-76 plays a positive role in promoting T cell development and activation as well as mast cell and platelet function. [provided by RefSeq]

**Other
Designations:** 76 kDa tyrosine phosphoprotein,SH2 domain-containing leukocyte protein of 76kD,lymphocyte cytosolic protein 2,lymphocyte cytosolic protein 2 (SH2 domain-containing leukocyte protein of 76kD)

Gene Pathway

[Fc epsilon RI signaling pathway](#) [Natural killer cell mediated cytotoxicity](#)
[T cell receptor signaling pathway](#)

Related Disease

[Disease Progression](#) [Disease Susceptibility](#) [HIV Infections](#) [Lymphedema](#)