



# SZABO SCANDIC

Part of Europa Biosite

## Produktinformation



Forschungsprodukte & Biochemikalien



Zellkultur & Verbrauchsmaterial



Diagnostik & molekulare Diagnostik



Laborgeräte & Service

Weitere Information auf den folgenden Seiten!  
See the following pages for more information!



### Lieferung & Zahlungsart

siehe unsere [Liefer- und Versandbedingungen](#)

### Zuschläge

- Mindermengenzuschlag
- Trockeneiszuschlag
- Gefahrgutzuschlag
- Expressversand

### SZABO-SCANDIC HandelsgmbH

Quellenstraße 110, A-1100 Wien

T. +43(0)1 489 3961-0

F. +43(0)1 489 3961-7

[mail@szabo-scandic.com](mailto:mail@szabo-scandic.com)

[www.szabo-scandic.com](http://www.szabo-scandic.com)

[linkedin.com/company/szaboscandic](https://www.linkedin.com/company/szaboscandic) 

## LCP2 purified MaxPab mouse polyclonal antibody (B01P) MaxPab®

Catalog # : H00003937-B01P

規格 : [ 50 ug ]

[List All](#)

### Specification

**Product Description:** Mouse polyclonal antibody raised against a full-length human LCP2 protein.

**Immunogen:** LCP2 (NP\_005556, 1 a.a. ~ 533 a.a) full-length human protein.

**Sequence:**  
 MALRNVPFRSEVLGWDPSLADYFKKLNKDCYKAVKKYHIDGARFLNL  
 TENDIQKFPKLRVPILSKLSQEIKNKNEERRSIFTRKPVPRFPEETESHEED  
 NGGWSSFEEDDYESPNDQDGEDDGDYESPNEEEEEAPVEDDADYEPP  
 PSNDEEALQNSILPAKPFNSNSMYIDRPPSGKTPQQPPVPPQRPMAALP  
 PPPAGRNHSPLPPPQTNHEEPSRSRNHKTAKLPAPSIDRSTKPPLDRSLA  
 PFDREPFTLGKKPPFSDKPSIPAGRSLGEHLPKIQKPLPPTTERHERSS  
 PLPGKKPPVPKHGWGPDREDDVHQRPLPQPALLPMSNTFSPRS  
 TKPSPMNPLPSSHMPGAFSESNSFPQSASLPPYFSQGSPNRPPIRAEG  
 RNFPLPLPNKPRPPSPAEEEEENSLNEEWVYSYITRPEAEALRKNQDGT  
 LVRDSSKTTTNPYVLMVLYKDKVYNIQIRYQKESQVYLLGTGLRGKEDF  
 LSVSDIIDYFRKMPLLLIDGKNRGSRYQCTLTHAAGYP

**Host:** Mouse

**Reactivity:** Human

**Quality Control Testing:** Antibody reactive against mammalian transfected lysate.

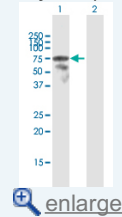
**Storage Buffer:** In 1x PBS, pH 7.4

**Storage Instruction:** Store at -20°C or lower. Aliquot to avoid repeated freezing and thawing.

**Datasheet:**  [Download](#)

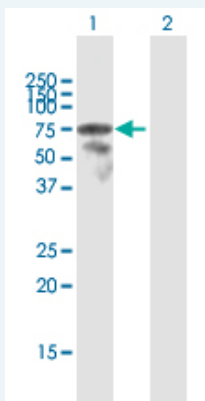
### Application Image

Western Blot (Transfected lysate)




### Applications

Western Blot (Transfected lysate)



Western Blot analysis of LCP2 expression in transfected 293T cell line (H00003937-T01) by LCP2 MaxPab polyclonal antibody.

Lane 1: LCP2 transfected lysate(58.63 KDa).  
 Lane 2: Non-transfected lysate.

 [Protocol Download](#)

## Gene Information

Entrez GeneID: [3937](#)

GeneBank  
Accession#: [NM\\_005565](#)

Protein  
Accession#: [NP\\_005556](#)

Gene Name: LCP2

Gene Alias: SLP-76,SLP76

Gene  
Description: lymphocyte cytosolic protein 2 (SH2 domain containing leukocyte protein of 76kDa)

Omim ID: [601603](#)

Gene Ontology: [Hyperlink](#)

**Gene Summary:** SLP-76 was originally identified as a substrate of the ZAP-70 protein tyrosine kinase following T cell receptor (TCR) ligation in the leukemic T cell line Jurkat. The SLP-76 locus has been localized to human chromosome 5q33 and the gene structure has been partially characterized in mice. The human and murine cDNAs both encode 533 amino acid proteins that are 72% identical and comprised of three modular domains. The NH2-terminus contains an acidic region that includes a PEST domain and several tyrosine residues which are phosphorylated following TCR ligation. SLP-76 also contains a central proline-rich domain and a COOH-terminal SH2 domain. A number of additional proteins have been identified that associate with SLP-76 both constitutively and inducibly following receptor ligation, supporting the notion that SLP-76 functions as an adaptor or scaffold protein. Studies using SLP-76 deficient T cell lines or mice have provided strong evidence that SLP-76 plays a positive role in promoting T cell development and activation as well as mast cell and platelet function. [provided by RefSeq]

**Other  
Designations:** 76 kDa tyrosine phosphoprotein,SH2 domain-containing leukocyte protein of 76kD,lymphocyte cytosolic protein 2,lymphocyte cytosolic protein 2 (SH2 domain-containing leukocyte protein of 76kD)

## Gene Pathway

[Fc epsilon RI signaling pathway](#) [Natural killer cell mediated cytotoxicity](#)  
[T cell receptor signaling pathway](#)

## Related Disease

[Disease Progression](#) [Disease Susceptibility](#) [HIV Infections](#) [Lymphedema](#)