



SZABO SCANDIC

Part of Europa Biosite

Produktinformation



Forschungsprodukte & Biochemikalien



Zellkultur & Verbrauchsmaterial



Diagnostik & molekulare Diagnostik



Laborgeräte & Service

Weitere Information auf den folgenden Seiten!
See the following pages for more information!



Lieferung & Zahlungsart

siehe unsere [Liefer- und Versandbedingungen](#)

Zuschläge

- Mindermengenzuschlag
- Trockeneiszuschlag
- Gefahrgutzuschlag
- Expressversand

SZABO-SCANDIC HandelsgmbH

Quellenstraße 110, A-1100 Wien

T. +43(0)1 489 3961-0

F. +43(0)1 489 3961-7

mail@szabo-scandic.com

www.szabo-scandic.com

[linkedin.com/company/szaboscandic](https://www.linkedin.com/company/szaboscandic) 

LCP2 293T Cell Transient Overexpression Lysate(Denatured)

Catalog # : H00003937-T01

規格 : [100 uL]

[List All](#)

Specification

Transfected Cell Line: 293T

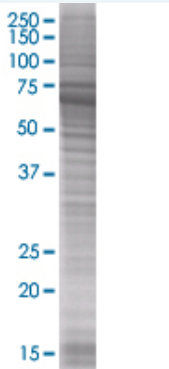
Plasmid: pCMV-LCP2 full-length

Host: Human

Theoretical MW (kDa): 60.2

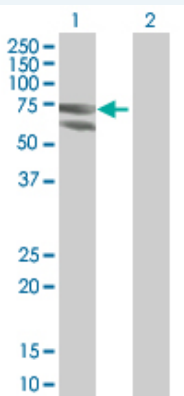
Quality Control Testing: Transient overexpression cell lysate was tested with Anti-LCP2 antibody (H00003937-B01) by Western Blots.

SDS-PAGE Gel



LCP2 transfected lysate

Western Blot



Lane 1: LCP2 transfected lysate (60.2 KDa).

Lane 2: Non-transfected lysate.

Storage Buffer: 1X Sample Buffer (50 mM Tris-HCl, 2% SDS, 10% glycerol, 300 mM 2-mercaptoethanol, 0.01% Bromophenol blue)

Storage Instruction: Store at -80°C. Aliquot to avoid repeated freezing and thawing.

MSDS:  [Download](#)

Applications

Western Blot

Gene Information

Entrez GeneID: [3937](#)

GeneBank Accession#: [NM_005565](#)

Protein Accession#: [NP_005556](#)

Gene Name: LCP2

Gene Alias: SLP-76,SLP76

Gene Description: lymphocyte cytosolic protein 2 (SH2 domain containing leukocyte protein of 76kDa)

Omim ID: [601603](#)

Gene Ontology: [Hyperlink](#)

Gene Summary: SLP-76 was originally identified as a substrate of the ZAP-70 protein tyrosine kinase following T cell receptor (TCR) ligation in the leukemic T cell line Jurkat. The SLP-76 locus has been localized to human chromosome 5q33 and the gene structure has been partially characterized in mice. The human and murine cDNAs both encode 533 amino acid proteins that are 72% identical and comprised of three modular domains. The NH2-terminus contains an acidic region that includes a PEST domain and several tyrosine residues which are phosphorylated following TCR ligation. SLP-76 also contains a central proline-rich domain and a COOH-terminal SH2 domain. A number of additional proteins have been identified that associate with SLP-76 both constitutively and inducibly following receptor ligation, supporting the notion that SLP-76 functions as an adaptor or scaffold protein. Studies using SLP-76 deficient T cell lines or mice have provided strong evidence that SLP-76 plays a positive role in promoting T cell development and activation as well as mast cell and platelet function. [provided by RefSeq]

Other Designations: 76 kDa tyrosine phosphoprotein,SH2 domain-containing leukocyte protein of 76kD,lymphocyte cytosolic protein 2,lymphocyte cytosolic protein 2 (SH2 domain-containing leukocyte protein of 76kD)

Gene Pathway

[Fc epsilon RI signaling pathway](#) [Natural killer cell mediated cytotoxicity](#)
[T cell receptor signaling pathway](#)

Related Disease

[Disease Progression](#) [Disease Susceptibility](#) [HIV Infections](#) [Lymphedema](#)