



SZABO SCANDIC

Part of Europa Biosite

Produktinformation



Forschungsprodukte & Biochemikalien



Zellkultur & Verbrauchsmaterial



Diagnostik & molekulare Diagnostik



Laborgeräte & Service

Weitere Information auf den folgenden Seiten!
See the following pages for more information!



Lieferung & Zahlungsart

siehe unsere [Liefer- und Versandbedingungen](#)

Zuschläge

- Mindermengenzuschlag
- Trockeneiszuschlag
- Gefahrgutzuschlag
- Expressversand

SZABO-SCANDIC HandelsgmbH

Quellenstraße 110, A-1100 Wien

T. +43(0)1 489 3961-0

F. +43(0)1 489 3961-7

mail@szabo-scandic.com

www.szabo-scandic.com

[linkedin.com/company/szaboscandic](https://www.linkedin.com/company/szaboscandic) 

LCT monoclonal antibody (M01), clone 3H6

Catalog # : H00003938-M01

規格 : [100 ug]

[List All](#)

Specification

Product Description: Mouse monoclonal antibody raised against a partial recombinant LCT.

Immunogen: LCT (NP_002290, 32 a.a. ~ 129 a.a) partial recombinant protein with GST tag. MW of the GST tag alone is 26 KDa.

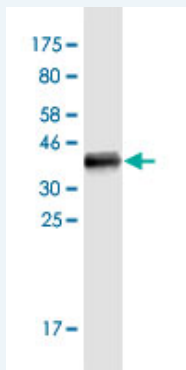
Sequence: AGPLTNDLLHNL SGLLG DQSSNFVAGDKDMYVCHQPLPTFLPEYFSSLH ASQITHYKVFLSWAQLLPAGSTQNPDEKTVQCYRRLKALKTARLQPMV

Host: Mouse

Reactivity: Human

Isotype: IgG1 Kappa

Quality Control Testing: Antibody Reactive Against Recombinant Protein.



Western Blot detection against Immunogen (36.52 KDa) .

Storage Buffer: In 1x PBS, pH 7.4

Storage Instruction: Store at -20°C or lower. Aliquot to avoid repeated freezing and thawing.

Datasheet:  [Download](#)

Applications

Western Blot (Recombinant protein)

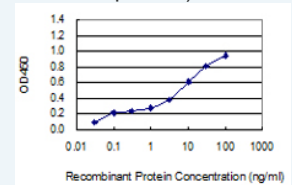
 [Protocol Download](#)

Sandwich ELISA (Recombinant protein)

Application Image

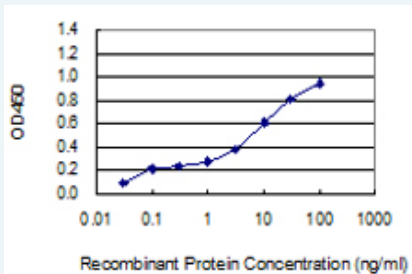
Western Blot (Recombinant protein)

Sandwich ELISA (Recombinant protein)




 [enlarge](#)

ELISA



Detection limit for recombinant GST tagged LCT is 0.03 ng/ml as a capture antibody.

 [Protocol Download](#)

ELISA

Gene Information

Entrez GeneID: [3938](#)

GeneBank [NM_002299](#)

Accession#:

Protein [NP_002290](#)

Accession#:

Gene Name: LCT

Gene Alias: LAC,LPH,LPH1

Gene lactase

Description:

Omim ID: [223100](#), [603202](#)

Gene Ontology: [Hyperlink](#)

Gene Summary: The protein encoded by this gene belongs to the family 1 of glycosyl hydrolases. The protein is integral to plasma membrane and has both phlorizin hydrolase activity and lactase activity. [provided by RefSeq]

Other Designations: lactase-glycosylceramidase,lactase-phlorizin hydrolase,lactase-phlorizin hydrolase-1

Gene Pathway

[Galactose metabolism](#)

Related Disease

[Abortion](#), [Spontaneous Acute Disease](#) [Alzheimer Disease](#) [Alzheimer disease](#)
[Atherosclerosis](#) [Atherosclerosis](#) [Bone Neoplasms](#) [Breast cancer](#) [Breast Neoplasms](#)
[Cardiovascular Diseases](#) [Cataract](#) [Celiac Disease](#) [Colitis](#), [Ulcerative](#) [Colon cancer](#)
[Colorectal Neoplasms](#) [Crohn Disease](#) [Crohn's disease](#) [Diabetes Complications](#)
[Diabetes Mellitus](#)

... see more