



# SZABO SCANDIC

Part of Europa Biosite

## Produktinformation



Forschungsprodukte & Biochemikalien



Zellkultur & Verbrauchsmaterial



Diagnostik & molekulare Diagnostik



Laborgeräte & Service

Weitere Information auf den folgenden Seiten!  
See the following pages for more information!



### Lieferung & Zahlungsart

siehe unsere [Liefer- und Versandbedingungen](#)

### Zuschläge

- Mindermengenzuschlag
- Trockeneiszuschlag
- Gefahrgutzuschlag
- Expressversand

### SZABO-SCANDIC HandelsgmbH

Quellenstraße 110, A-1100 Wien

T. +43(0)1 489 3961-0

F. +43(0)1 489 3961-7

[mail@szabo-scandic.com](mailto:mail@szabo-scandic.com)

[www.szabo-scandic.com](http://www.szabo-scandic.com)

[linkedin.com/company/szaboscandic](https://www.linkedin.com/company/szaboscandic) 

# LDHA MaxPab mouse polyclonal antibody (B01) MaxPab®

Catalog # : H00003939-B01

規格 : [ 50 uL ]

[List All](#)

## Specification

**Product Description:** Mouse polyclonal antibody raised against a full-length human LDHA protein.

**Immunogen:** LDHA (NP\_005557.1, 1 a.a. ~ 332 a.a) full-length human protein.

**Sequence:**  
 MATLKDQLIYNLLKEEQTPQNKITVVGAVGMACAISILMKDLADELALV  
 DVIEDKLGEMMDLQHGSLFLRTPKIVSGKDYNVTANSKLVITAGARQQE  
 GESRLNLVQRNVNIFKFIIPNVVKYSPNCKLLVSNPVDILTYVAWKISGFPK  
 NRVIGSGCNLDSARFRYLMGERLGVHPLSCHGWVLGEHGDSSVPVWS  
 GMNVAGVSLKTLHPDLGTDKDKQWKEVHKQVVESAYEVIKLGYSW  
 AIGLSVADLAESIMKNLRRVHPVSTMIKGLYGKDDVFLSVCILGQNGISD  
 LVKVTLTSEEEARLKKADTLWGIQKELQF

**Host:** Mouse

**Reactivity:** Human

**Quality Control Testing:** Antibody reactive against mammalian transfected lysate.

**Storage Buffer:** No additive

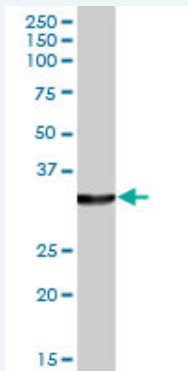
**Storage Instruction:** Store at -20°C or lower. Aliquot to avoid repeated freezing and thawing.

**Note:** For IHC and IF applications, antibody purification with Protein A will be needed prior to use.

**Datasheet:**  [Download](#)

## Applications

### Western Blot (Tissue lysate)



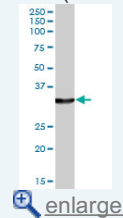
LDHA MaxPab polyclonal antibody. Western Blot analysis of LDHA expression in human liver.

 [Protocol Download](#)

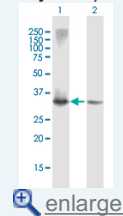
### Western Blot (Transfected lysate)

## Application Image

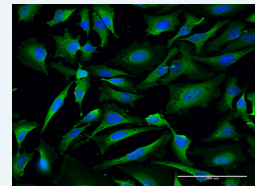
### Western Blot (Tissue lysate)

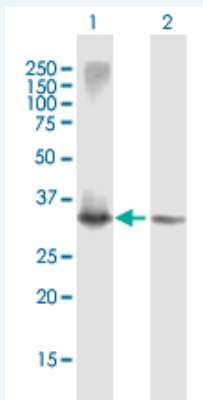


### Western Blot (Transfected lysate)



### Immunofluorescence



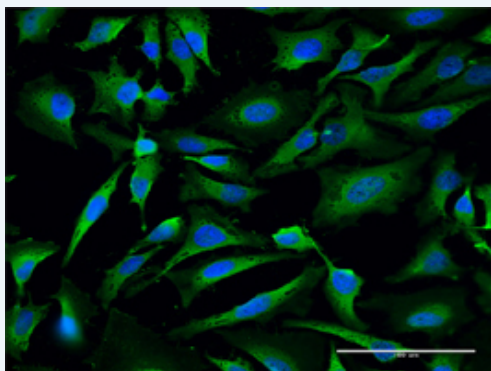


Western Blot analysis of LDHA expression in transfected 293T cell line ([H00003939-T01](#)) by LDHA MaxPab polyclonal antibody.

Lane 1: LDHA transfected lysate(36.52 KDa).  
Lane 2: Non-transfected lysate.

[Protocol Download](#)

### Immunofluorescence



[enlarge this image](#)

Immunofluorescence of [purified](#) MaxPab antibody to LDHA on HeLa cell. [antibody concentration 10 ug/ml]

[Protocol Download](#)

### Gene Information

**Entrez GeneID:** [3939](#)

**GeneBank** [NM\\_005566.1](#)  
**Accession#:**

**Protein** [NP\\_005557.1](#)  
**Accession#:**

**Gene Name:** LDHA

**Gene Alias:** LDH-M,LDH1,PIG19

**Gene** lactate dehydrogenase A  
**Description:**

**Omim ID:** [150000](#)

**Gene Ontology:** [Hyperlink](#)

**Gene Summary:** The protein encoded by this gene catalyzes the conversion of L-lactate and NAD to pyruvate and NADH in the final step of anaerobic glycolysis. The protein is found predominantly in muscle tissue and belongs to the lactate dehydrogenase family. Mutations in this gene have been linked to exertional myoglobinuria. Multiple transcript variants encoding different isoforms have been found for this gene. The human genome contains several non-transcribed pseudogenes of this gene. [provided by RefSeq]

**Other** L-lactate dehydrogenase A,proliferation-inducing gene 19

**Designations:**

**Gene Pathway**

[Cysteine and methionine metabolism](#) [Glycolysis / Gluconeogenesis](#) [Metabolic pathways](#)  
[Propanoate metabolism](#) [Pyruvate metabolism](#)

**Related Disease**

[Coronary Disease](#) [Genetic Predisposition to Disease](#) [Hypertension](#) [Narcolepsy](#)  
[Panic Disorder](#)

[服務條款](#) | [隱私權政策](#) | [著作及商標](#) | [網站地圖](#)

©2016 亞諾法生技股份有限公司 Abnova Corporation. 版權所有.