



# SZABO SCANDIC

Part of Europa Biosite

## Produktinformation



Forschungsprodukte & Biochemikalien



Zellkultur & Verbrauchsmaterial



Diagnostik & molekulare Diagnostik



Laborgeräte & Service

Weitere Information auf den folgenden Seiten!  
See the following pages for more information!



### Lieferung & Zahlungsart

siehe unsere [Liefer- und Versandbedingungen](#)

### Zuschläge

- Mindermengenzuschlag
- Trockeneiszuschlag
- Gefahrgutzuschlag
- Expressversand

### SZABO-SCANDIC HandelsgmbH

Quellenstraße 110, A-1100 Wien

T. +43(0)1 489 3961-0

F. +43(0)1 489 3961-7

[mail@szabo-scandic.com](mailto:mail@szabo-scandic.com)

[www.szabo-scandic.com](http://www.szabo-scandic.com)

[linkedin.com/company/szaboscandic](https://www.linkedin.com/company/szaboscandic) 

# LDHA purified MaxPab rabbit polyclonal antibody (D01P) MaxPab®

Catalog # : H00003939-D01P

規格 : [ 100 ug ]

List All

## Specification

**Product Description:** Rabbit polyclonal antibody raised against a full-length human LDHA protein.

**Immunogen:** LDHA (NP\_005557.1, 1 a.a. ~ 332 a.a) full-length human protein.

**Sequence:**  
 MATLKDQLIYNLLKEEQTPQNKITVVGAVGMACAISILMKDLADELALV  
 DVIEDKLGEMMDLQHGSLFLRTPKIVSGKDYNVTANSKLVITAGARQQE  
 GESRLNLVQRNVNIFKFIIPNVVKYSPNCKLLVSNPVDILTYVAWKISGFPK  
 NRVIGSGCNLDSARFRYLMGERLGVHPLSCHGWVLGEHGDSSVPVWS  
 GMNVAGVSLKTLHPDLGTDKDKQWKEVHKQVVEAYEVIKLGYSW  
 AIGLSVADLAESIMKNLRRVHPVSTMIKGLYGIKDDVFLSVPCILGQNGISD  
 LVKVTLTSEEEARLKKADTLWGIQKELQF

**Host:** Rabbit

**Reactivity:** Human

**Quality Control Testing:** Antibody reactive against mammalian transfected lysate.

**Storage Buffer:** In 1x PBS, pH 7.4

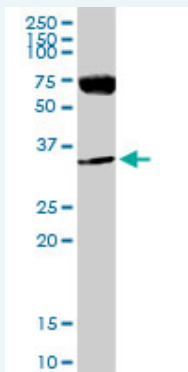
**Storage Instruction:** Store at -20°C or lower. Aliquot to avoid repeated freezing and thawing.

**MSDS:**  [Download](#)

**Datasheet:**  [Download](#)

## Applications

### Western Blot (Tissue lysate)



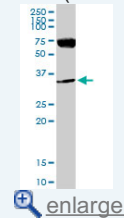
LDHA MaxPab rabbit polyclonal antibody. Western Blot analysis of LDHA expression in human kidney.

 [Protocol Download](#)

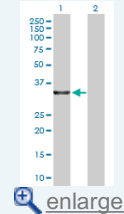
### Western Blot (Transfected lysate)

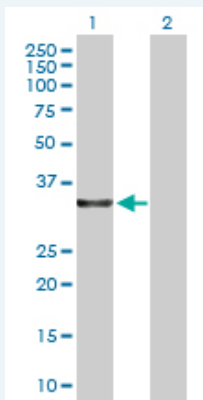
## Application Image

### Western Blot (Tissue lysate)



### Western Blot (Transfected lysate)





Western Blot analysis of LDHA expression in transfected 293T cell line ([H00003939-T01](#)) by LDHA MaxPab polyclonal antibody.

Lane 1: LDHA transfected lysate(36.70 KDa).  
Lane 2: Non-transfected lysate.

 [Protocol Download](#)

## Gene Information

**Entrez GeneID:** [3939](#)

**GeneBank Accession#:** [NM\\_005566.1](#)

**Protein Accession#:** [NP\\_005557.1](#)

**Gene Name:** LDHA

**Gene Alias:** LDH-M,LDH1,PIG19

**Gene Description:** lactate dehydrogenase A

**Omim ID:** [150000](#)

**Gene Ontology:** [Hyperlink](#)

**Gene Summary:** The protein encoded by this gene catalyzes the conversion of L-lactate and NAD to pyruvate and NADH in the final step of anaerobic glycolysis. The protein is found predominantly in muscle tissue and belongs to the lactate dehydrogenase family. Mutations in this gene have been linked to exertional myoglobinuria. Multiple transcript variants encoding different isoforms have been found for this gene. The human genome contains several non-transcribed pseudogenes of this gene. [provided by RefSeq]

**Other Designations:** L-lactate dehydrogenase A,proliferation-inducing gene 19

## Gene Pathway

[Cysteine and methionine metabolism](#) [Glycolysis / Gluconeogenesis](#) [Metabolic pathways](#) [Propanoate metabolism](#) [Pyruvate metabolism](#)

## Related Disease

[Coronary Disease](#) [Genetic Predisposition to Disease](#) [Hypertension](#) [Narcolepsy](#) [Panic Disorder](#)

