



SZABO SCANDIC

Part of Europa Biosite

Produktinformation



Forschungsprodukte & Biochemikalien



Zellkultur & Verbrauchsmaterial



Diagnostik & molekulare Diagnostik



Laborgeräte & Service

Weitere Information auf den folgenden Seiten!
See the following pages for more information!



Lieferung & Zahlungsart

siehe unsere [Liefer- und Versandbedingungen](#)

Zuschläge

- Mindermengenzuschlag
- Trockeneiszuschlag
- Gefahrgutzuschlag
- Expressversand

SZABO-SCANDIC HandelsgmbH

Quellenstraße 110, A-1100 Wien

T. +43(0)1 489 3961-0

F. +43(0)1 489 3961-7

mail@szabo-scandic.com

www.szabo-scandic.com

[linkedin.com/company/szaboscandic](https://www.linkedin.com/company/szaboscandic)

LDHB monoclonal antibody (M01), clone 2H6

Catalog # : H00003945-M01

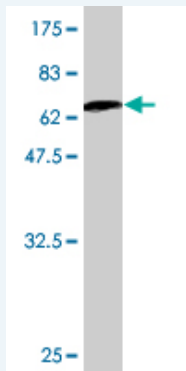
規格 : [100 ug]

[List All](#)

Specification

Product Description:	Mouse monoclonal antibody raised against a full length recombinant LDHB.
Immunogen:	LDHB (AAH02362.1, 1 a.a. ~ 334 a.a) full-length recombinant protein with GST tag. MW of the GST tag alone is 26 KDa.
Sequence:	MATLKEKLIAPVAEEEEATVPNNKITVVGVGQVGMACAISILGKSLADELALVDVLEDKLKGEMMDLQHGSFLQTPKIVADKDYSVTANSKIVVVTAGVRQQEGESRLNLVQRNMFVKFIIPQIVKYSPPDCIIVVSNPVDILTYVTWKLSGLPKHRVIGSGCNLDSARFRYLMAEKLGIHPSSCHGWILGEHGDSSVAVWSGVNVAGVSLQELNPEMGTDNSENWKEVHKMVSAYEVIKLKGVTNWAIGLSVADLIESMLKNLSRIHPVSTMVKGMYGIENEVFLSLPCILNARGLTSDINQKLDDEVAQLKKSADTLWDIQKDLKDL
Host:	Mouse
Reactivity:	Human
Isotype:	IgG1 kappa

Quality Control Testing: Antibody Reactive Against Recombinant Protein.



Western Blot detection against Immunogen (62.48 KDa) .

Storage Buffer: In 1x PBS, pH 7.4

Storage Instruction: Store at -20°C or lower. Aliquot to avoid repeated freezing and thawing.

MSDS: [Download](#)

Datasheet: [Download](#)

Publication Reference

- [Membrane Type 1-Matrix Metalloproteinase/Akt Signaling Axis Modulates TNF- \$\alpha\$ -Induced Procoagulant Activity and Apoptosis in Endothelial Cells.](#)
Ohkawara H, Ishibashi T, Sugimoto K, Ikeda K, Ogawa K, Takeishi Y. PLoS One. 2014 Aug 27;9(8):e105697. doi: 10.1371/journal.pone.0105697. eCollection 2014.
- [Pilot application of iTRAQ to the retinal disease Macular Telangiectasia.](#)
Len AC, Powner MB, Zhu L, Hageman GS, Song X, Fruttiger M, Gillies MC. J Proteome

Application Image

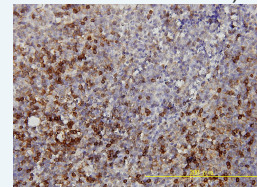
Western Blot (Cell lysate)



[enlarge](#)

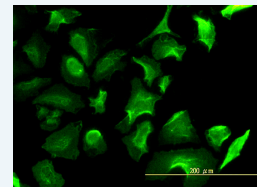
Western Blot (Recombinant protein)

Immunohistochemistry (Formalin/PFA-fixed paraffin-embedded sections)



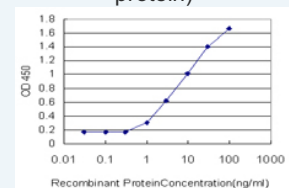
[enlarge](#)

Immunofluorescence



[enlarge](#)

Sandwich ELISA (Recombinant protein)



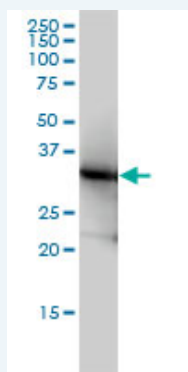
[enlarge](#)

ELISA

3. [Quantitative Proteomics Analysis Reveals BAG3 as a Potential Target to Suppress SARS-CoV Replication.](#)
Zhang L, Zhang ZP, Zhang XE, Lin FS, Ge F. J Virol. 2010 Apr 14. [Epub ahead of print]

Applications

Western Blot (Cell lysate)



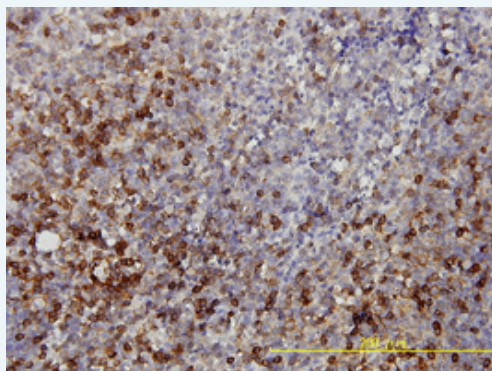
LDHB monoclonal antibody (M01), clone 2H6 Western Blot analysis of LDHB expression in HeLa (Cat # L013V1).

 [Protocol Download](#)

Western Blot (Recombinant protein)

 [Protocol Download](#)

Immunohistochemistry (Formalin/PFA-fixed paraffin-embedded sections)

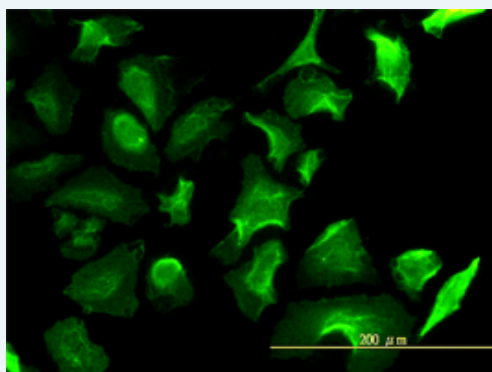



 [enlarge this image](#)

Immunoperoxidase of monoclonal antibody to LDHB on formalin-fixed paraffin-embedded human tonsil tissue. [antibody concentration 5 ug/ml]

 [Protocol Download](#)

Immunofluorescence

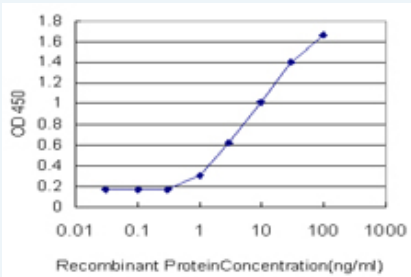


 [enlarge this image](#)


Immunofluorescence of monoclonal antibody to LDHB on HeLa cell. [antibody concentration 10 ug/ml]

 [Protocol Download](#)

Sandwich ELISA (Recombinant protein)



Detection limit for recombinant GST tagged LDHB is approximately 1ng/ml as a capture antibody.

 [Protocol Download](#)

ELISA

Gene Information

Entrez GeneID: [3945](#)

GeneBank [BC002362](#)

Accession#:

Protein [AAH02362.1](#)

Accession#:

Gene Name: LDHB

Gene Alias: LDH-H,TRG-5

Gene Description: lactate dehydrogenase B

Omim ID: [150100](#)

Gene Ontology: [Hyperlink](#)

Other Designations: L-lactate dehydrogenase
B,OTTHUMP00000165228,OTTHUMP00000165229

Gene Pathway

[Cysteine and methionine metabolism](#) [Glycolysis / Gluconeogenesis](#) [Metabolic pathways](#)
[Propanoate metabolism](#) [Pyruvate metabolism](#)

Related Disease

[Genetic Predisposition to Disease](#) [Panic Disorder](#)