



SZABO SCANDIC

Part of Europa Biosite

Produktinformation



Forschungsprodukte & Biochemikalien



Zellkultur & Verbrauchsmaterial



Diagnostik & molekulare Diagnostik



Laborgeräte & Service

Weitere Information auf den folgenden Seiten!
See the following pages for more information!



Lieferung & Zahlungsart

siehe unsere [Liefer- und Versandbedingungen](#)

Zuschläge

- Mindermengenzuschlag
- Trockeneiszuschlag
- Gefahrgutzuschlag
- Expressversand

SZABO-SCANDIC HandelsgmbH

Quellenstraße 110, A-1100 Wien

T. +43(0)1 489 3961-0

F. +43(0)1 489 3961-7

mail@szabo-scandic.com

www.szabo-scandic.com

[linkedin.com/company/szaboscandic](https://www.linkedin.com/company/szaboscandic) 

LDHB monoclonal antibody (M02), clone 2F11

Catalog # : H00003945-M02

規格 : [100 ug]

[List All](#)

Specification

Product Description: Mouse monoclonal antibody raised against a full-length recombinant LDHB.

Immunogen: LDHB (AAH02362.1, 1 a.a. ~ 334 a.a) full-length recombinant protein with GST tag. MW of the GST tag alone is 26 KDa.

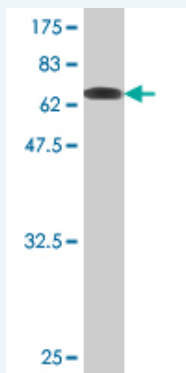
Sequence:
 MATLKEKLIAPVAEEEEATVPNNKITVVGVGQVGMACAISILGKSLADELAL
 VDVLEDKLGEMMDLQHGSLFLQTPKIVADKDYSVTANSKIVVWTAGVR
 QQEGESRLNLVQRNMNVFKFIIPQIVKYSPDCIIVSNPVDILTYVTWKL
 LSG LPKHRVIGSGCNLDSARFRYLMAEKLGIHPSSCHGWILGEHGDSSVAVW
 SGVNVAGVSLQELNPEMGTDNSENWKEVHKMVSAYEVIKLKGVTN
 WAIGLSVADLIESMLKNLSRIHPVSTMVKGMYGIENEVFLSLPCILNARGLT
 SDINQKLKDDEVAQLKKSADTLWDIQDKLDL

Host: Mouse

Reactivity: Human

Isotype: IgG1 Kappa

Quality Control Testing: Antibody Reactive Against Recombinant Protein.



Western Blot detection against Immunogen (62.48 KDa) .

Storage Buffer: In 1x PBS, pH 7.4

Storage Instruction: Store at -20°C or lower. Aliquot to avoid repeated freezing and thawing.

MSDS: [Download](#)

Datasheet: [Download](#)

Applications

Western Blot (Recombinant protein)

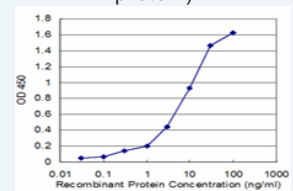
[Protocol Download](#)

Sandwich ELISA (Recombinant protein)

Application Image

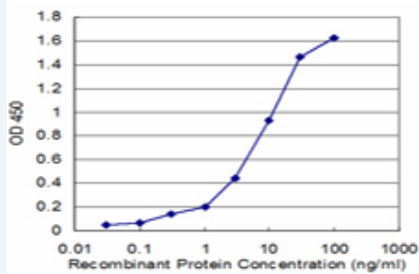
Western Blot (Recombinant protein)

Sandwich ELISA (Recombinant protein)



[enlarge](#)

ELISA



Detection limit for recombinant GST tagged LDHB is approximately 0.3ng/ml as a capture antibody.

 [Protocol Download](#)

ELISA

Gene Information

Entrez GeneID: [3945](#)

GeneBank [BC002362](#)

Accession#:

Protein [AAH02362.1](#)

Accession#:

Gene Name: LDHB

Gene Alias: LDH-H,TRG-5

Gene Description: lactate dehydrogenase B

Omim ID: [150100](#)

Gene Ontology: [Hyperlink](#)

Other Designations: L-lactate dehydrogenase

Designations: B,OTTHUMP00000165228,OTTHUMP00000165229

Gene Pathway

[Cysteine and methionine metabolism](#) [Glycolysis / Gluconeogenesis](#) [Metabolic pathways](#)
[Propanoate metabolism](#) [Pyruvate metabolism](#)

Related Disease

[Genetic Predisposition to Disease](#) [Panic Disorder](#)